

PsExec (Execute Remote Process) Action

PsExec allows you to execute a program on a remote computer. It is a more flexible alternative to the [WMI Run Process](#) action. PsExec can optionally create an interactive program on a user's desktop, can log output from the target program, and/or can obtain a return code.

Remote Tab

See the [PsTools Common Options](#) topic.

The screenshot shows the 'PsExec (Execute Remote Program)' dialog box with the 'Program' tab selected. The 'Program file' field contains 'C:\Program Files\Application\Application.exe'. The 'Options' section has 'Parameters' set to '-s -l'. The 'Exit code must be' section is set to 'less than or equal to' with a value of '0'. The 'Wait for completion', 'Capture standard output', and 'Capture standard error' checkboxes are all checked. The 'Copying program file' section has four radio button options: 'Do not copy the program to the remote computer', 'Copy the program to the remote computer if not found (-c)', 'Copy the program to the remote computer if newer (-cv)', and 'Force copy the program to the remote computer (-cf)'. The 'OK', 'Cancel', and 'Help' buttons are at the bottom.

PsExec (Execute Remote Program)

General Runtime Remote **Program** Process Options

Program file

C:\Program Files\Application\Application.exe

Options

Parameters : -s -l

Start in :

☒ Exit code must be less than or equal to 0

☒ Wait for completion

☒ Capture standard output

☒ Capture standard error (includes psexec status information)

Copying program file

☐ Do not copy the program to the remote computer

☒ Copy the program to the remote computer if not found (-c)

☐ Copy the program to the remote computer if newer (-cv)

☐ Force copy the program to the remote computer (-cf)

OK Cancel Help

Program File

Enter the path to the target executable (on the remote computer.)

Parameters

Enter any command line parameters for the target executable.

Start In

Enter the directory (on the remote computer) where you would like the process to start. Leave blank to use the directory which contains the program file.

Exit code must be

Specify a range of exit codes for the action to succeed. This option is not available if "Wait For Completion" is enabled.

This option also includes the exit codes from PsExec itself. If PsExec fails to start the process, then it will return a PsExec exit code rather than an exit code from the process.

Wait For Completion

Enable this option for PsExec to not exit before the remote program has completed. If it is not enabled, the action will exit as soon as the remote program is running.

"Wait For Completion" must be enabled in order to log output from the remote action, or in order to receive exit codes from the remote program.

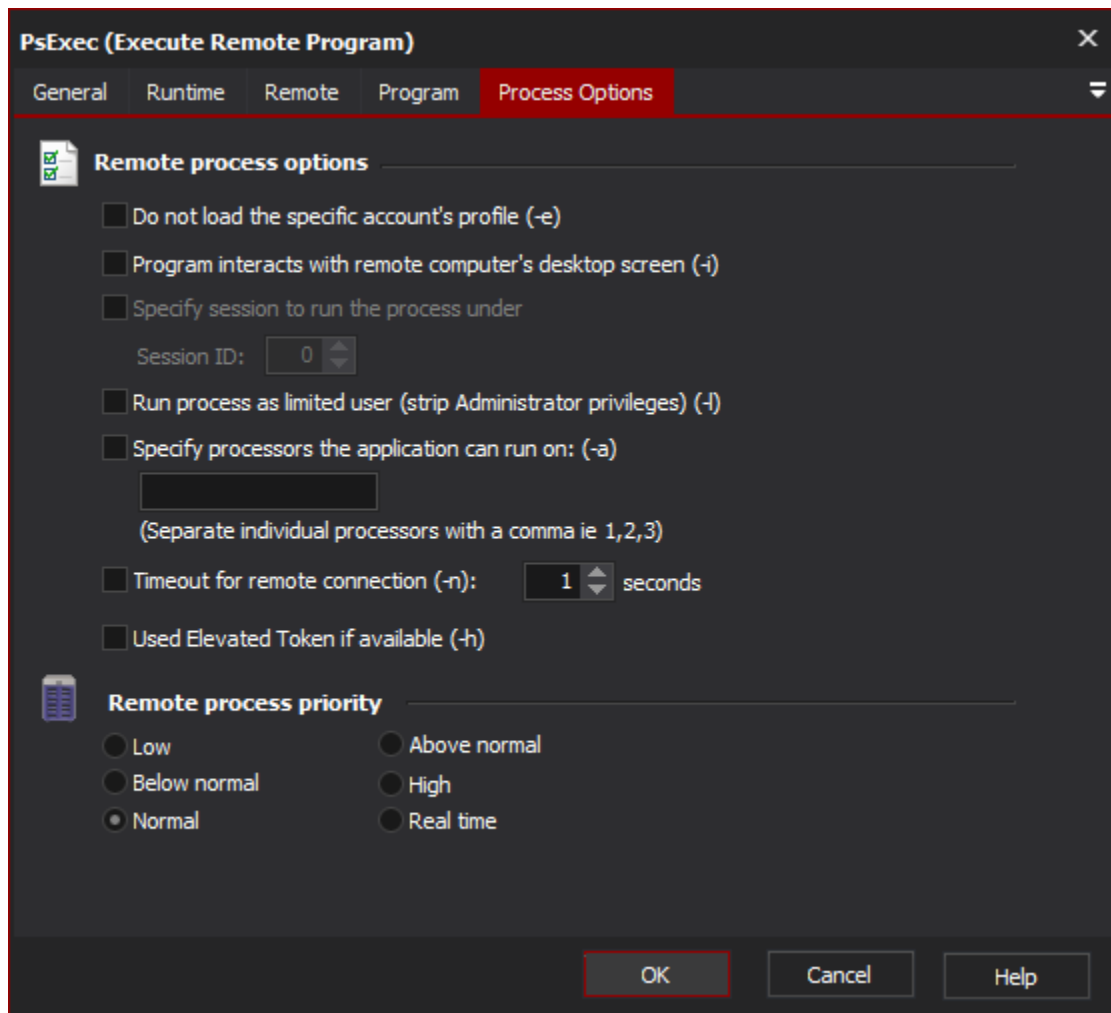
Capture standard output / Standard error

Enable one or both of these options in order to capture output from the remote program.

Because of the way in which PsExec outputs information, no "live" information is available before the program has ended. Also, information from Standard Output and Standard Error are not buffered in a chronological fashion - all of standard output is displayed in the log, followed by all of standard error (which includes PsExec's status output.)

Copying Program File

These options allow the target executable to be copied to the remote computer if it does not already exist. The program must exist in the local application PATH, or alternatively at the local pathname specified for "Program".



Load the specific account's profile

Enable this option to load account profile information (environment variables, etc.) before executing the program.

Program interacts with remote computers' desktop screen

Enable this option to make the remote application show up on the user's desktop. Otherwise, it will run invisibly in the background. Some graphical application require this option to be enabled in order to work properly.

Specify session to run the process under

When using the "Program interacts with remote computers' desktop screen" option, use this option to specify the ID of the interactive session to run the process within.

Run process as limited user

If this option is enabled, then even if the account specified on the "Remote" tab has Administrator privileges, the remote application will not.

Specify processors the application can run on

Use this option to specify Processor Affinity for the remote program. List processors by number, and separate individual processors with a comma.

Timeout for remote connection

Specify a timeout length for network communications.

Remote Process Priority

Specify a priority level for the target process. Specifying above Normal process priority may make the remote system unresponsive, and Realtime priority has the potential to crash the remote system completely.