

Spell Checking Action

[Automise Professional Edition]

The Spell Check action allows you to check a text file for any spelling errors (ie. unknown words).

Source

The screenshot shows the 'Spelling Check' dialog box with the 'Source' tab selected. The dialog has a title bar with a close button (X) and a tab bar with 'General', 'Runtime', 'Source' (selected), 'Options', and 'Dictionaries'. Below the tab bar, there is a 'Source' label with a folder icon and a green 'S' icon. Three radio buttons are present: 'Text file' (unselected), 'FileSet' (selected), and 'Text' (unselected). The 'Text file' option has a text input field with a folder icon. The 'FileSet' option has a dropdown menu showing 'SourceFiles'. The 'Text' option has a large text area with a scroll bar and the text 'Variables will be expanded' above it. At the bottom, there are 'OK', 'Cancel', and 'Help' buttons.

Source

Select the source to check spelling of:

Text File

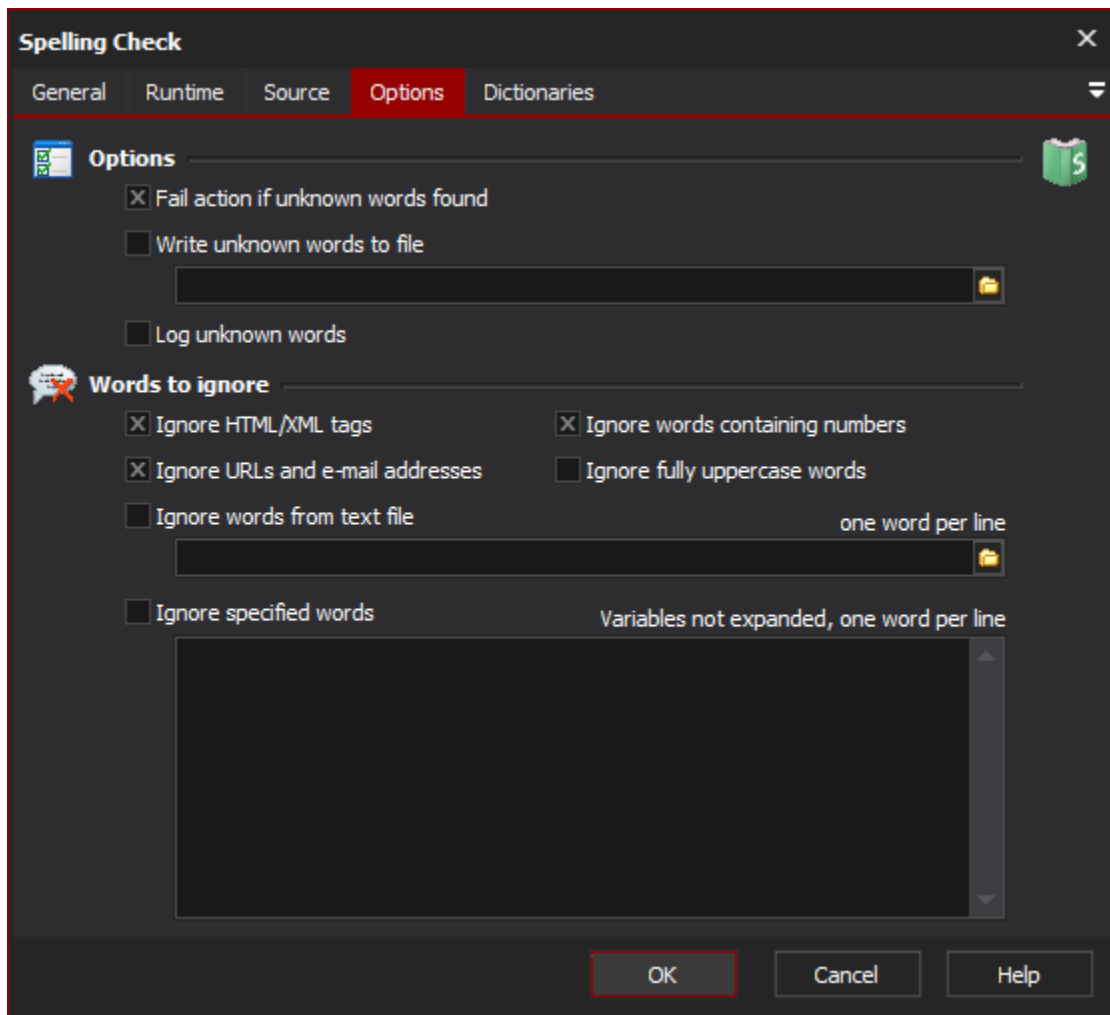
Specify a text file

FileSet

Specify a [FileSet](#) to use. Make sure that only text files are included in the FileSet

Text

Enter text to check. You may use variables here which will be expanded first.



Options

Fail if unknown words found

Setting this will fail the action if one or more words are unknown

Write unknown words to file

Any unique unknown words found will be appended to the specified text file. The file will be created if it doesn't exist.

Log unknown words

Each unique unknown word will be written to the log

Words to Ignore

Ignore HTML/XML tags

This will ignore words inside "<" ">" tags. eg. <speeling>error</speeling> will only test the word "error" and ignore "speeling"

Ignore words containing numbers

This will ignore words like "3ware"

Ignore URLs and e-mail addresses

This ignores words that start with an internet protocol like "http://" and also words that contain the @ symbol.

Ignore fully uppercase words

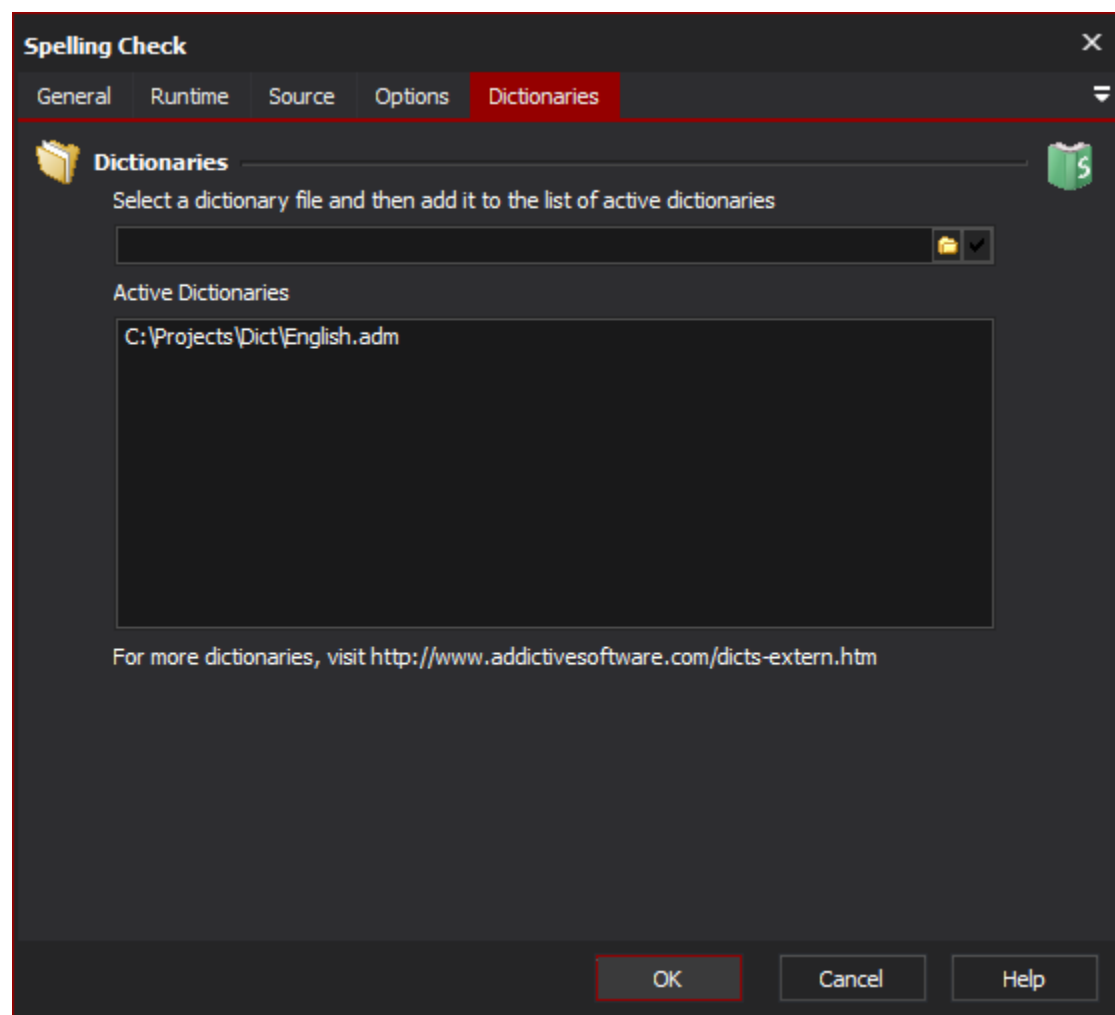
This will ignore words like "SHOUT"

Ignore words from text file

Each line of the file is interpreted as a word and will be ignored

Ignore specified words

Dictionaries



Dictionaries

Active dictionaries

You may specify other Addict dictionaries to use. See here for other dictionaries:

Ignore Specified words - add other words to ignore, one line per word