


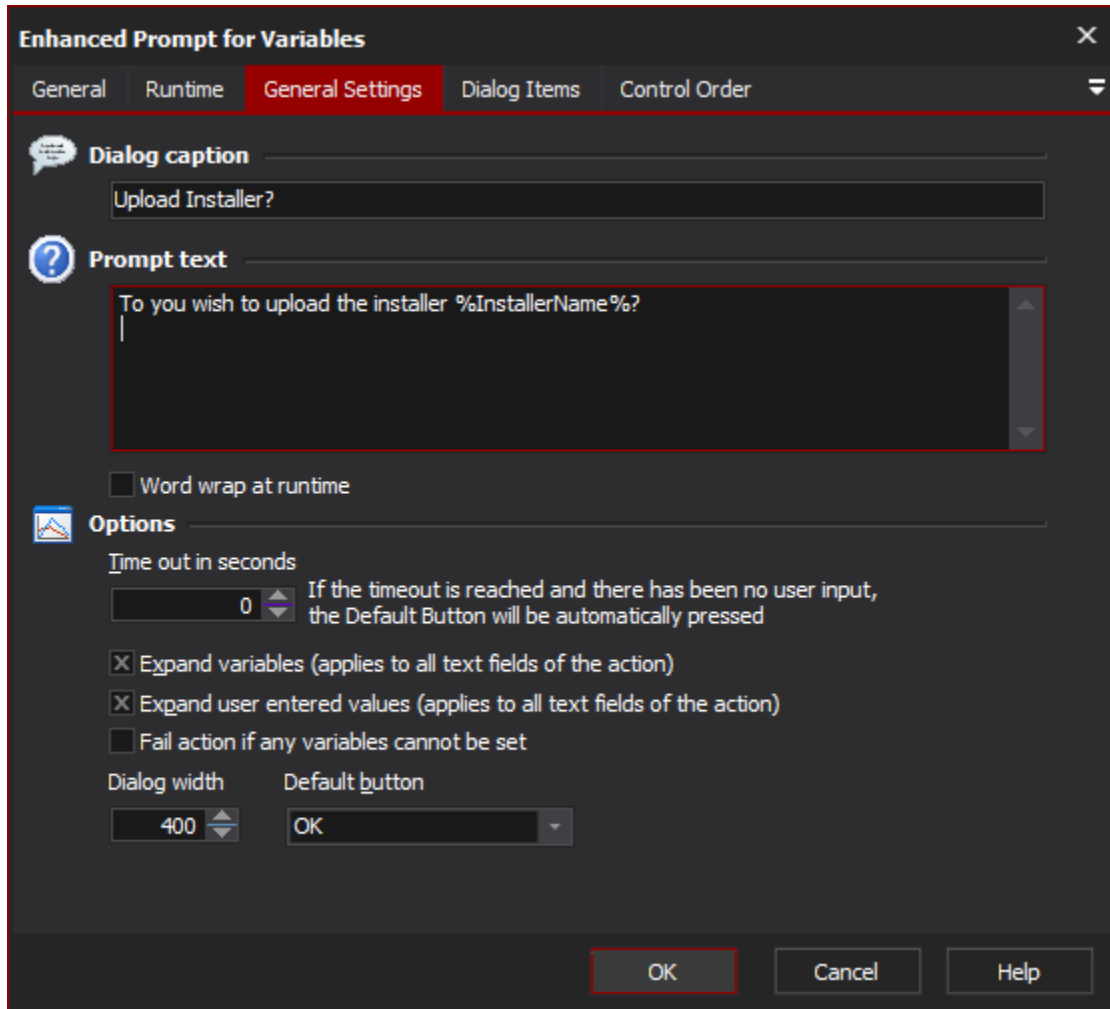
Enhanced Prompt For Variables Action

This action (kindly donated by Peter Thörnqvist) is an enhanced version of the [here](#).

 By default, interactive actions are not available from the [Async Action Groups](#).

The general settings lets you customise the dialog appearance.

General Settings



The screenshot shows the 'Enhanced Prompt for Variables' dialog box with the 'General Settings' tab selected. The dialog has a title bar with a close button (X) and a tab bar with four tabs: 'General', 'Runtime', 'General Settings' (active), 'Dialog Items', and 'Control Order'. The 'General Settings' tab contains the following fields and options:

- Dialog caption:** A text field containing 'Upload Installer?'.
- Prompt text:** A large text area containing 'To you wish to upload the installer %InstallerName%?'.
- Word wrap at runtime:** A checkbox that is currently unchecked.
- Options:** A section with several settings:
 - Time out in seconds:** A numeric field set to '0'. A tooltip explains: 'If the timeout is reached and there has been no user input, the Default Button will be automatically pressed'.
 - Expand variables (applies to all text fields of the action):** A checked checkbox.
 - Expand user entered values (applies to all text fields of the action):** A checked checkbox.
 - Fail action if any variables cannot be set:** An unchecked checkbox.
 - Dialog width:** A numeric field set to '400'.
 - Default button:** A dropdown menu set to 'OK'.

At the bottom of the dialog are three buttons: 'OK', 'Cancel', and 'Help'.

Dialog Caption

The text to appear in the dialog header.

Prompt Text

The text to appear at the top of the dialog (optional).

Word Wrap at Runtime

Set this to automatically wrap the prompt text according to the width of the dialog.

Options

Time Out In Seconds

The dialog will automatically close if the user hasn't interacted with the dialog for the specified time

Expand Variables

Check this to replace variables with their value in the dialog

Expand user entered values

Fail action if any variables cannot be set

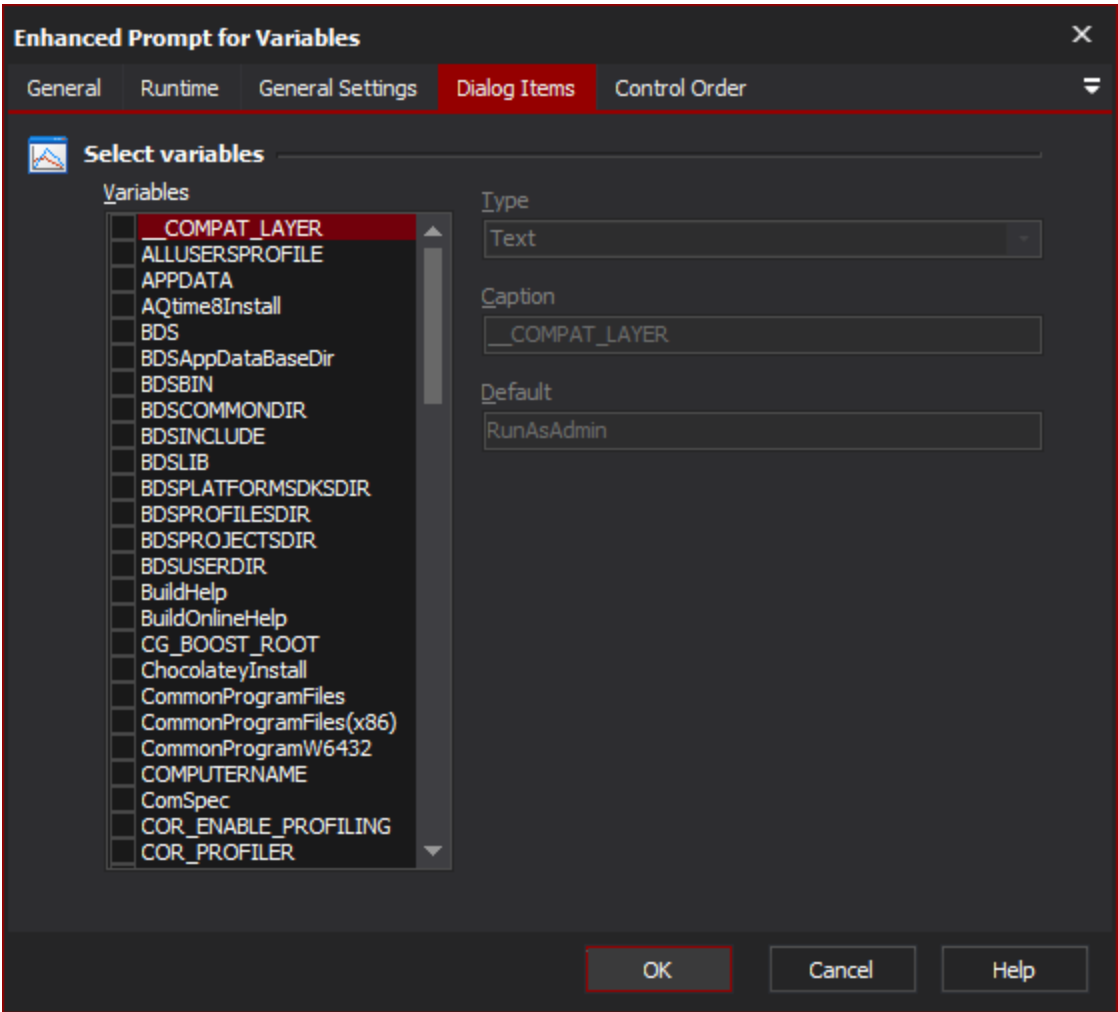
Dialog Width

Set the width of the dialog at runtime. You may want to adjust this to a larger width to accommodate large pathnames or other options that require a lot of horizontal space. Be aware that the size of the dialog isn't too big for your user's monitors.

Default Button

This used for the timeout to choose a suitable action when the timeout is reached

Dialog Items



Select variables

Variables

This list allows you to select which variables should be added to the dialog at runtime. Selecting a variable that is checked allows you to configuring the settings for that variable.

Type

Choose the type of the variable (this determines the control used at runtime).

Caption

The name of the control as it will appear on the dialog at runtime

Default

The default value of the control

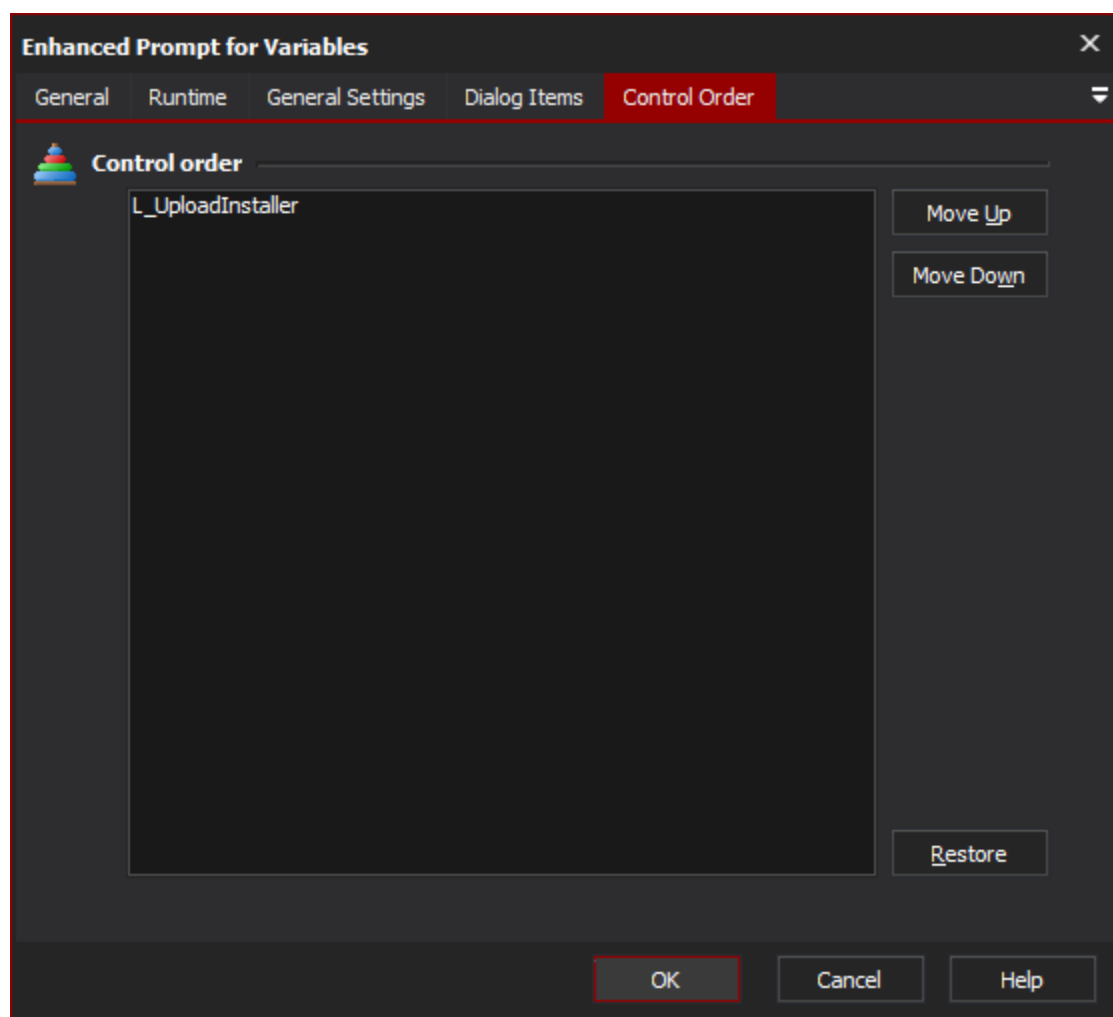
Values can have initial defaults (which can be variable values or fixed values.)

For "Check List" type prompts, specify default values as a comma-delimited list of values to enable at runtime.

Control Order

Control order

This tab allows you to set the order of the various controls as they will appear on the runtime dialog



This is the prompt form at Runtime, showing 4 variables. Clicking on the Cancel button would cause the action to fail and stop the run. Also notice that a timeout has been set and is currently at 23 seconds.