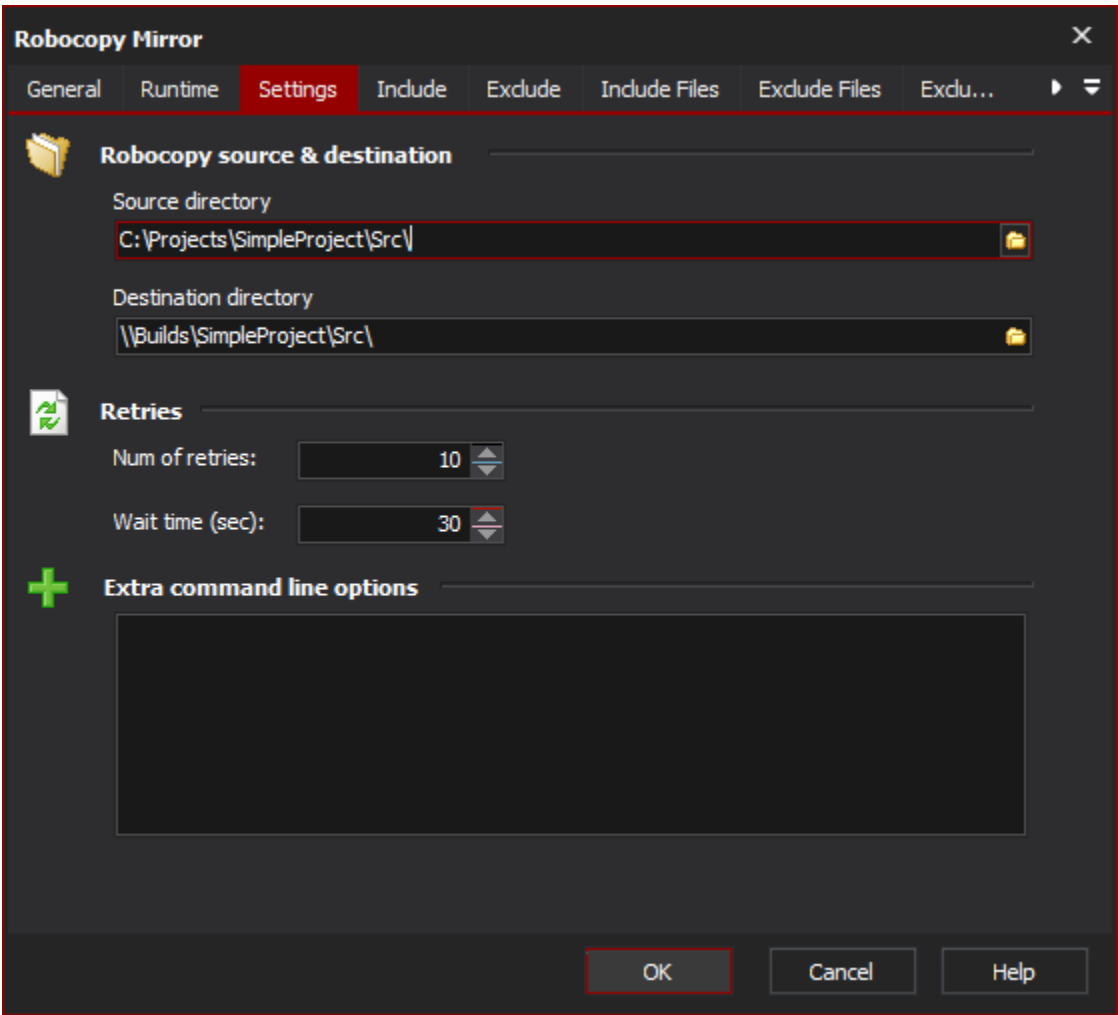


RoboCopy Action

On this page:

Settings

The settings page allows you to set the basic details of the Robocopy operation including the source and destination for the operation.



Robocopy Source & Destination

Source Directory

This is the directory that contains the files that you want to copy. Do not specify a file or file mask here.

Destination Directory

This is the directory that will be the destination for the copied files.

Retries

Num of Retries

This allows you to specify the number of times to retry failed copied attempts.

Wait Time (sec)

This allows you to specify the number of seconds between retries of failed copy attempts.

Extra Command Line Options

Specify any additional command line arguments to pass to Robocopy.

Options

Options

Include subdirectories

List files without copying, deleting or applying a time stamp to any files

Wait for share names to be defined on a "Network Name Not Found" error

Insert delay after each 64k chunk of file data is copied

Copy files in restart mode

Copy flags

Data

Attributes

Timestamps

Security

Ownership information

Auditing information

Set specified attributes in copy files

Read only

System

Not content indexed

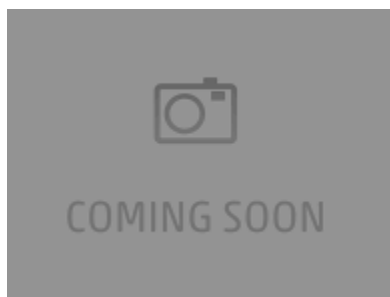
Archived

Hidden

Temporary

Include

The Include page allows you to specify the conditions which files must meet to be included in the Robocopy operation.



Include files with Attributes

Only Include files with the following attributes

Selectively copy files based on the attributes of the source files.

Read only

System

Not content indexed

Archived

Hidden

Temporary

Encrypted

Compressed

Offline

Other Inclusions

Only include files with archive bit set and reset archive bit on copied files

Only source files that have the archive bit set will be copied. Once the copy has completed the archive bit will be reset on these files.

Include files tagged as "Same"

Files are deemed to be same when the file exists in both the source and the destination and are identical in contents, size, time stamp and attributes.

Include files tagged as "Tweaked"


Files are deemed to be tweaked when the file exists in both the source and the destination, containing identical in contents, size, time stamp but differing attributes.

Exclude

The Exclude page allows you to specify conditions to exclude files from the Robocopy operation.

Robocopy [X]


General Runtime Settings Options Include **Exclude** Include Files Exclude Files ▶ ▾

 **Exclude files with attributes**

☐ Read only ☐ System ☐ Not content indexed

☐ Archive ☐ Hidden ☐ Temporary

☐ Encrypted ☐ Compressed ☐ Offline

 **Other Exclusions**

☐ Exclude junction points ☐ Exclude files tagged as "Older"

☐ Exclude files tagged as "Changed" ☐ Exclude files and directories tagged as "Extra"

☐ Exclude files tagged as "Newer" ☐ Exclude files and directories tagged as "Lonely"

☐ Exclude files larger than: 1 bytes

☐ Exclude files smaller than: 1 bytes

☐ Exclude with last modified date older than: ☐ 1 days ☒ 30/12/1899

☐ Exclude with last modified date newer than: ☐ 1 days ☒ 30/12/1899

☐ Exclude with last access date older than: ☐ 1 days ☒ 30/12/1899

☐ Exclude with last access date newer than: ☐ 1 days ☒ 30/12/1899

OK Cancel Help

Exclude files with attributes

Exclude files from the Robocopy operation which have the selected attributes.

Read only

System

Not content indexed

Archived

Hidden

Temporary

Encrypted

Compressed

Offline

Other exclusions

Exclude Junction Points

Self explanatory.

Exclude files tagged as "Older"

Exclude files that exist in both the source and destination where the source file is older than the destination file.

Exclude files tagged as "Changed"

Exclude files that exist in both the source and destination where the timestamps match but the file sizes are different.

Exclude files tagged as "Extra"

Exclude files that exist in the destination but do not exist in the source directory.

Exclude files tagged as "Newer"

Exclude files that exist in both the source and destination where the source file is newer than the destination file.

Exclude files tagged as "Lonely"

Exclude files that exist in the source but not in the destination.

Exclude files larger than X bytes

Self explanatory.

Exclude files smaller than X bytes

Self explanatory.

Exclude with Last Modified Date older than

Self explanatory.

Exclude with Last Modified Date newer than

Self explanatory.

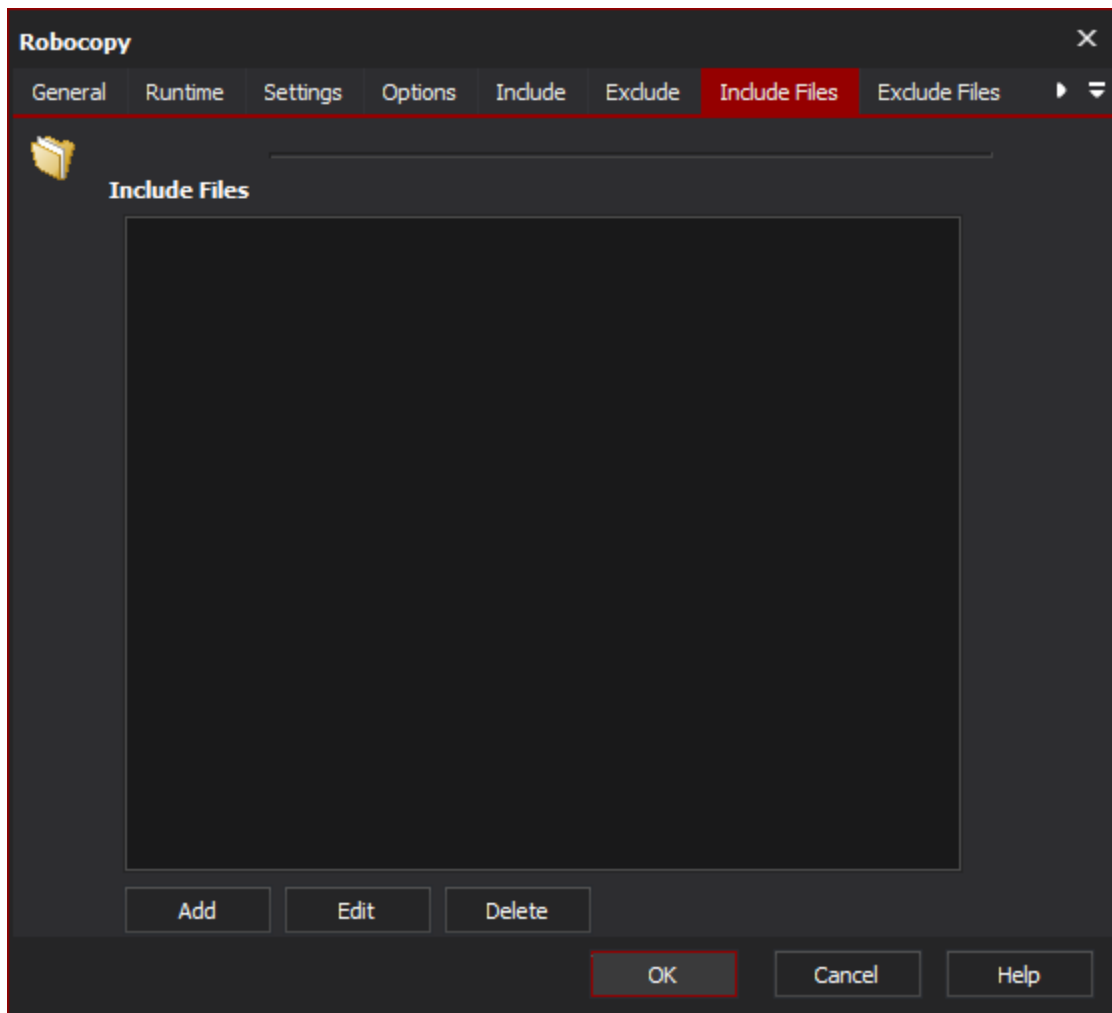
Exclude with Last Access Date older than

Self explanatory.

Exclude with Last Access Date newer than

Self explanatory.

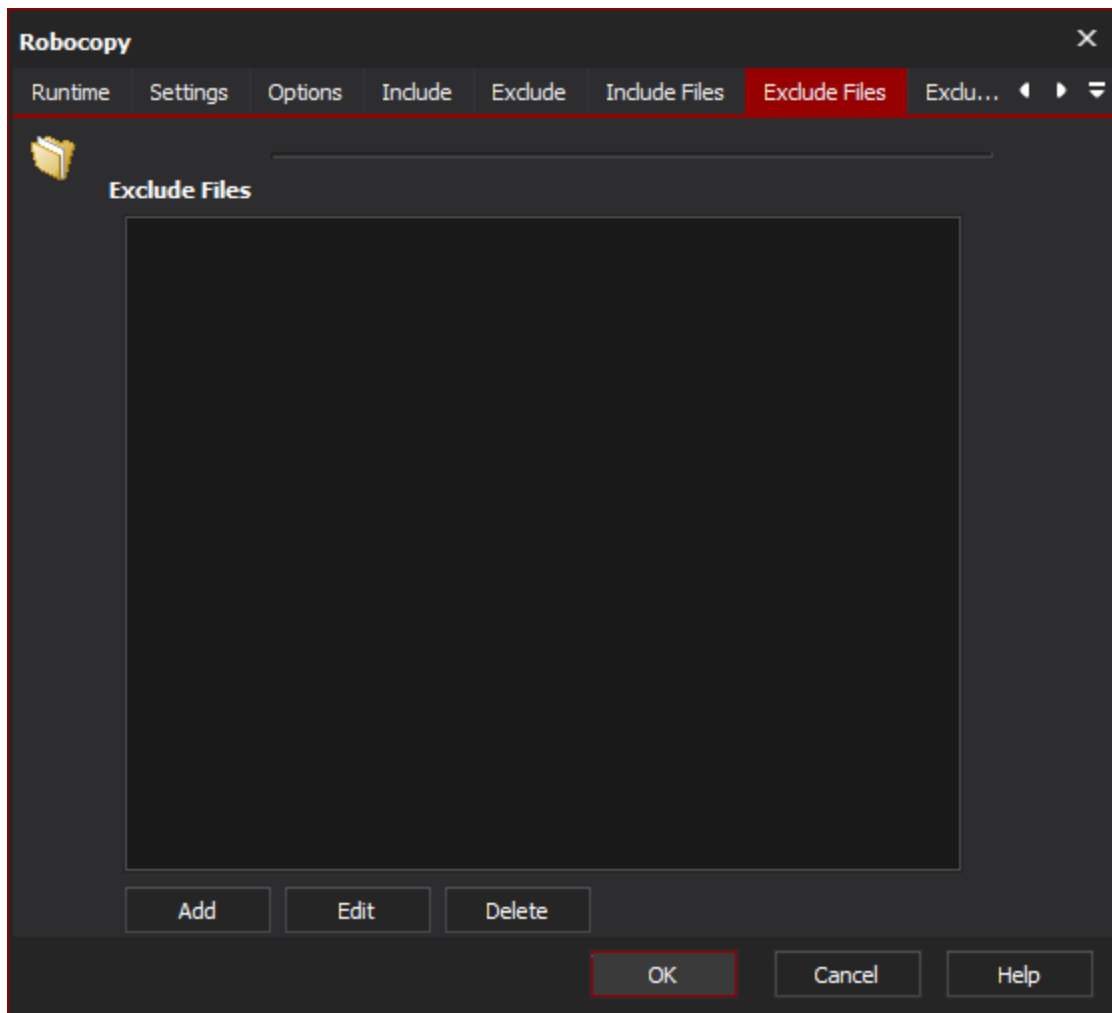
Include files



The include files page allows you to specify file names and file masks to exclude files from the Robocopy operation.

Include Files

Exclude files

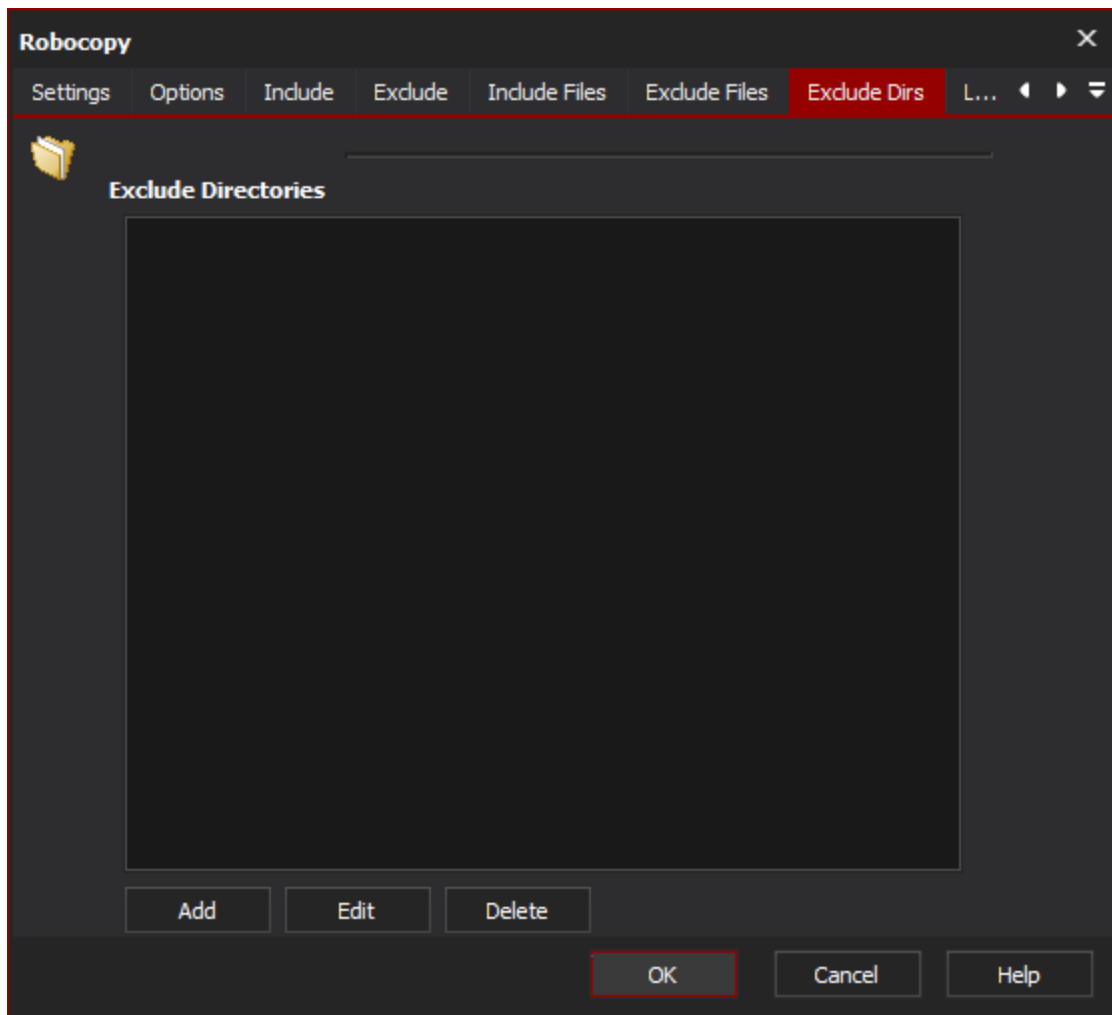


The exclude files page allows you to specify file names and file masks to exclude files from the Robocopy operation.

Exclude Files

Exclude dirs

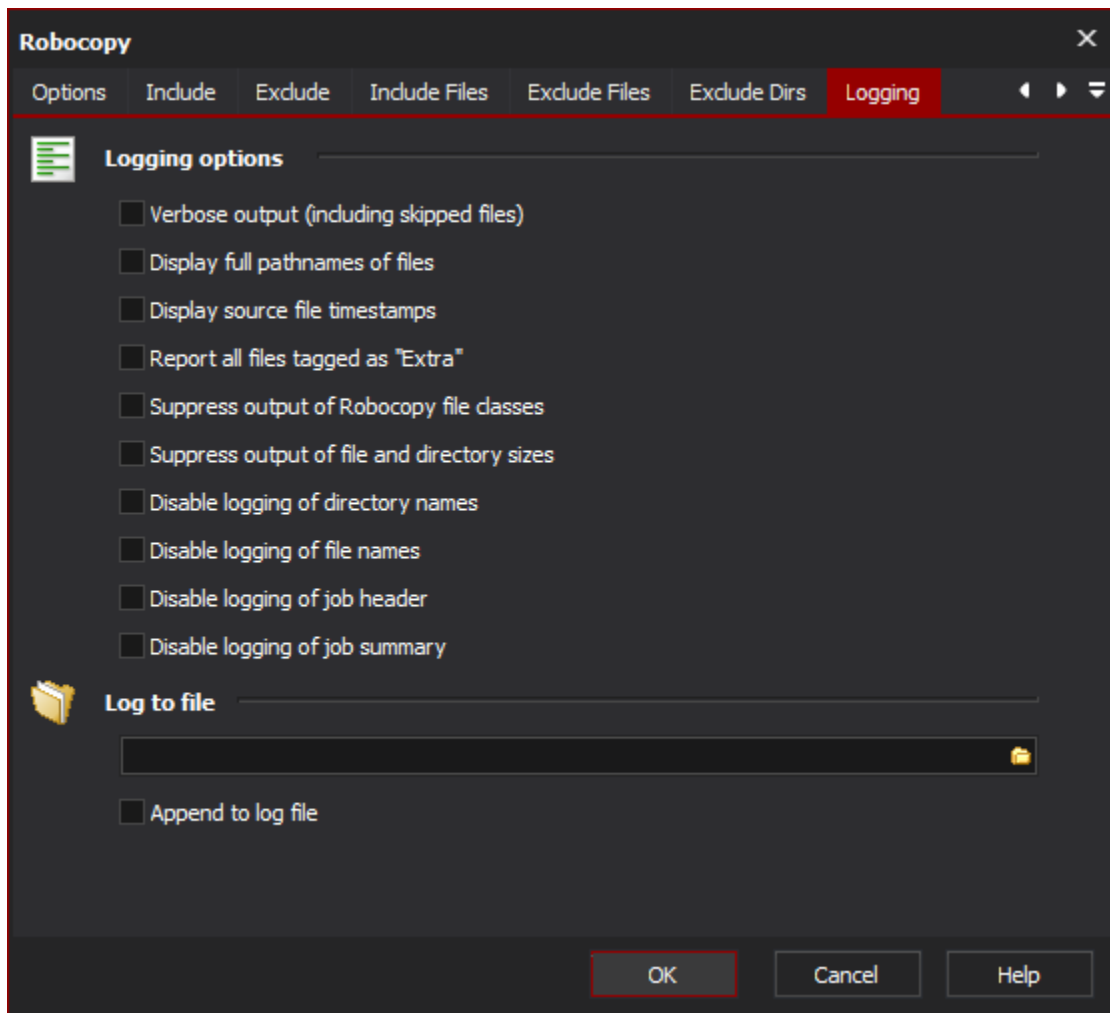
The exclude dirs page allows you to specify directories to be excluded from the Robocopy operation.



Exclude directories

Logging

The logging page provides options to customise the output from Robocopy.



Logging Options

Verbose Output

Increase the verbosity of the log output, this will include the logging of skipped files.

Display full pathnames of files

Self explanatory.

Display source file timestamps

Self explanatory.

Report all files tagged as "Extra"

Enable reporting of extra files. Extra files are files which exist the destination directory but do not exist in the source directory.

Suppress output of Robocopy file classes

Disable reporting of Robocopy file classes. Robocopy file classes are Lonely, Tweaked, Same, Changed, Newer, Older, Extra and Mismatched.

Suppress output of file and directory sizes

Self explanatory.

Disable logging of directory names

Self explanatory.

Disable logging of file names

Self explanatory.

Disable logging of job header

Self explanatory.

Disable logging of job summary

Self explanatory.

Log To File

Provide a file path to log Robocopy output to a file as well as a the Automise log.

Append to log file

Append to the file specified rather than overwriting it each time the action is run.