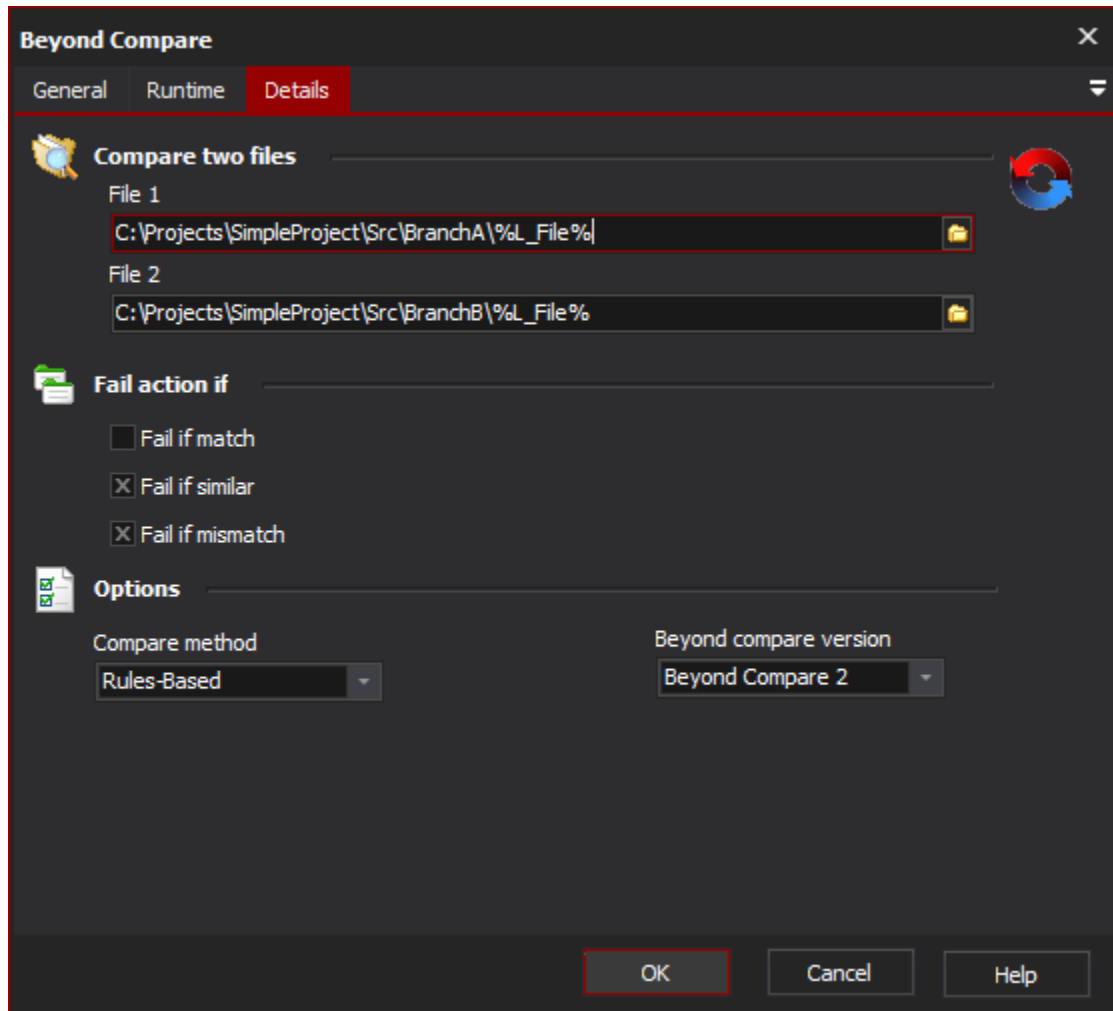


# Beyond Compare Action

The Beyond Compare uses the QuickCompare mode of to compare the contents of two files.

On this page:

## Details



## Compare Two Files

Specify the path to each file.

### File 1

The first file in the comparison. In the GUI this would appear on the left.

### File 2

The second file in the comparison. In the GUI this would appear on the right.

## Fail Action If

### Fail if match

Specify this option if the action should fail if the two files match each other.

**Fail if similar**

Specify this option if the action should fail if the two files are similar to each other. The meaning of "similar" is determined by the machines beyond compare options set globally (or for the specific user).

**Fail if mismatch**

Specify this option if the action should fail if the two files are not the same.

**Options**

The action can be set to fail on any combination of matching, similar and mismatched files.

**Compare method**

Comparisons can be made based on rules-based, size, CRC or full binary comparison.

**Beyond compare version**

The version of beyond compare to use to perform this action.