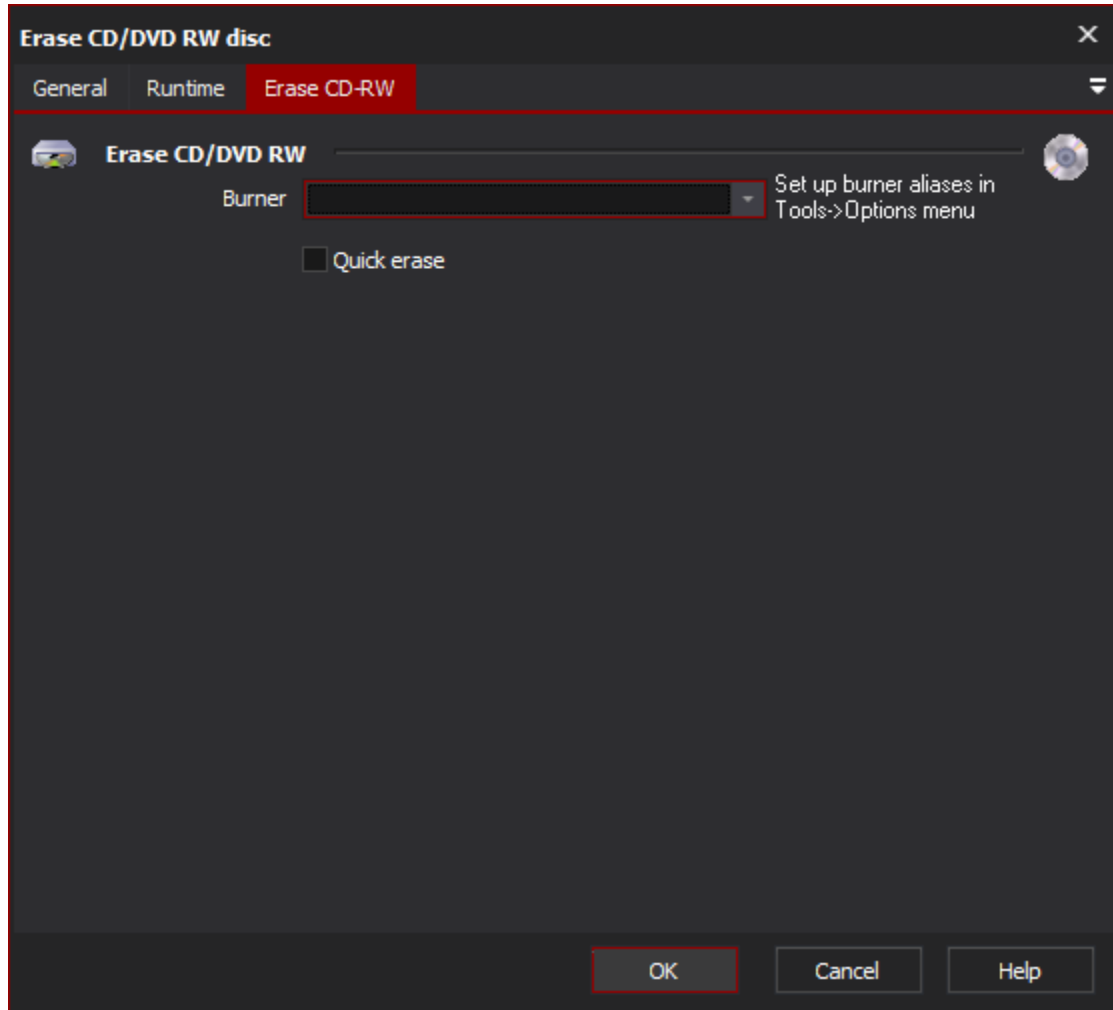


# Erase CD/DVD RW Action

[Automise Professional Edition]

This action allows you to Erase rewritable CD/DVD media (if your burner supports this). To use this action you need to define an alias for your burner first (see [here](#) for more info). If your burner does not support rewritable media then it will not appear in the list of burner aliases.

Quick Erase is recommended for most media and is substantially faster (full erase can take a long time on a DVDRW!).



On this page:

## Erase CD/DVD RW

### Burner

The burner which contains the DVD/CD media on which the files are to be erased.

### Quick Erase

Where to use the quick erase method or not. By default the full erase method is used.