

Burn CD/DVD Action

This action supports burning files direct to CDR/CDRW/DVDR & DVDRW Media (depending on your burner hardware). The files burned directly to the drive, ie an image is not created first. To use this action you need to define an alias for your burner first (see [here](#) for more info).

On this page:

Burn CD/DVD

If you are having problems seeing the files on your DVD or CD after burning, then you might have to enable the "Eject after Write" option so that the operating system refreshes the contents of the media.

The File Selection editor allows you to select files & folders and use wildcards or regular expressions to add files to the selection.

Burn CD/DVD

General Runtime **Burn CD/DVD** Files

Burn to CD/DVD

Burner Set up burner aliases in Tools | Options menu

Burn options

☒ Joliet file system ☐ UDF file system

☐ Close disc (finalize) ☐ Test write

☐ Eject after write

☐ Fail if image size greater than: 640 MB

Volume label MyLabel Burn verification level None

☐ Preserve file creation & modification DateTimes

Session import

☐ Import last session ☒ Do not import last session

Bootable image file

OK Cancel Help

Burn to CD/DVD

Burner

The burner which contains the DVD/CD media on which the files are to be written.

Burn Options

Joliet File System

Enables the Joliet extensions to the ISO9660 file system. This allows you to have file names longer than 8.3 characters. In almost all instances, you'll want to leave this option enabled.

UDF File System

Use the Universal Disk Format when writing to the DVD/CD.

Close Disc (Finalize)

Enable this option if you don't want to write any further data to the disc.

Test Write

Enable this option if you don't want to actually write any data to the disc.

Eject after write

Enable this option to eject the disc when writing completes. If you are having problems seeing the files on your DVD or CD after burning, then you might have to enable this option.

Fail If Image Size Greater Than

If the image to be written to the disk is larger than the specified value the action will fail.

Volume Label

The text to write to the disk volume as its label.

Burn Verification Level

The type of verification to perform after the disk is written. There are three values for this option;

None: No verification is performed after the disk is written.

Quick: The quickest verification is performed. This gives some confidence that the image has been written correctly to the disk.

Full: The best level of verification that can be performed.

Preserve File Creation & Modification DateTimes

Set this option to have the same file creation/modification dates and time on the media as the original files.

Session Import

Import Last Session

Import the last session which was written to this device. Some sessions are not closed and therefore can continue to be written to. If the disk does not have any open sessions, the end result is the same as not importing the last session.

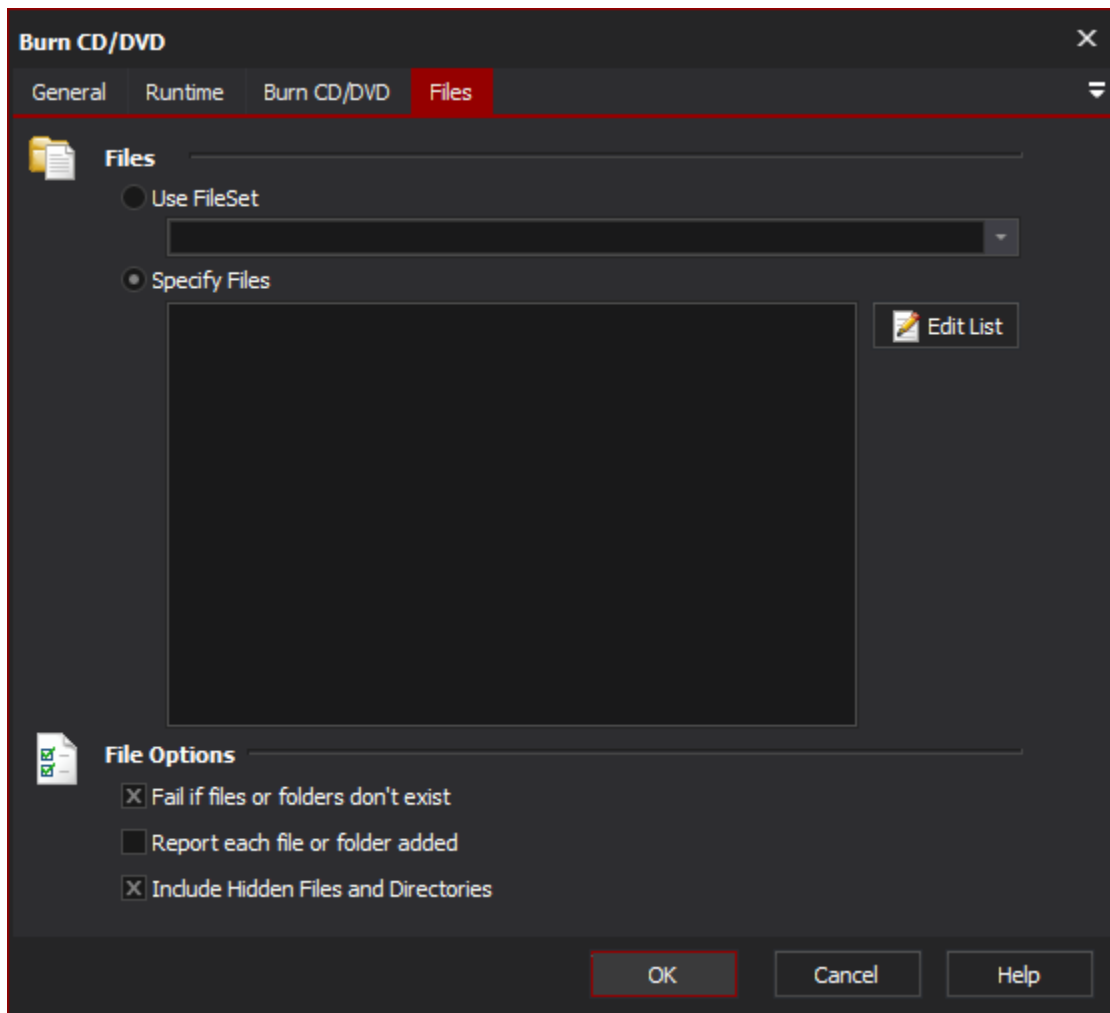
Do not Import Last Session

Leave the last session as it is. Start a new session and perform all operations on that session.

Bootable Image File

Specify the boot image file to be written to the disk. This will be written in a way that results in the CD/DVD gaining the ability to be used as a boot device.

Files



Files

Use FileSet

Specify a FileSet to write to the media. Using a FileSet enables the script to perform other actions on the selected files before and after they are written to the DVD/CD.

Specify Files

In the File spec you can enter a normal DOS type file spec using wild cards * and ?

You can also specify a [regular expression](#), but you need to select the "Regular Expression" checkbox. If you are specifying *.* you should not select regular expression as it is an invalid regular expression.

File Options

Fail if files or folder don't exist

If files or folders are specified in those to be written to the CD/DVD are not able to be located the action will fail. The list of files will be expanded before the disk is written to.

Report each file or folder added

Simply reports each file which listed to be written to the disk. This can slow down the writing of the disk when there are a large number of files.

Include Hidden Files and Directories

Flags that hidden files and directories are to be included when processing the list of files to write to the disk. By default they are not included.