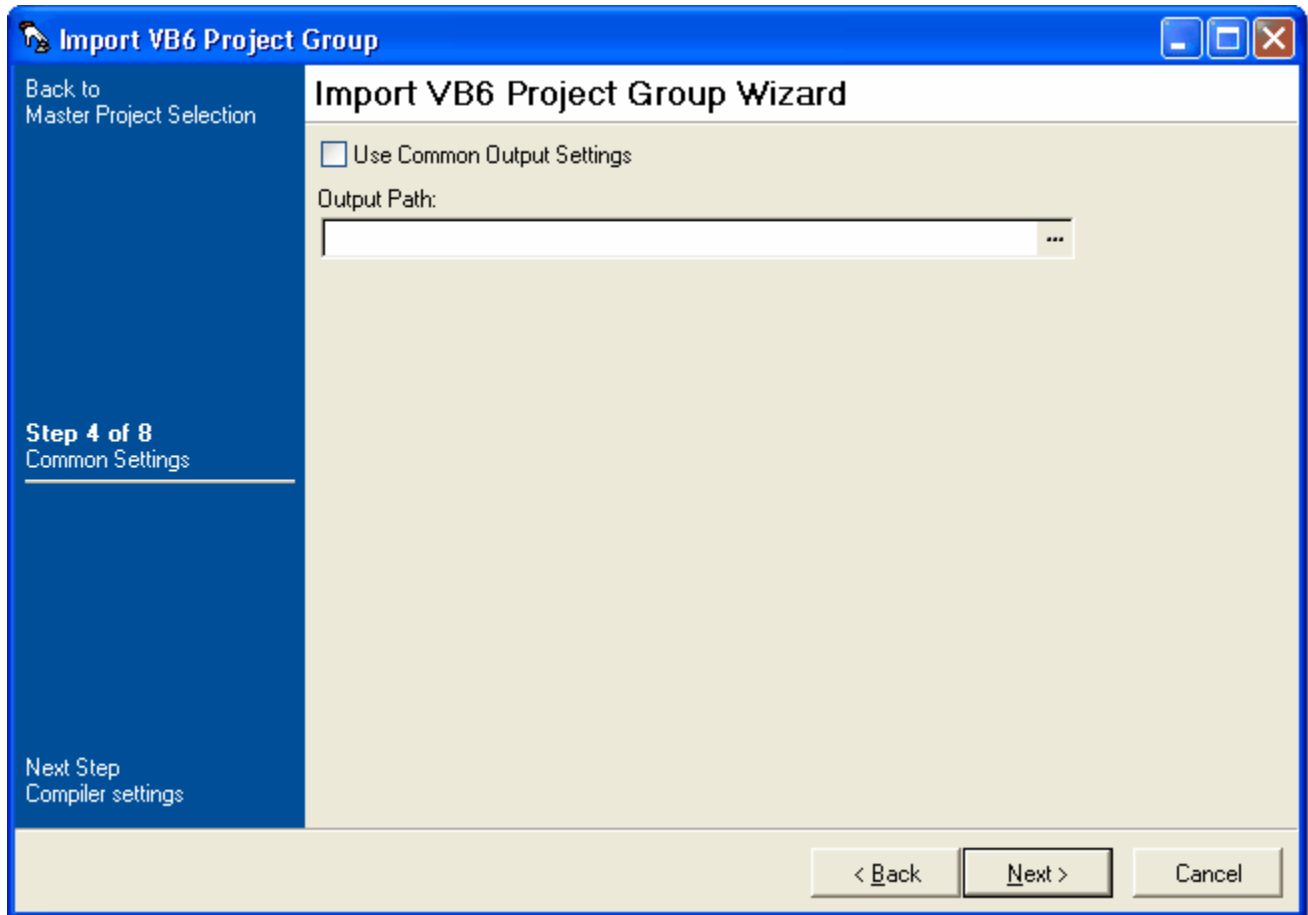


## Step 4 - Common Output Path Setting



### Use Common Output Settings

Whether all the generated Compile Visual Basic 6 Project Actions will have the same output path or not. If turned on the Output Path needs to be specified.

### Output Path

If Use Common Output Settings has been selected then a folder location needs to be entered. The output path can be any text and isn't verified for the folders existence. This means a variable can be used if required for the full path, or part there of.

Next: [Step 5 - Compiler Settings](#)