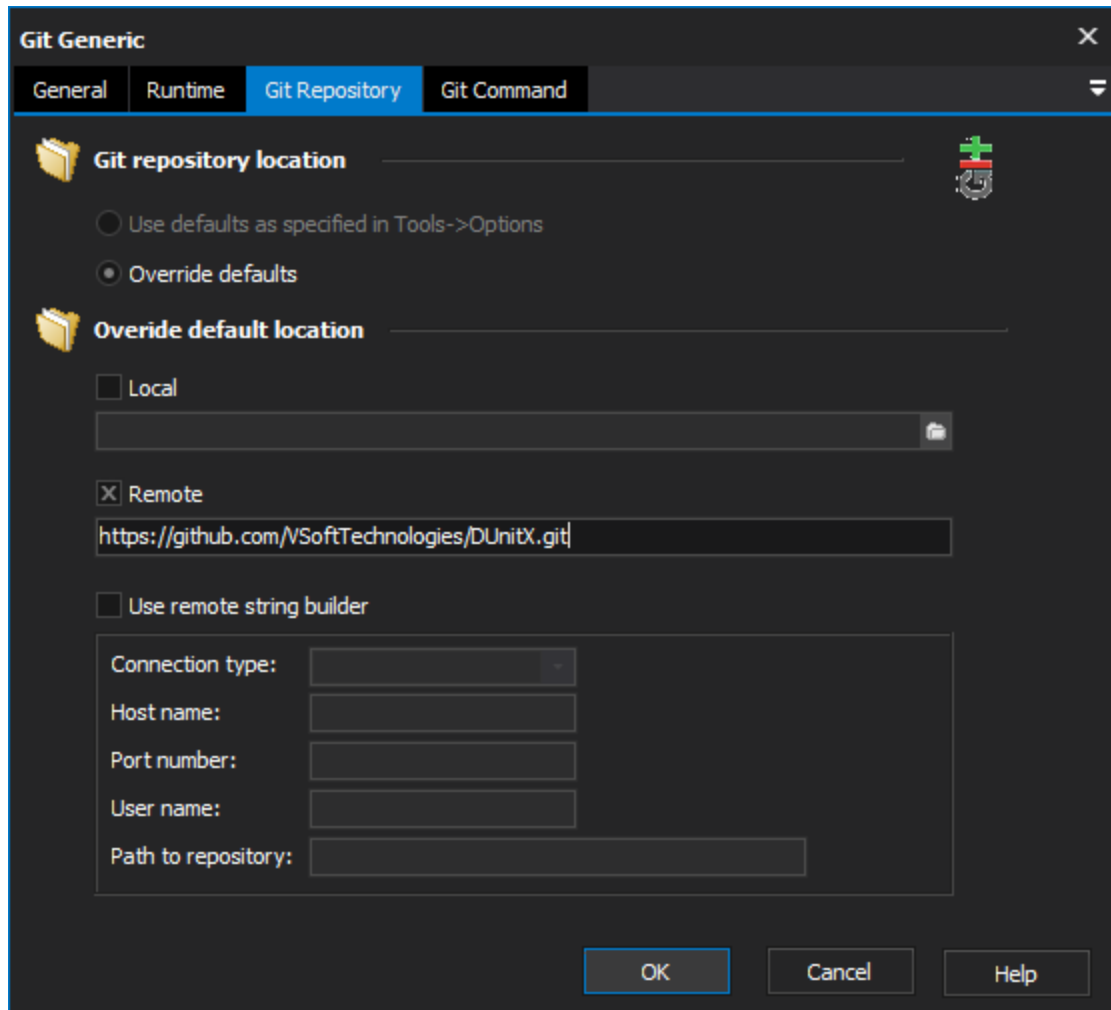


Git Pull Action

The Git Pull action allows you to fetch and merge with another repository into a local branch.

From the Git Repository tab select the location of the local repository that you want to pull into. To pull from a remote repository, provide the location on the same tab (not necessary if you have specified a default which is the one that you want to use).



The screenshot shows the 'Git Generic' dialog box with the 'Git Repository' tab selected. The dialog has four tabs: 'General', 'Runtime', 'Git Repository', and 'Git Command'. The 'Git Repository' tab is active, showing options for repository location. There are two radio buttons: 'Use defaults as specified in Tools->Options' (unselected) and 'Override defaults' (selected). Below this is a section for 'Override default location' with two options: 'Local' (unselected) and 'Remote' (selected). The 'Remote' option has a text field containing the URL 'https://github.com/VSoftTechnologies/DUnitX.git'. There is also an unchecked checkbox for 'Use remote string builder'. Below this is a group box containing five fields: 'Connection type:' (a dropdown menu), 'Host name:', 'Port number:', 'User name:', and 'Path to repository:'. At the bottom of the dialog are three buttons: 'OK', 'Cancel', and 'Help'.

Git Generic

General Runtime **Git Repository** Git Command

Git repository location

☐ Use defaults as specified in Tools->Options

☒ Override defaults

Override default location

☐ Local

☒ Remote

https://github.com/VSoftTechnologies/DUnitX.git

☐ Use remote string builder

Connection type:

Host name:

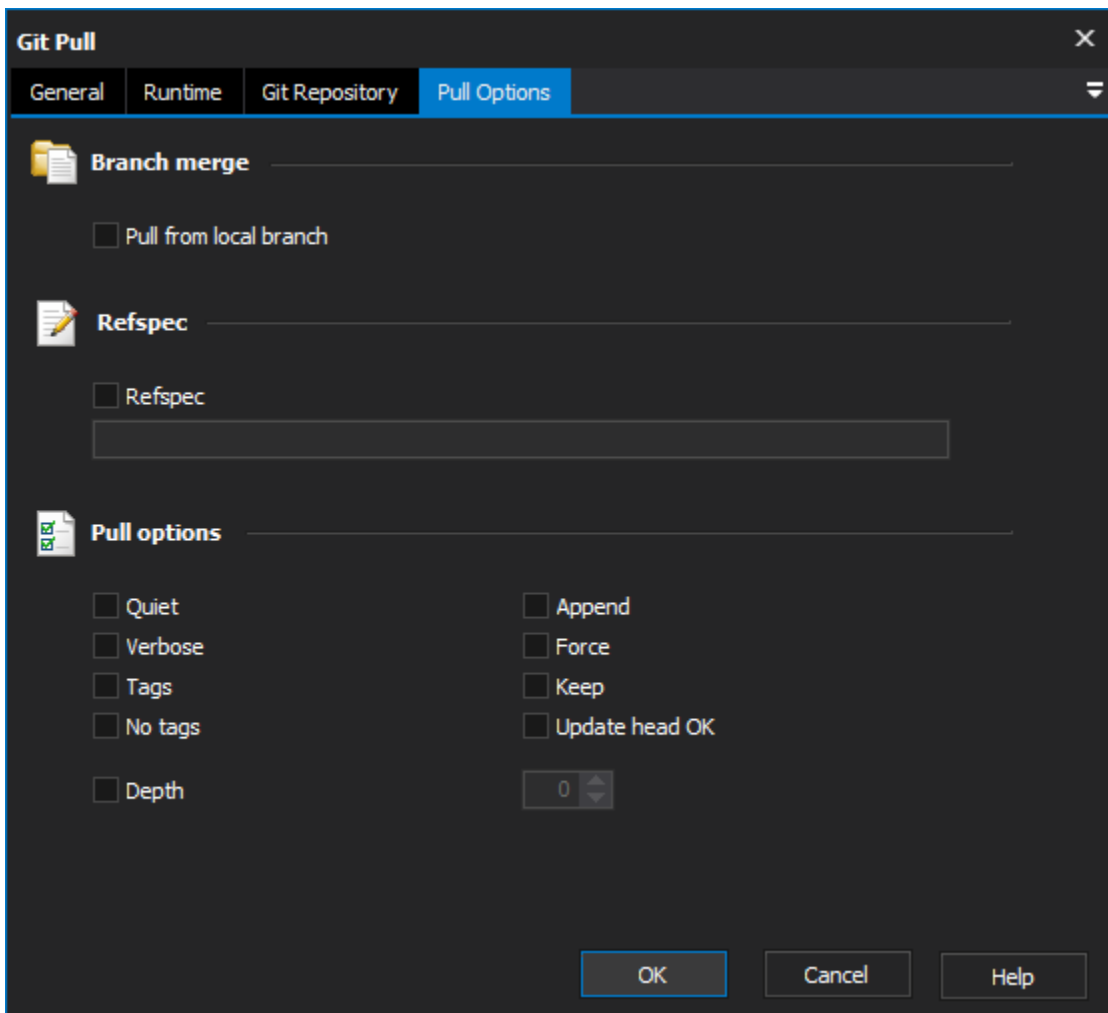
Port number:

User name:

Path to repository:

OK Cancel Help

To pull from a local repository go to the Pull Options tab and select the Pull from local branch option. This will allow you to pull from the current repository.



The Respect option allows you to specify the source and destination refs for the fetch portion of the pull operation. The basic syntax for doing this is `<source ref>:<destination ref>`. For more information about using the refspec option see .

There are also a number of options available from the Pull Options tab:

Quiet - Suppress output from Git.

Verbose - Verbose output from Git.

Tags - This option specifies that all tags (and their associated objects) should be downloaded, even those that are not reachable from the branch heads that are being tracked (which are omitted by default).

No Tags - Tags that point to objects are downloaded from the remote repository by default. This option disables this from occurring.

Append - Append ref names and object names of the fetched material to the existing contents of `.git/FETCH_HEAD`. If this option is omitted the old data in this location will be overwritten.

Force - When using the refspec option to specify `<remote branch>:<local branch>` the fetch operation will not allow you update the local branch if the remote branch is not a descendant of the local branch. This option forces the fetch to occur regardless.

Keep - Keep downloaded pack.

Update Head Ok - The fetch command will not allow you to update the head which corresponds to the current branch by default. This option disables the check.

Depth - Increase the history depth of a shallow repository by the specified number of commits.

For more information on pulling in git, see: