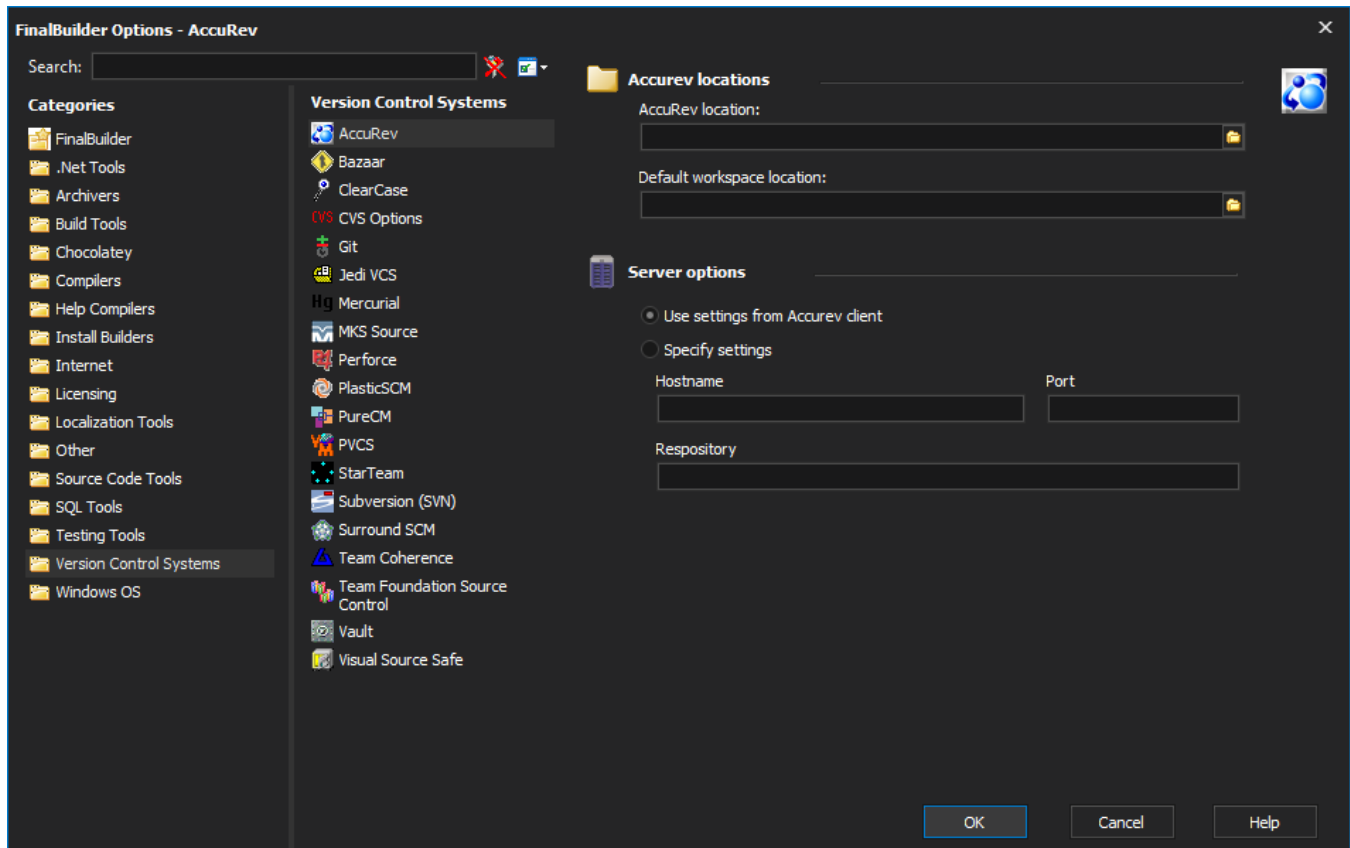


Accurev

The AccuRev actions allow interaction with an AccuRev SCM server.

For more information regarding AccuRev, visit .

Global Options



AccuRev Location

The full path to the accurev.exe application.

Default Workspace Location

The local path for the default workspace, this option can be overridden in each action.

Use settings from AccuRev Client

This option will allow AccuRev to use settings previously defined in the Client GUI, which are stored in accclient.cnf.


Specify Settings

Specifying the server settings here will allow all actions to use the specified server.

Common Options

AccuRev Add ✕

General Runtime Add Options **Server Options** ▾

 **Server options**

☒ Use settings defined in global options

☐ Use settings from AccuRev client

☐ Specify server settings

Hostname

Port

Respository

OK **Cancel** **Help**

These options allow each action to have different server settings.

Using settings from AccuRev Client will ignore any settings defined in the Global Settings.