

ILMerge Action

The ILMerge action enables you to merge multiple .Net assemblies into a single assembly.

ILMerge


General

Runtime

ILMerge Options

Assembly Locations

Search Directories

 ILMerge options

Output assembly type

Use Primary Assembly's Type

Output assembly version

1.0.0.0

☐ Merge XML documentation files

☐ Internalize


☐ Verbose logging

☐ Target framework

Framework version

v2.0

Framework directory

 Assembly signing

Strong name key path

C:\Projects\Key\keypair.snk

☐ Delay sign

OK

Cancel

Help

On this page:

ILMerge Options

ILMerge Options

Output Assembly Type

Controls whether the output assembly is a Windows Application, Console Application or a Library. The default setting, Use Primary Assembly's Type, will make the output assembly the same type as the primary assembly.

Output Assembly Version

Allows the output assemblies version to be specified. The value should be in standard .Net versioning notation (example: 1.0.0.0).

Merge XML Documentation Files

Controls whether the XML Documentation files will be merged together to produce a single XML Documentation file for the output assembly.

Internalize

Controls whether the non-primary assemblies will have their visibility changed to internal.

Verbose Logging

When enabled, the action will produce a full log of the merging process.

Target Framework

Enable this option to specify the version of the .NET Framework to use. Use the Framework Version drop down list to select the version and Framework Directory field to specify the directory of the framework to be used.

Assembly Signing

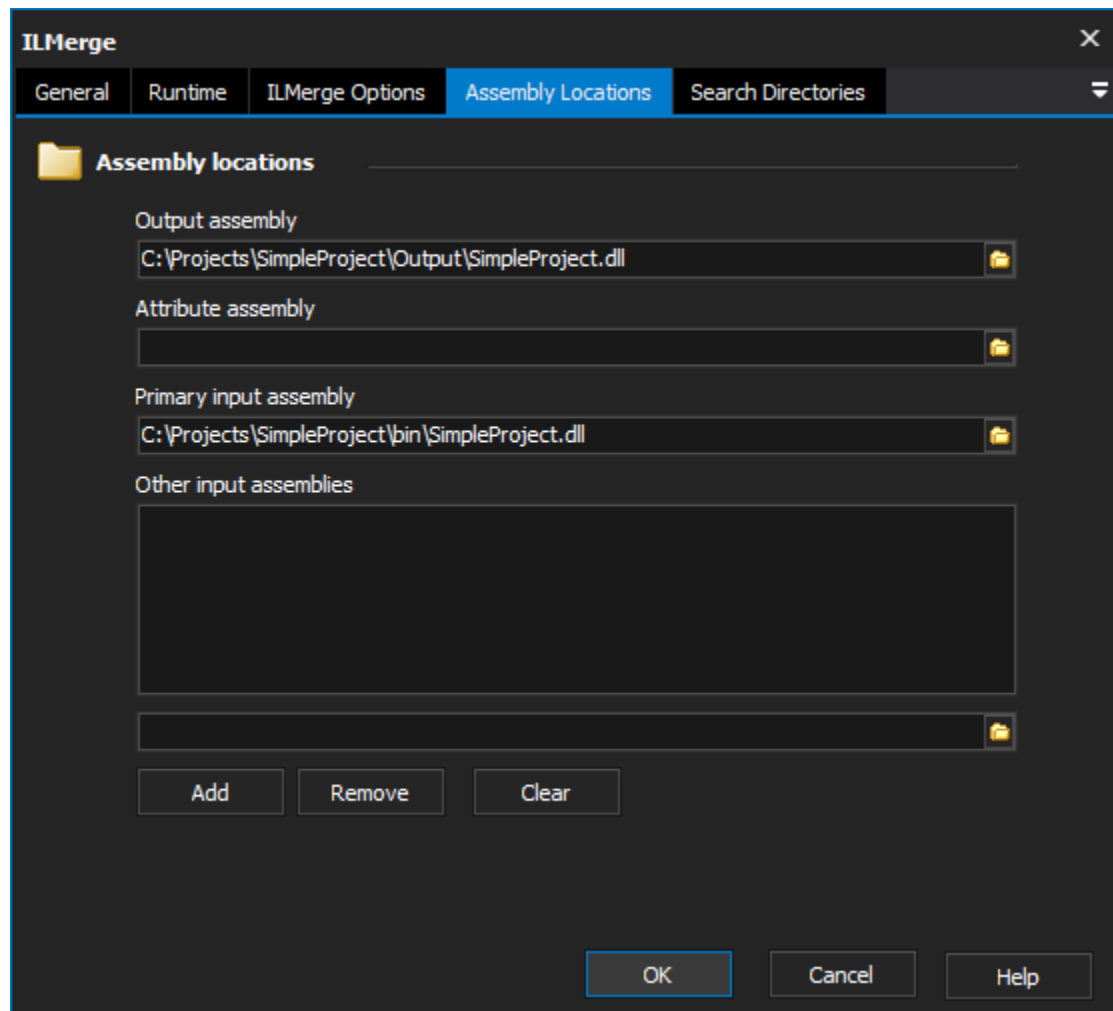
Strong Key Name Path

The path to the strong key name file to be used to sign the output assembly. If no key is specified the output assembly will not be signed.

Delay Sign

Controls whether the output assembly will be delay signed.

Assembly Locations



The screenshot shows the 'ILMerge' application window with the 'Assembly Locations' tab selected. The dialog has a dark theme and a tabbed interface with tabs for 'General', 'Runtime', 'ILMerge Options', 'Assembly Locations', and 'Search Directories'. Under the 'Assembly Locations' tab, there is a section titled 'Assembly locations' with a folder icon. It contains four input fields, each with a file explorer icon on the right: 'Output assembly' (C:\Projects\SimpleProject\Output\SimpleProject.dll), 'Attribute assembly' (empty), 'Primary input assembly' (C:\Projects\SimpleProject\bin\SimpleProject.dll), and 'Other input assemblies' (empty). Below these fields are three buttons: 'Add', 'Remove', and 'Clear'. At the bottom of the dialog are three buttons: 'OK', 'Cancel', and 'Help'.

Assembly Locations

Output Assembly

The full path to the required location of the output assembly, including a filename.

Attribute Assembly

The full path to the assembly used for assembly-level attributes such as Culture, Version etc...

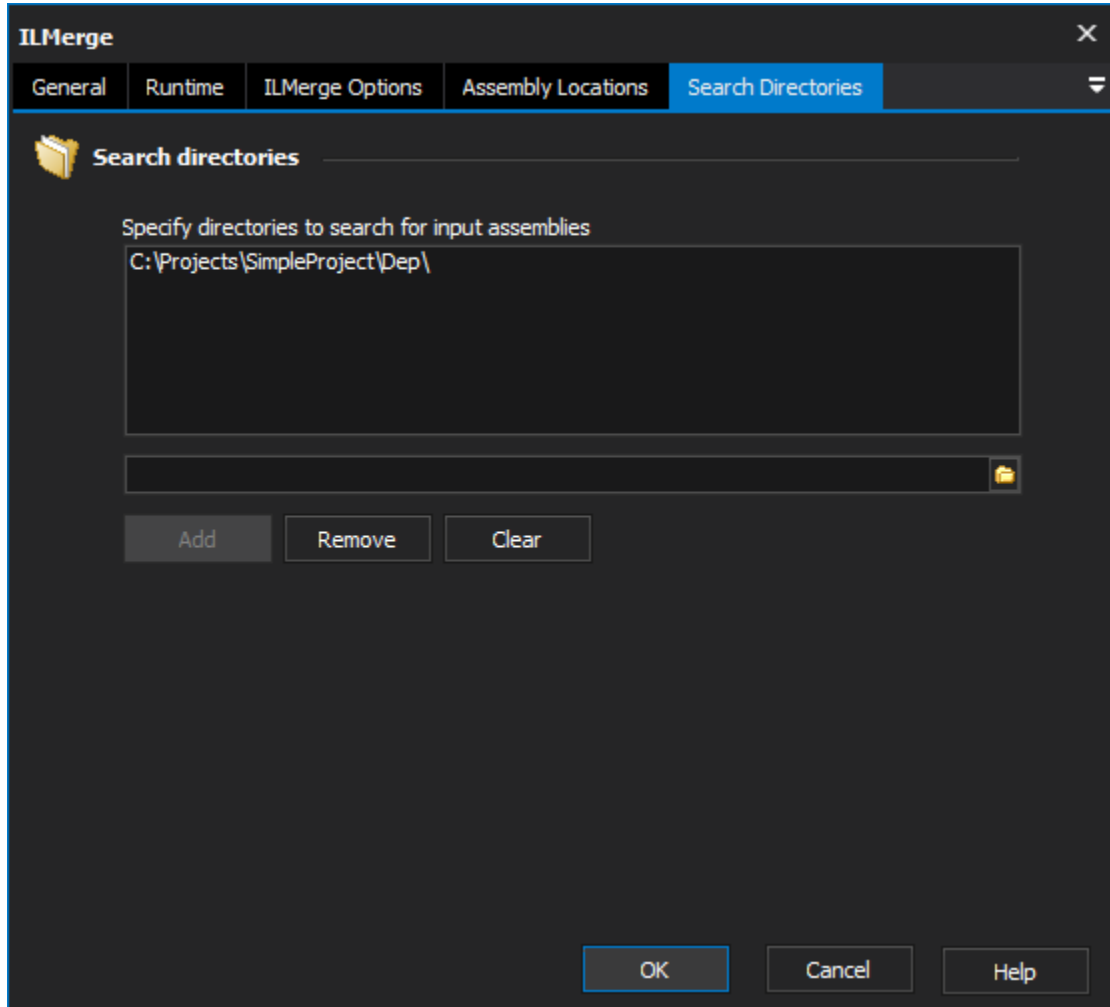
Primary Input Assembly

The primary assembly to use for merging. If this assembly is an executable the output assembly will be an executable with the same entry point.

Other Input Assemblies

This is a list of all the assemblies to be merged with the primary input assembly.

Search Directories



Search for Input Assemblies

Use the controls provided to add Directories that ILMerge should search for input assemblies.