

Create Web Site Action - [IIS 5]

Use the IIS Create Web Site action to create a new web site. The Create Web Site action also creates a root virtual directory.

Website Properties

The screenshot shows the 'Create Web Site (IIS 5)' dialog box with the 'Website Properties' tab selected. The dialog has four tabs: 'General', 'Runtime', 'Website Properties', and 'Permissions'. The 'Website Properties' tab contains the following fields and options:

- IIS server:** A section header with a server icon.
- Server:** A text box containing 'localhost'.
- New web site details:** A section header with a globe icon.
- Description (ServerComment):** A text box containing 'Wiki'.
- ☒ **Fail if a web site with this description exists**
- ☐ **Delete and overwrite any web site with this description**
- Root directory:** A text box containing 'C:\LocalData\' with a folder icon to its right.
- ☒ **Start new website after creating it**
- Server bindings:** A section header with a server icon.
- Bind to IP:** A text box containing '192.168.12.10'.
- Port:** A text box containing '80'.
- Hostname:** A text box containing 'wiki.internal.testing'.
- (Leave fields blank to bind to any of a given parameter)

At the bottom of the dialog are three buttons: 'OK', 'Cancel', and 'Help'.

IIS Server

Choose the hostname of the IIS Server on which to create the web site.

Server

New Web Site Details

Description

Description specifies a ServerComment property for the web site (in other words its name.) Web sites are identified either by this property or their index number.

Fail if a web site with this description exists

If this option is checked, the action will fail if another web site already has this description.

Delete and overwrite any website with this description

If this option is checked, a web site with this name will be overwritten and replaced with the new site. The new web site will have the same index number as the old site.

If neither Fail nor Delete is selected, a new web site will be created even if it has the same description as a pre-existing one.

Root Directory

Specify a directory local to the server on which to create the root virtual directory. Set the permissions for this directory on the Permissions tab.

Start new web site after creating it

If this option checked, the new web site will be switched to the Running state after creation.

Even if this fails (most likely because another running web site is bound to the same host/server/port), the new web site is still created (in the Stopped state), but the action will fail.

For fine-grained control over failure (ie for use in [Try...Catch blocks](#)), use a separate Start Web Site action.

Server Bindings

You can specify a specific IP, hostname, or Port combination to bind the new server to. Leave values blank to match all-inclusive wild cards.

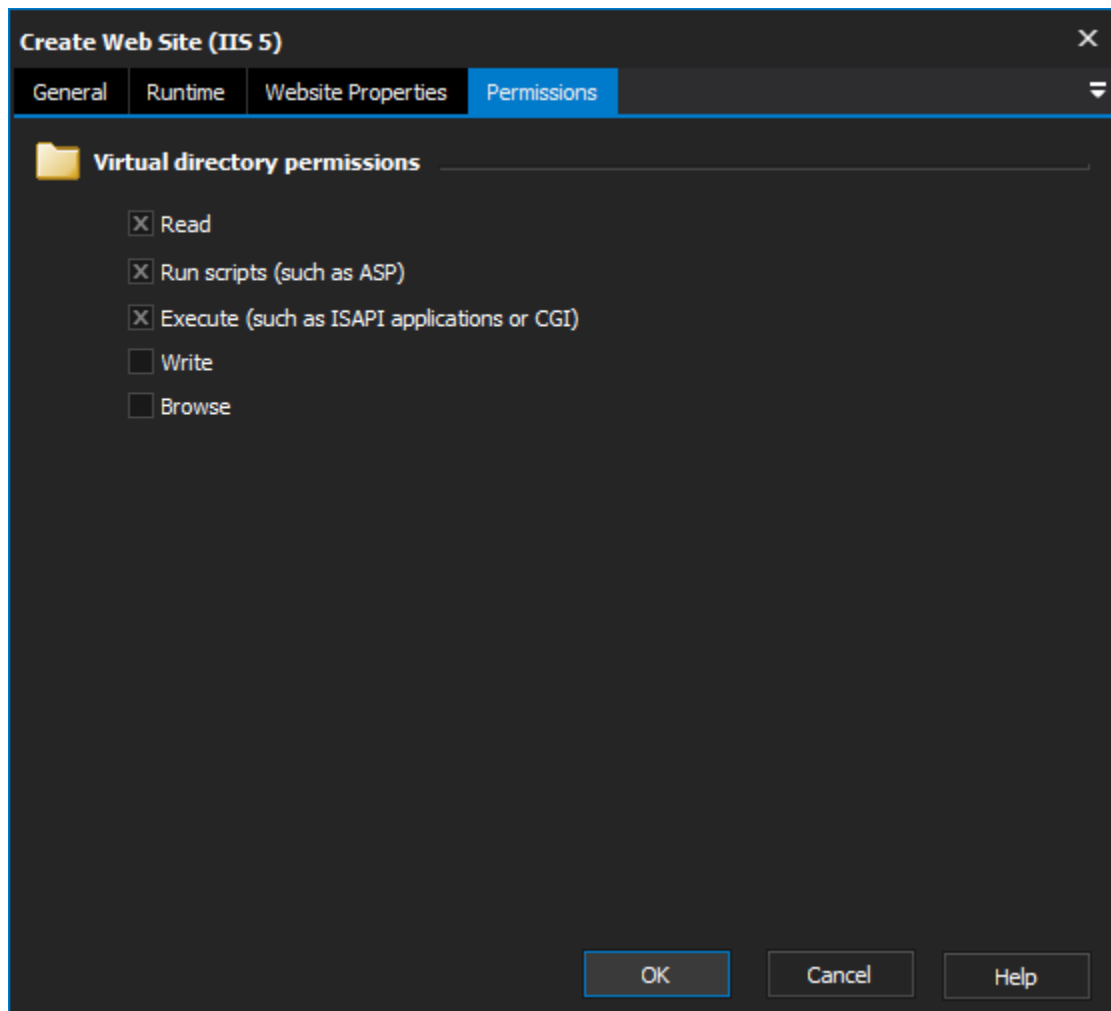
If any of these values overlap with an existing web site, the two cannot be run concurrently.

Bind to IP

Port

Hostname

Permissions



Set the permissions for the new web site's [root Virtual Directory](#).

Virtual directory permissions

Read

Run scripts

Execute

Write

Browse