

Wix Linker [Light] Action

This action provides an interface to the WiX linker (light.exe). The linker links .wixobj object files into a .msi Windows Installer Package.

Linker

Wix Linker ("light")

General Runtime **Linker** Options Parse Options

Object files

C:\Projects\SimpleProject\Build\SimpleProject.wixobj

Output

☐ Output to the same directory as the first object file

☒ Output to this file: %OutputDir%\SimpleProject.msi

☐ Output uncompressed images to a different directory: (-i)

☐ Output XML instead of MSI (-xo)

☐ Tag sectionId attribute in tuples (-ts)

Localization

☐ Read localization string from .wxl file:

OK Cancel Help

Object Files

Specify one or more .wixobj object files that you wish to link.

Output

Output can be sent to the default directory, or a specific .msi installer package file. Alternatively, uncompressed images can be output to a different directory. The linker can also output raw XML instead of MSI (useful for debugging.)

Output to the same directory as the first object file

Output to this file

Output uncompressed images to a different directory

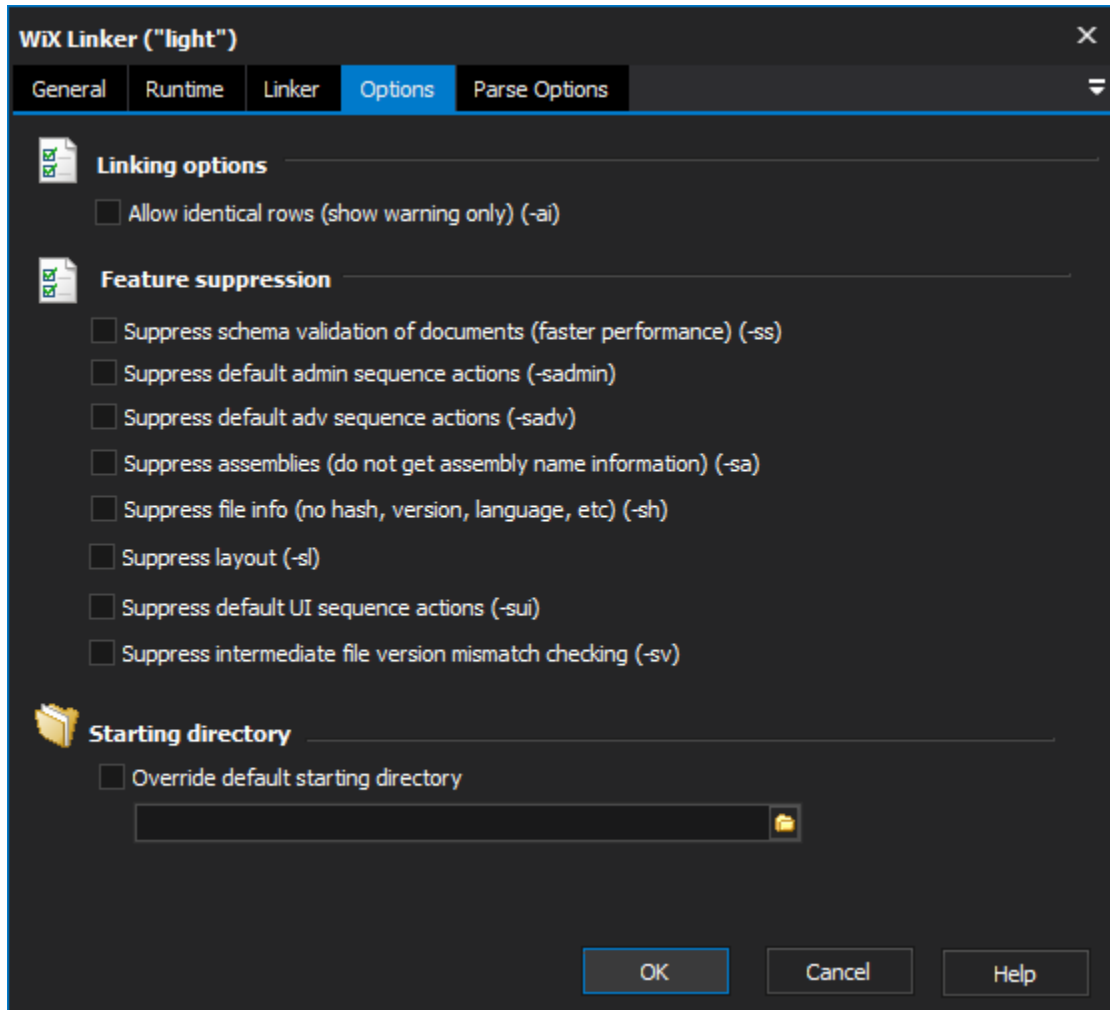
Output XML instead of MSI

Localization

A .wxl file can be used to create a localized installer package.

Read localization string from .wxl file

Options



Linking Options

Allow Identical Rows

Normally the WiX Linker will fail if it detects identical rows. With this option checked it will only emit a warning.

Feature Suppression

Various aspects of the WiX Link process can be bypassed. It is not recommended that you use these options unless you are sure you do not need the features specified.

Suppress schema validation of documents

Suppress default admin sequence actions

Suppress default adv sequence actions

Suppress assemblies

Suppress file info

Suppress layout

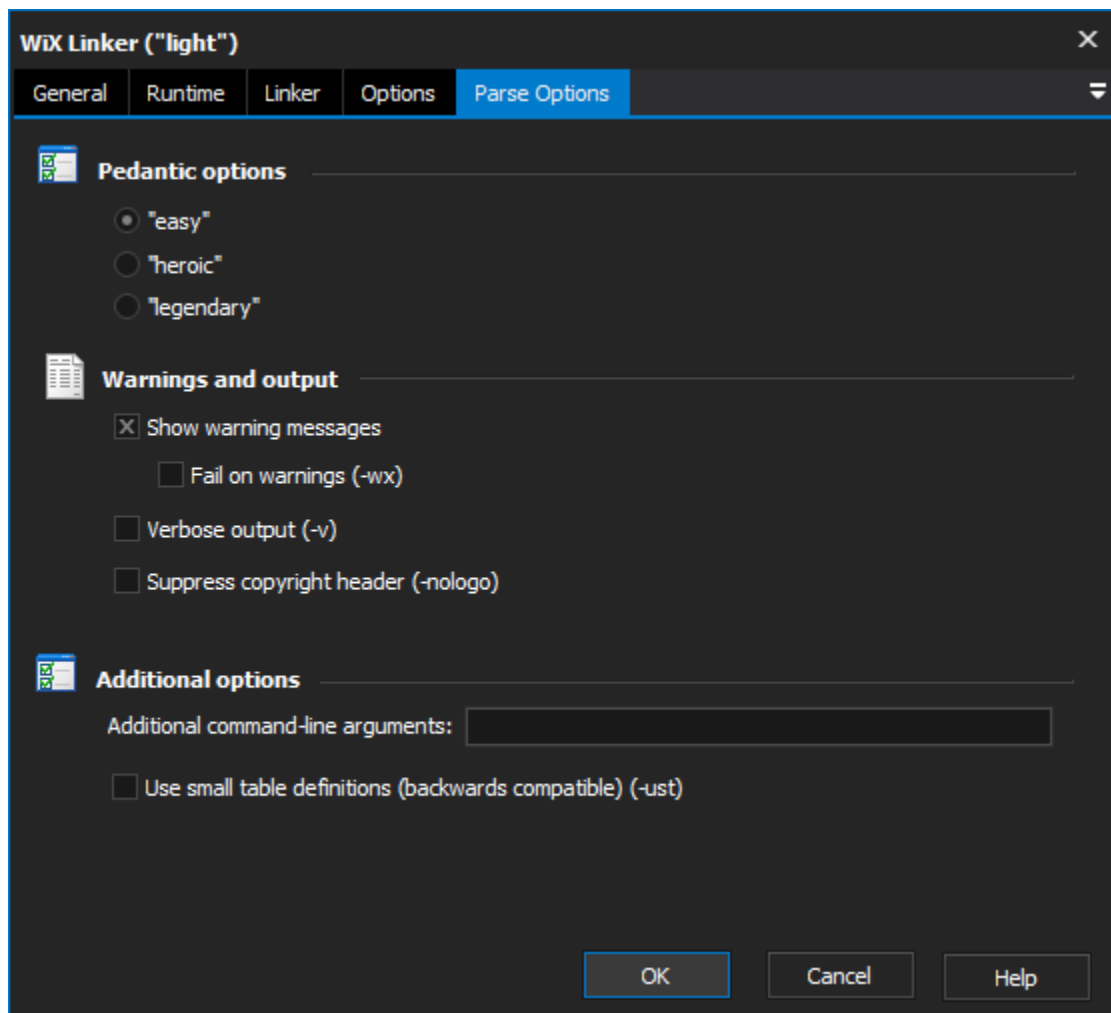
Suppress default UI sequence actions

Suppress intermediate file version mismatch checking

Starting directory

Override default starting directory

Parse Options



Pedantic Checks

Specifies how closely the compiler should check source file syntax. "Legendary" is more pedantic than "Heroic", and "Heroic" is more pedantic than "Easy" (the names correspond to the command line options.)

Easy

Heroic

Legendary

Warnings and output

Show Warning Messages

Warning messages will be recorded in the FinalBuilder log.

Fail on Warnings

Warnings will be treated as errors and the build will stop if any occur.

Verbose Output

More progress data will be logged (useful for debugging.)

Suppress copyright header

The WiX copyright header will not be displayed. Useful for a smaller log size.

Additional options

Additional Command-Line Arguments

Type any additional command line arguments that you want to pass to WiX.

Use small table definitions