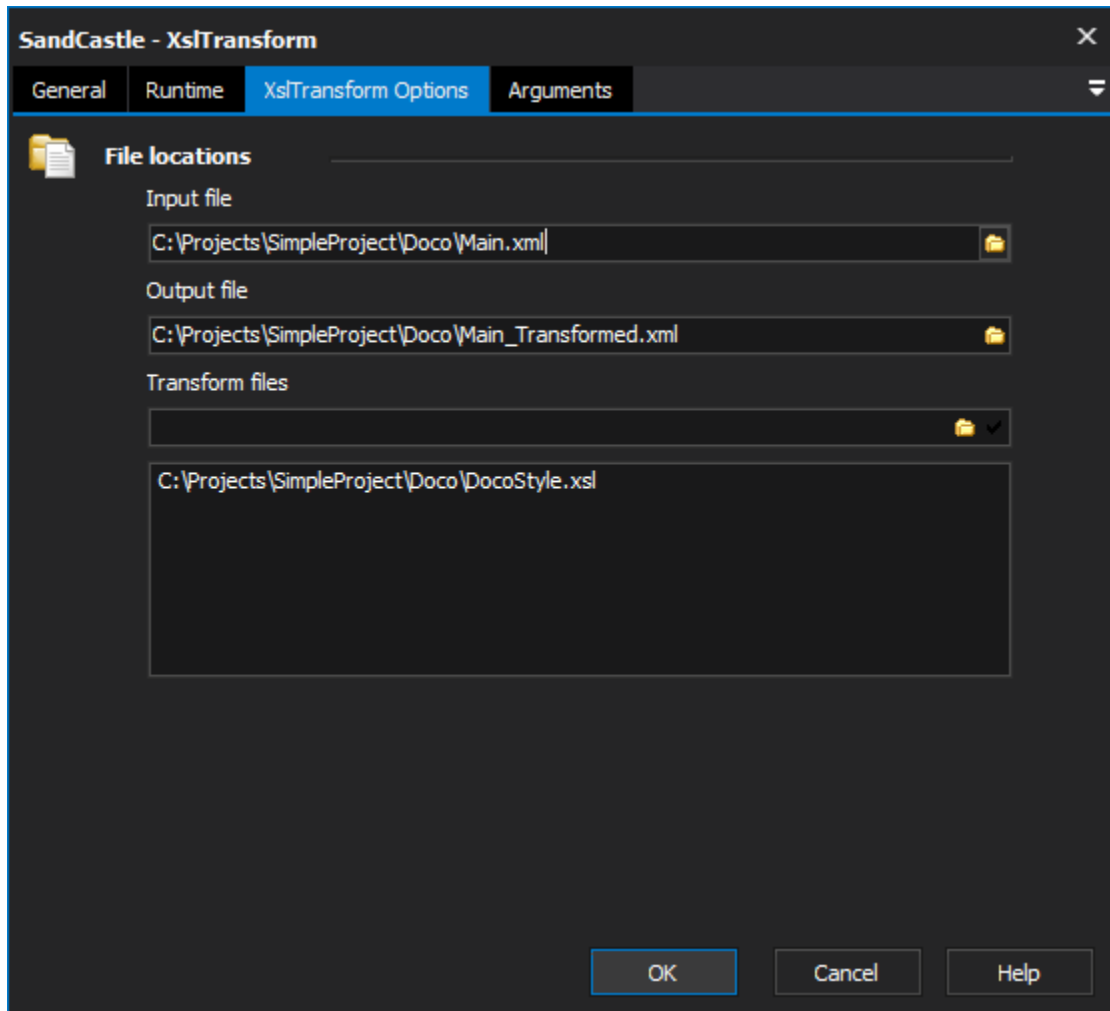


SandCastle XslTransform Action

The Sandcastle - XslTransform action enables you to apply XSL transforms to XML files.

XslTransform Options



File locations

Input file

The XML file that will be transformed by XSL transform file.

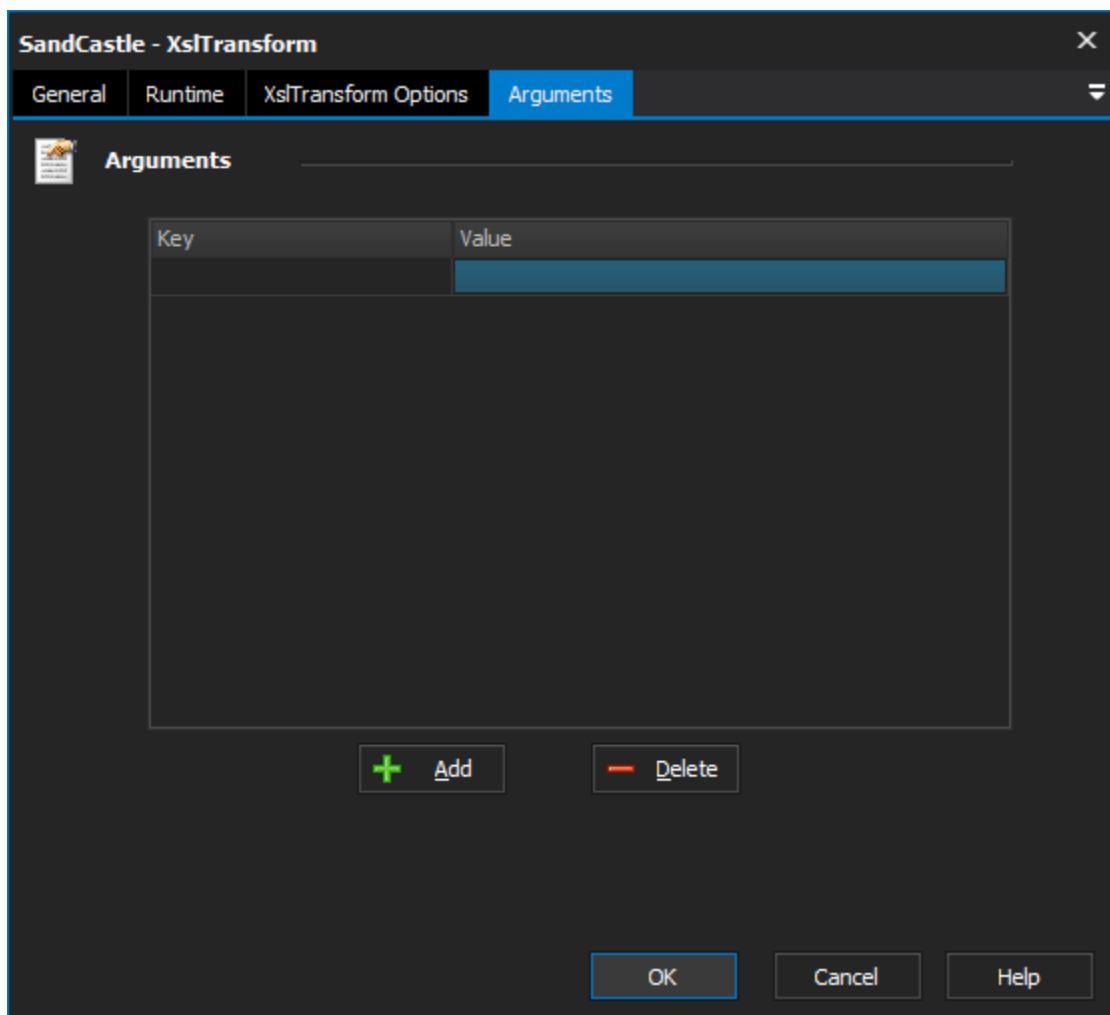
Output file

The file that will hold the transformed data.

Transform files

One or more files to use to transform the input file. When using multiple transform files, the output of the previous transform is used as the input for the next.

Arguments



Arguments

Extra arguments to provide to the XslTransform tool.