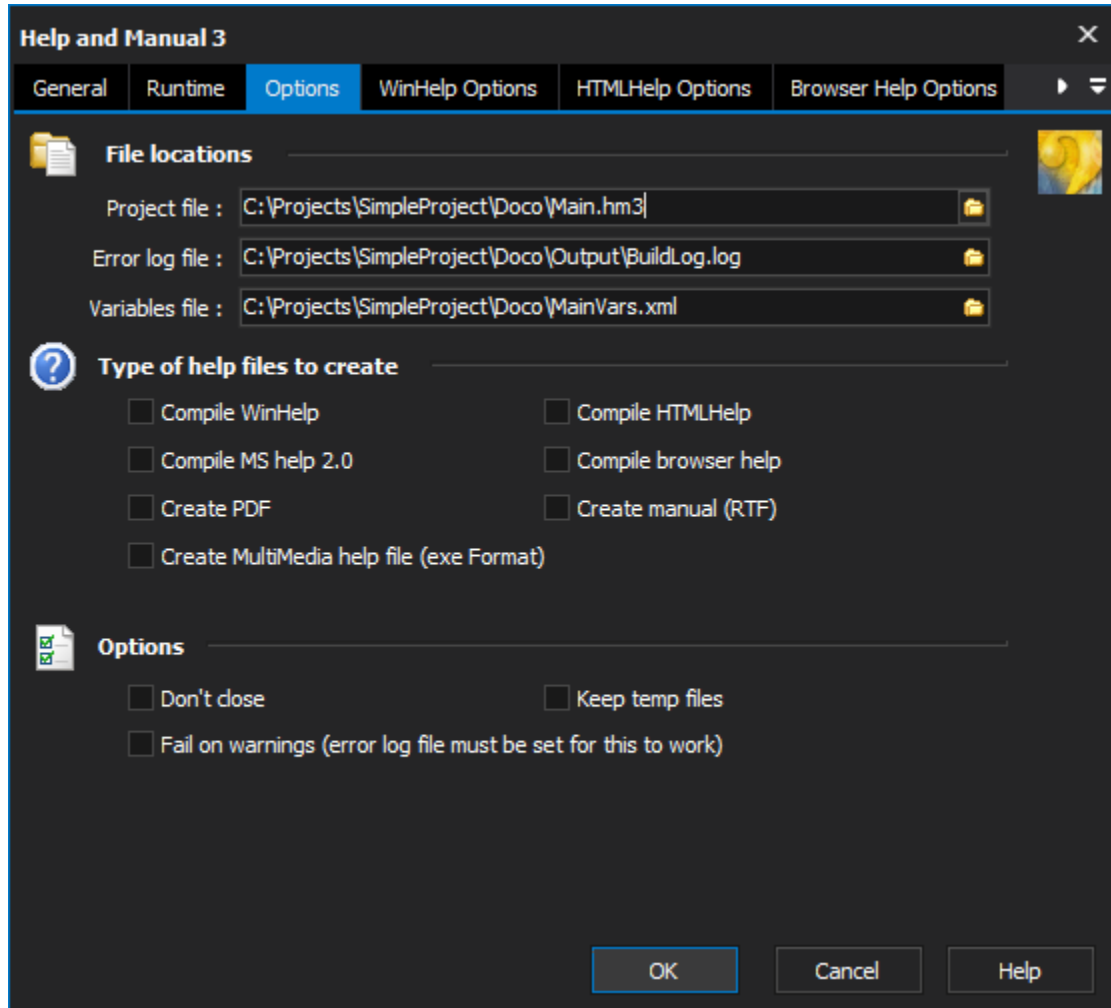


# Help & Manual Action

This Action enables the automated builds of Help & Manual projects - you can build multiple output formats in one action.

Help & Manual is a product of and is the tool we use and recommend for help file and manual generation.

## Options



**Help and Manual 3**

General Runtime **Options** WinHelp Options HTMLHelp Options Browser Help Options

**File locations**

Project file : C:\Projects\SimpleProject\Doco\Main.hm3

Error log file : C:\Projects\SimpleProject\Doco\Output\BuildLog.log

Variables file : C:\Projects\SimpleProject\Doco\MainVars.xml

**Type of help files to create**

☐ Compile WinHelp ☐ Compile HTMLHelp

☐ Compile MS help 2.0 ☐ Compile browser help

☐ Create PDF ☐ Create manual (RTF)

☐ Create MultiMedia help file (exe Format)

**Options**

☐ Don't dose ☐ Keep temp files

☐ Fail on warnings (error log file must be set for this to work)

OK Cancel Help

## File locations

### Project file

The Help & Manual project file to compile.

### Error log file

Outputs the compile log to the specified text file.

### Variables file

An external text file, which redefines some or all the variables in the specified project file. The file must only contain one definition per line.

## Types of help files to create

A list of the available project types to be built. More than one type of help file can be built. The specific options for each Help file type can be found under the relevant options tab.

### Compile WinHelp

Instructs Help & Manual to compile WinHelp based on the settings provided in the WinHelp options tab.

### **Compile MS Help 2.0**

Instructs Help & Manual to compile MS Help based on the settings provided in the MS Help options tab.

### **Create PDF**

Instructs Help & Manual to compile a PDF based on the settings provided in the PDF options tab.

### **Create MultiMedia help file**

Instructs Help & Manual to compile a MultiMedia help file based on the settings provided in the MultiMedia options tab.

### **Compile HTML help**

Instructs Help & Manual to compile HTML help based on the settings provided in the HTML help options tab.

### **Compile browser help**

Instructs Help & Manual to compile Browser help based on the settings provided in the Browser help options tab.

### **Create manual (RTF)**

Instructs Help & Manual to compile Rich Text Format help based on the settings provided in the RTF options tab.

## **Options**

### **Don't close**

The Help & Manual program will be left running after the action finishes.

### **Keep temp files**

Ensures the files generated by the 'HTML Help', 'WinHelp' and 'Visual Studio Help' help file compilers are not deleted

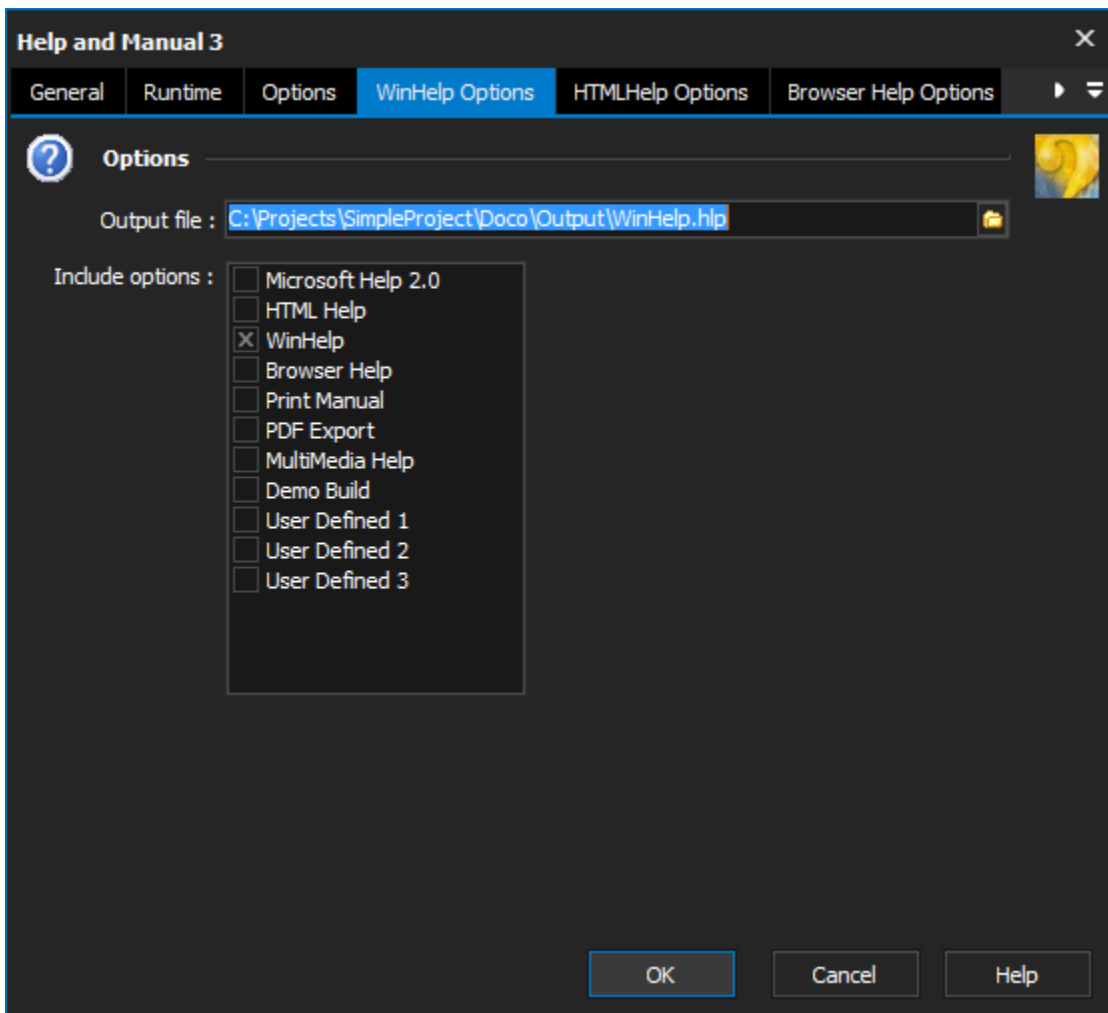
### **Fail on warnings**

Instructs the action to report a failure if any warnings are detected as being reported by Help & Manual.

### **H & M version**

The version of Help and Manual to run. Helpful when multiple versions are installed on the machine.

## **WinHelp Options**



## Options

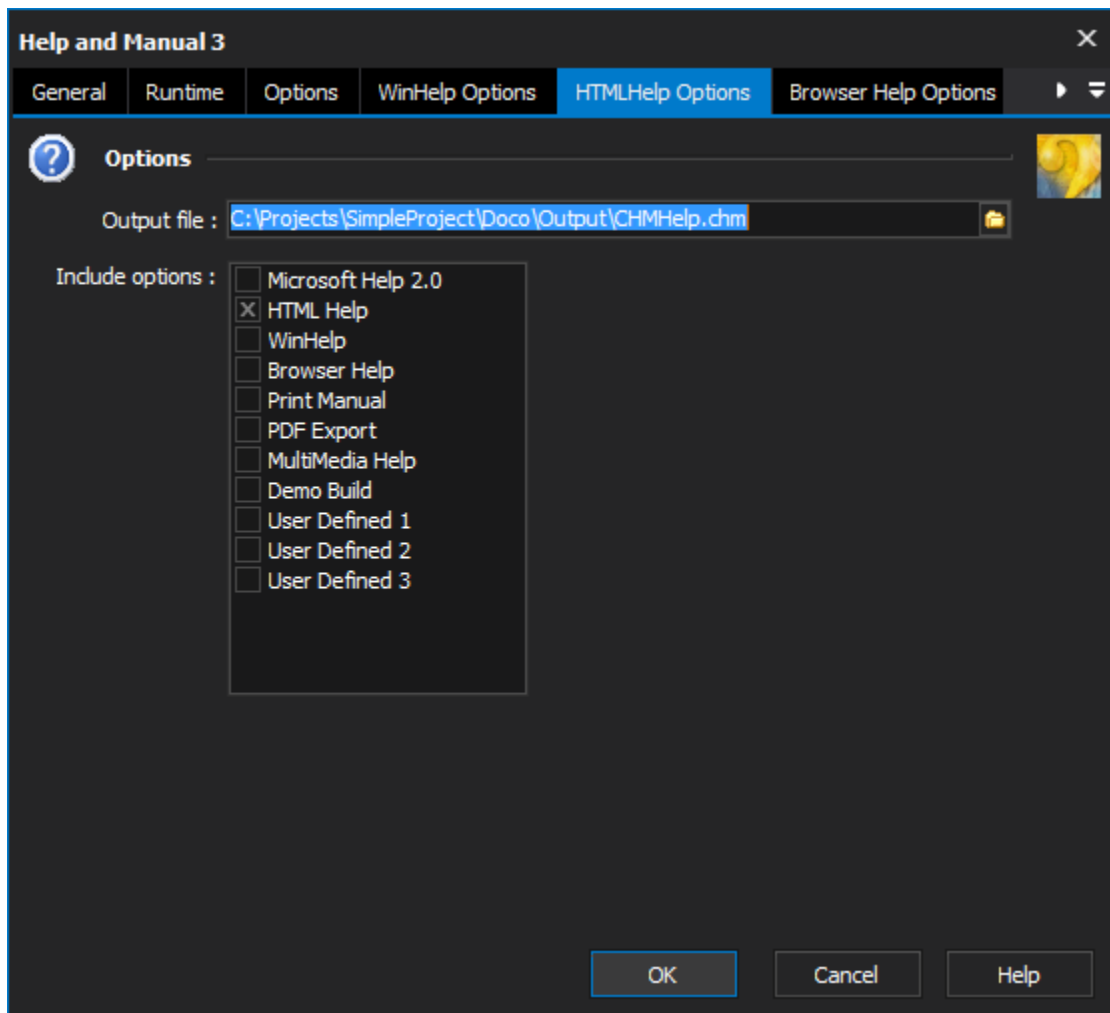
### Output file

The WinHelp file to generate from the Help & Manual project. The full path and filename should be specified.

### Include options

Options from the Help & Manual project to include when generating the WinHelp output. All option groups will be presented from the Help & Manual project. Ones that don't appear can be added by using the "Add" button and typing the name of the option set.

## HTMLHelp Options



## Options

### Output file

The HTML help file to generate from the Help & Manual project. The full path and filename should be specified.

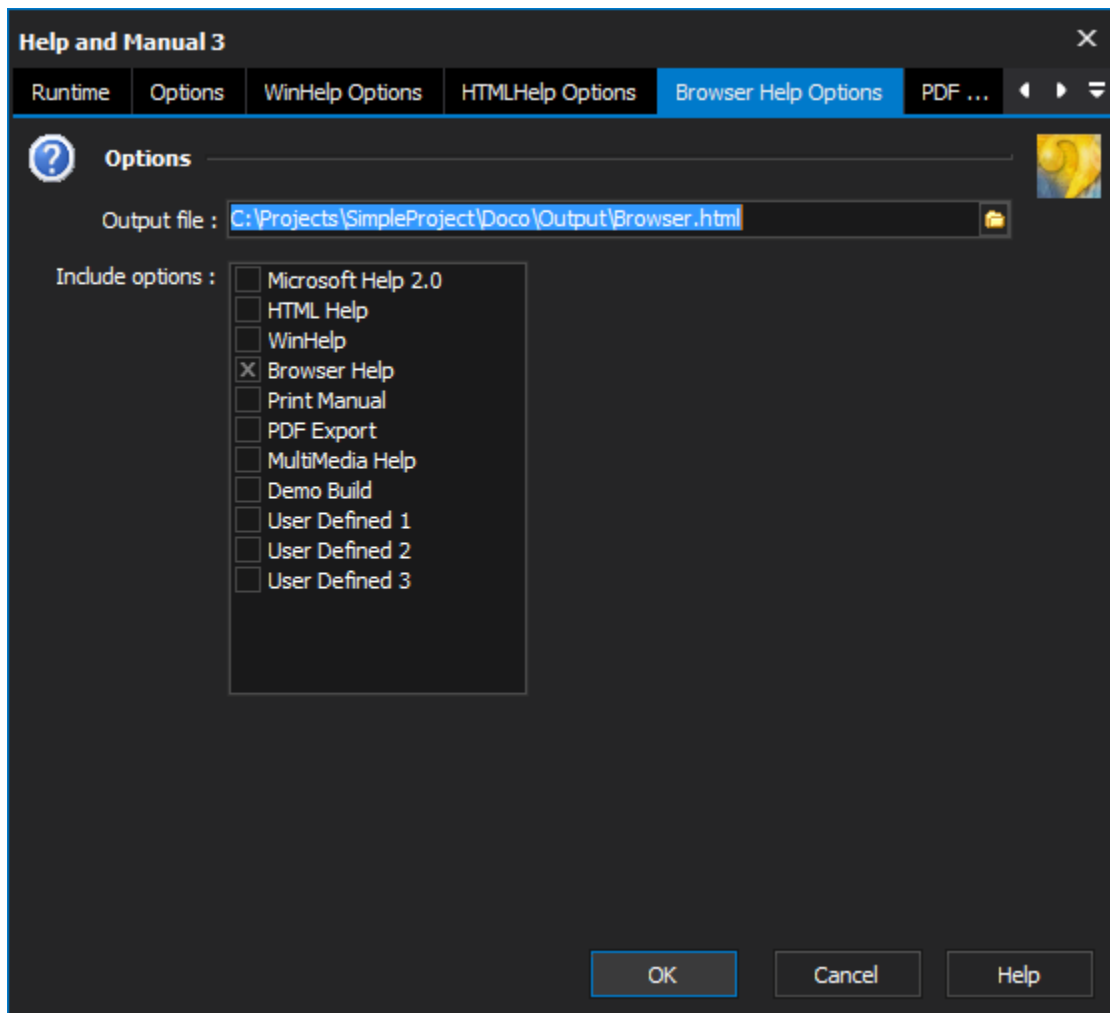
### Include options

Options from the Help & Manual project to include when generating the HTMLHelp output. All option groups will be presented from the Help & Manual project. Ones that don't appear can be added by using the "Add" button and typing the name of the option set.

### Skin file

The skin file to use in generating the HTMLHelp. If not specified the values set in the project file will be used instead.

## Browser Help Options



## Options

### Output file

The Browser help file to generate from the Help & Manual project. The full path and filename should be specified.

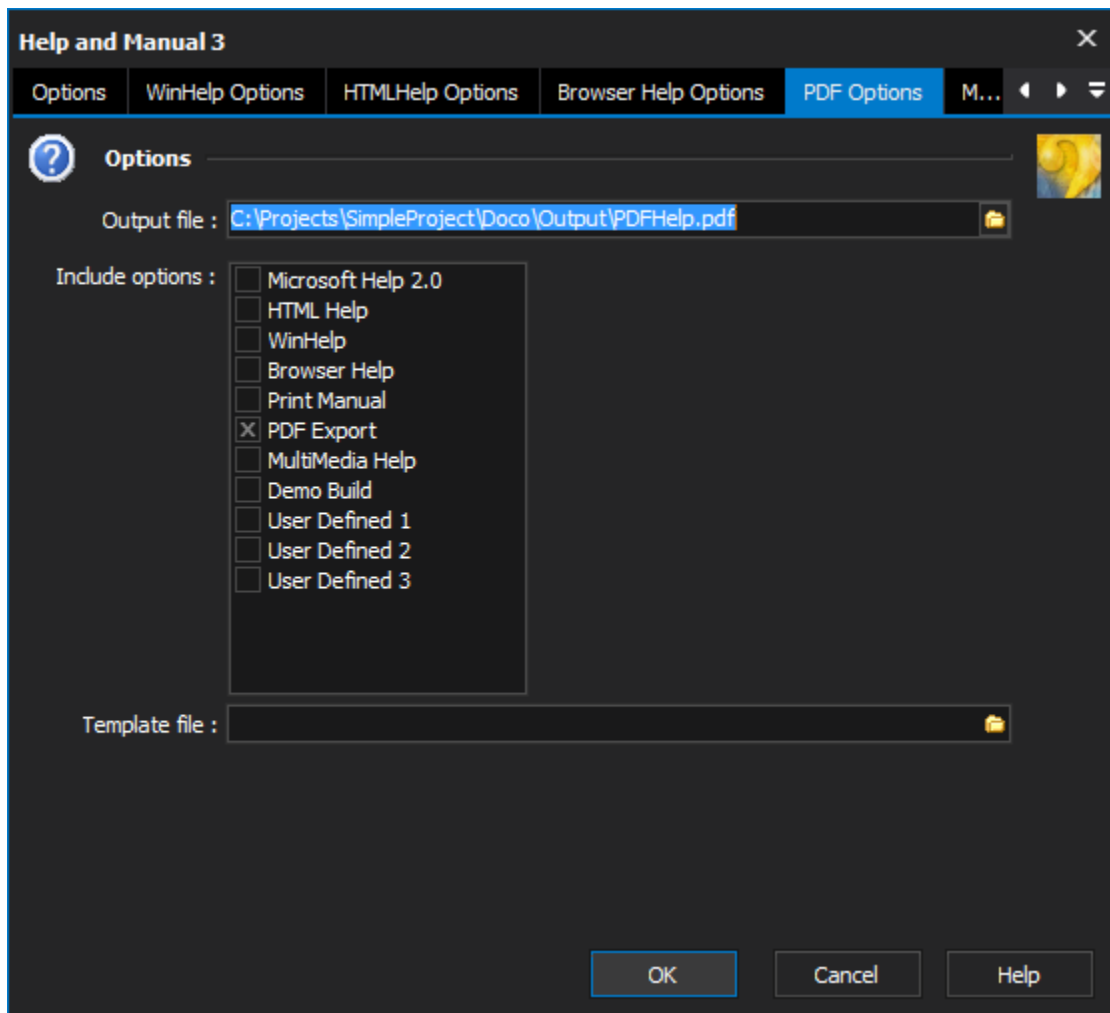
### Include options

Options from the Help & Manual project to include when generating the HTMLHelp output. All option groups will be presented from the Help & Manual project. Ones that don't appear can be added by using the "Add" button and typing the name of the option set.

### Skin file

The skin file to use in generating the HTMLHelp. If not specified the values set in the project file will be used instead.

## PDF Options



## Options

### Output file

The PDF help file to generate from the Help & Manual project. The full path and filename should be specified.

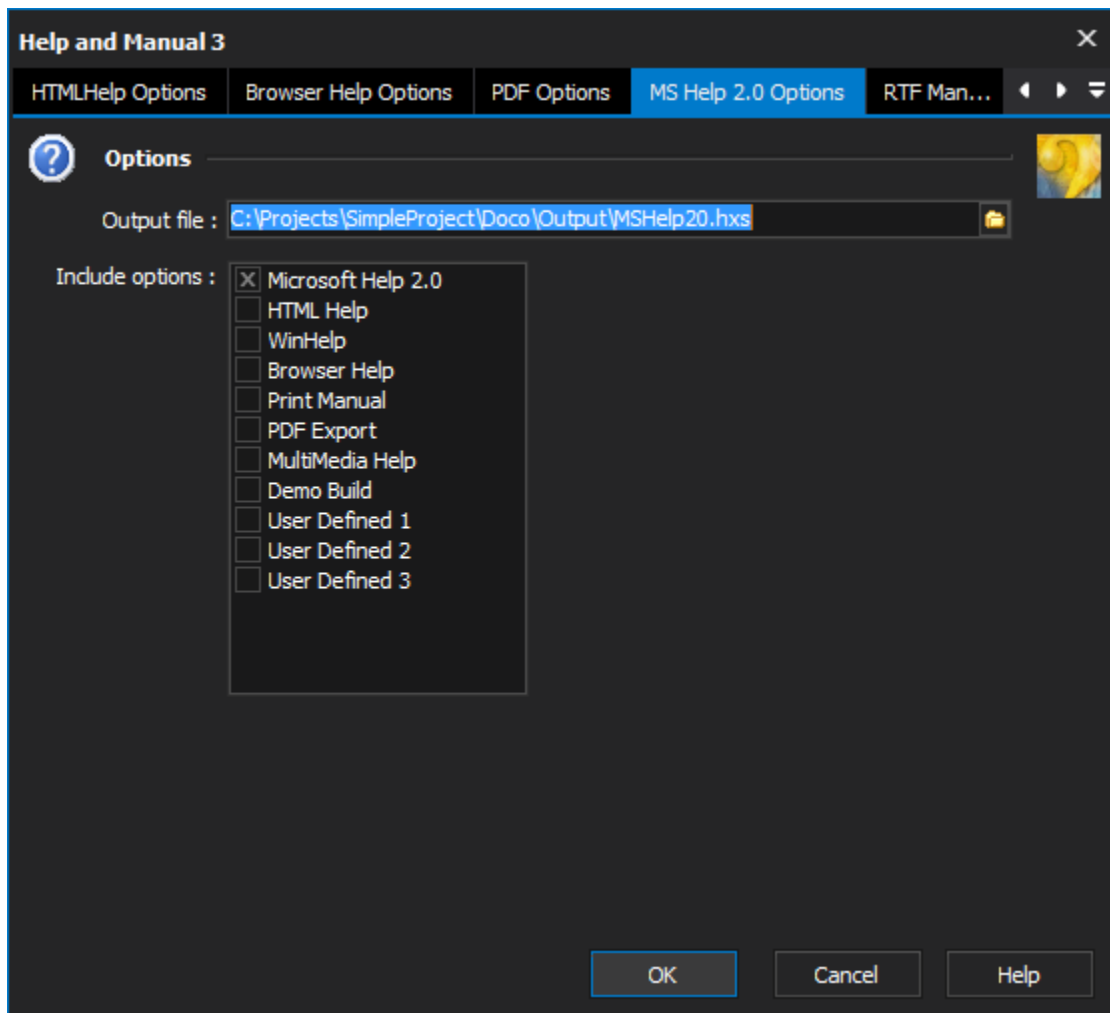
### Include options

Options from the Help & Manual project to include when generating the PDF output. All option groups will be presented from the Help & Manual project. Ones that don't appear can be added by using the "Add" button and typing the name of the option set.

### Template file

The template file to use when generating the PDF help file. Leave blank to use the options specified in the Help & Manual project and include options selected.

## MS Help 2.0 Options



## Options

### Output file

The MS Help help file to generate from the Help & Manual project. The full path and filename should be specified.

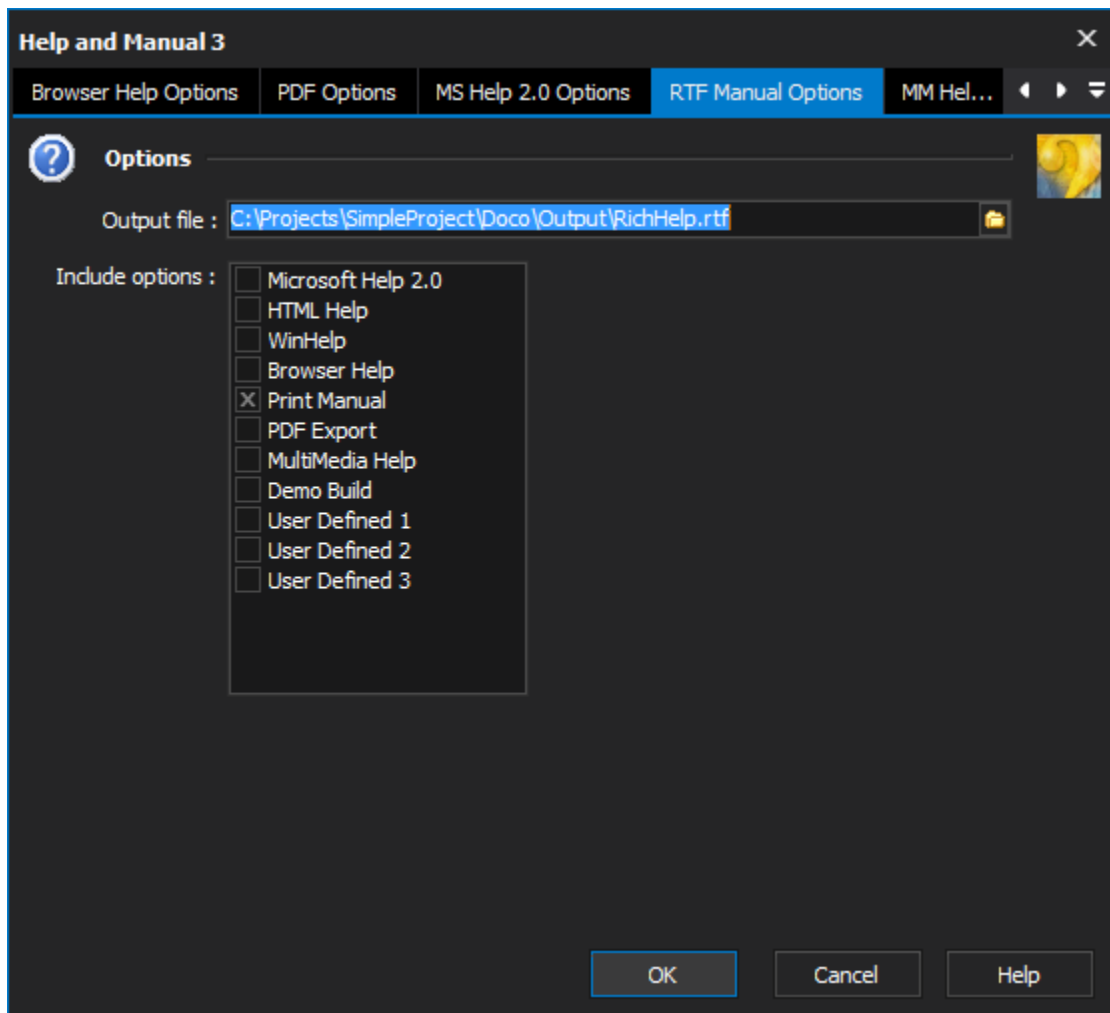
### Include options

Options from the Help & Manual project to include when generating the MS Help 2.0 output. All option groups will be presented from the Help & Manual project. Ones that don't appear can be added by using the "Add" button and typing the name of the option set.

### Skin file

The skin file to use in generating the MS Help. If not specified the values set in the project file will be used instead.

## RTF Manual Options



## Options

### Output file

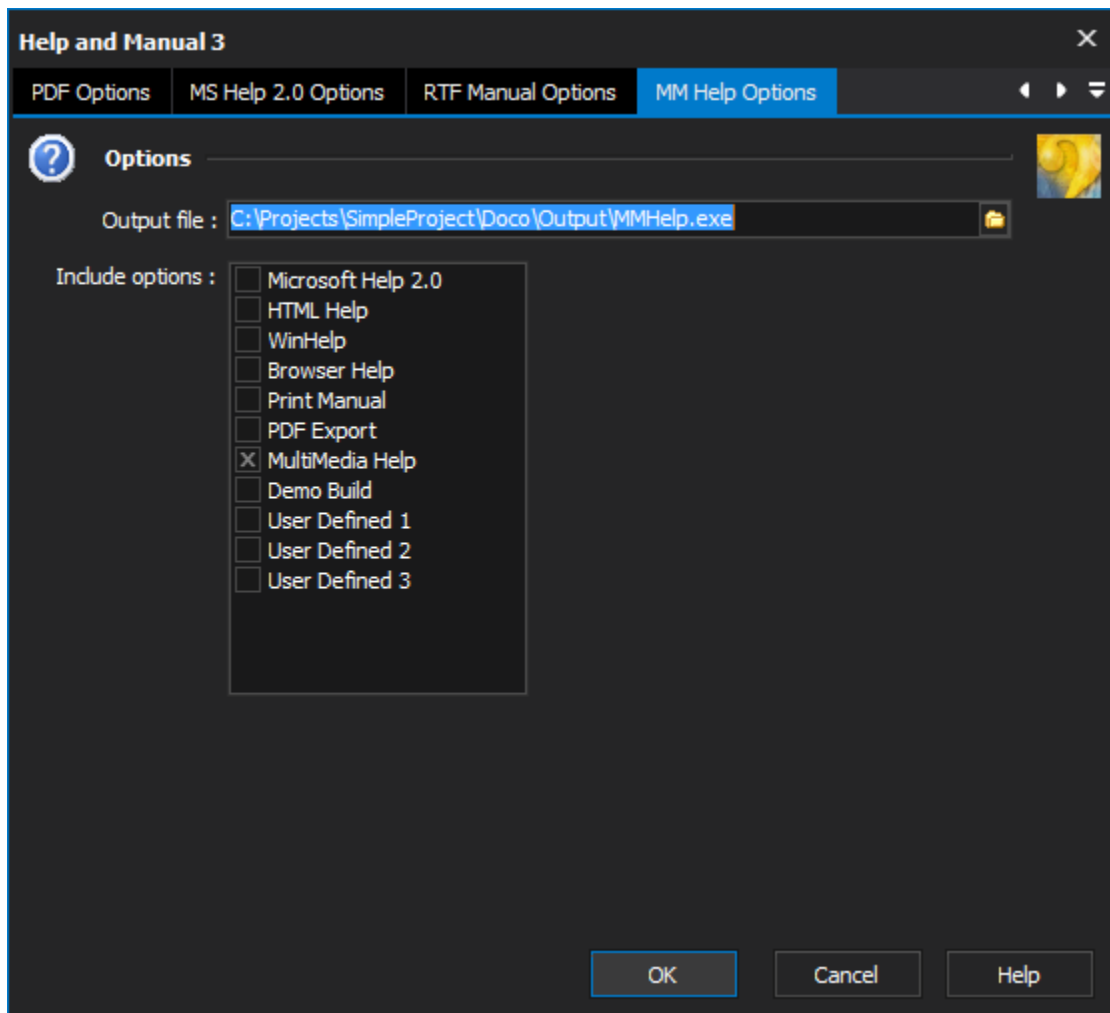
The RTF help file to generate from the Help & Manual project. The full path and filename should be specified.

### Include options

Options from the Help & Manual project to include when generating the RTF output. All option groups will be presented from the Help & Manual project. Ones that don't appear can be added by using the "Add" button and typing the name of the option set.

## MM Help Options





## Options

### Output file

The MM help file to generate from the Help & Manual project. The full path and filename should be specified.

### Include options

Options from the Help & Manual project to include when generating the MM help output. All option groups will be presented from the Help & Manual project. Ones that don't appear can be added by using the "Add" button and typing the name of the option set.

## ePub Help Options

## Options

### Output file

The ePub help file to generate from the Help & Manual project. The full path and filename should be specified.

### Include options

Options from the Help & Manual project to include when generating the ePub help output. All option groups will be presented from the Help & Manual project. Ones that don't appear can be added by using the "Add" button and typing the name of the option set.