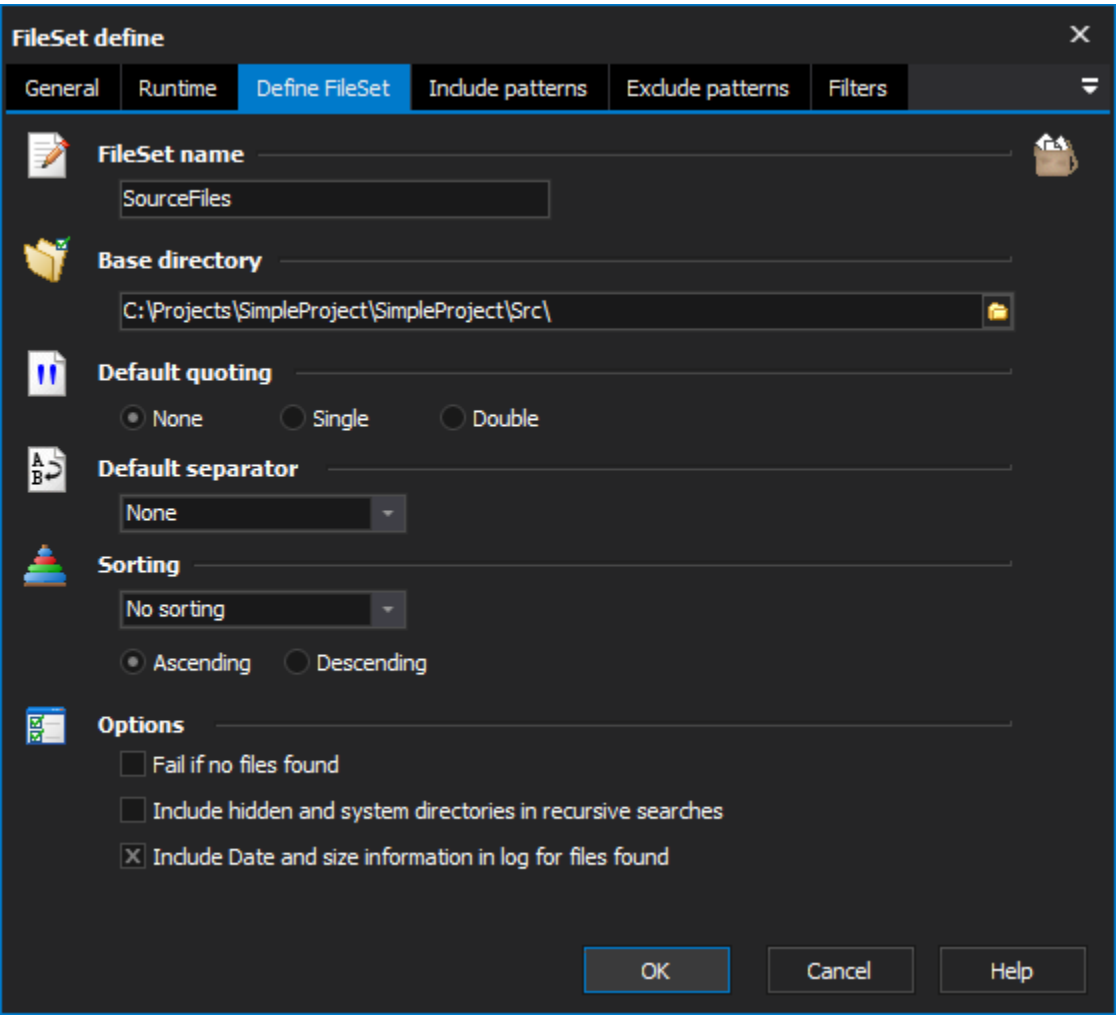


# FileSet Define Action

The FileSet Define action is used to create a new FileSet.

On this page:

## Define Fileset



The Fileset Define action has the following properties:

### Fileset Name

The name the FileSet will be referred to in other actions, script, and action fields

### Base Directory

The root directory where the search for files will be based

### Default Quoting

The default quoting style

### Default Separator

The default separator style used when outputting more than one file

## Sorting

Choose how the files found will be sorted:

**No sorting** - The files in the FileSet are returned in the order they were found (fastest)

**File name (natural)** - sort order similar to how Windows Explorer sorts files (not case sensitive and numbers are treated as such)

**File name (ASCII)** - basic ASCII sorting of file names

**File size** - sorted according to the size of the files

**File date** - sorted according to last modified date/time

### Ascending

### Descending

## Options

### Fail if no files found

The action will fail if no files are added to the FileSet

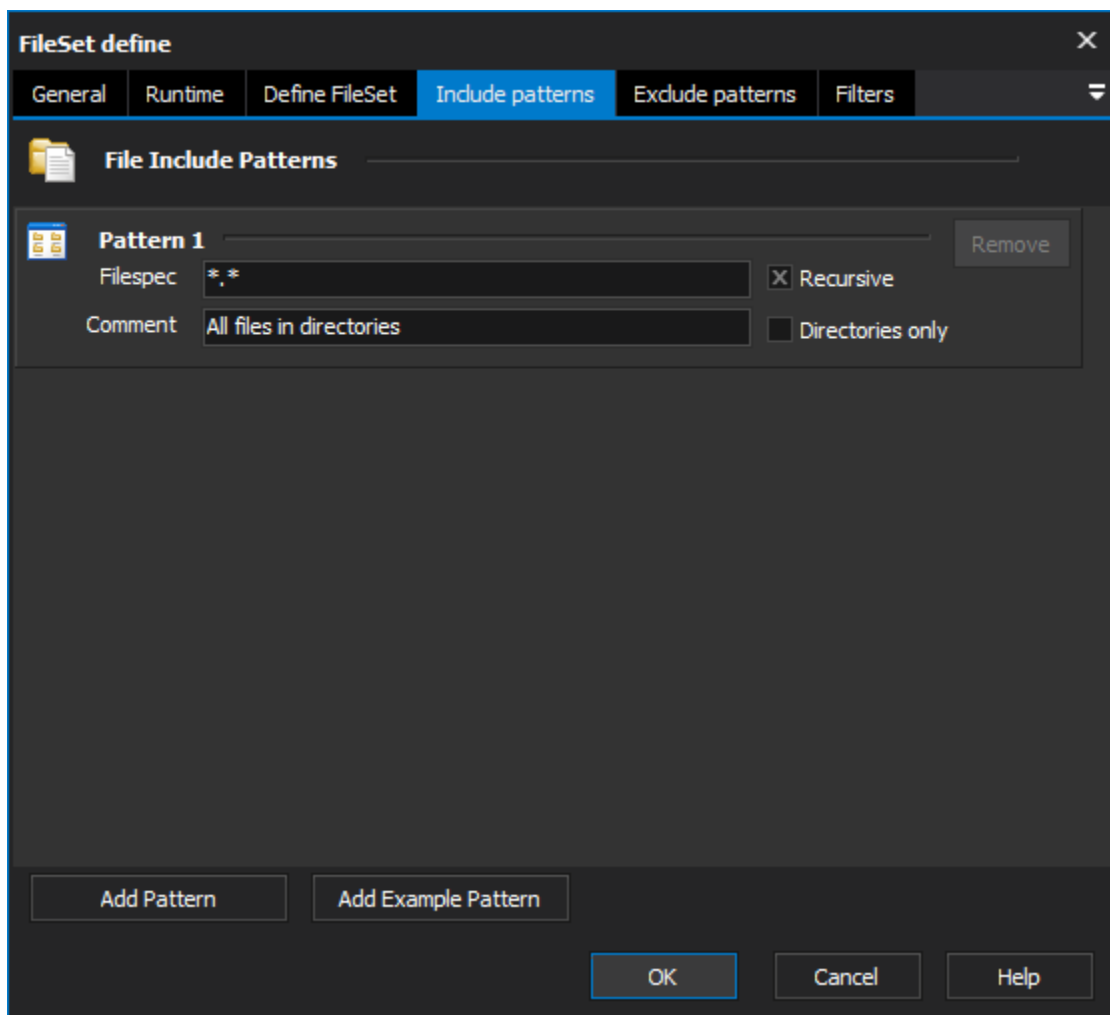
### Include hidden and system directories

By default these directories aren't searched in recursive searches

### Include Date and Size information in log for files found

When the action runs it reports all files found, this option includes the file size and modified date in the output

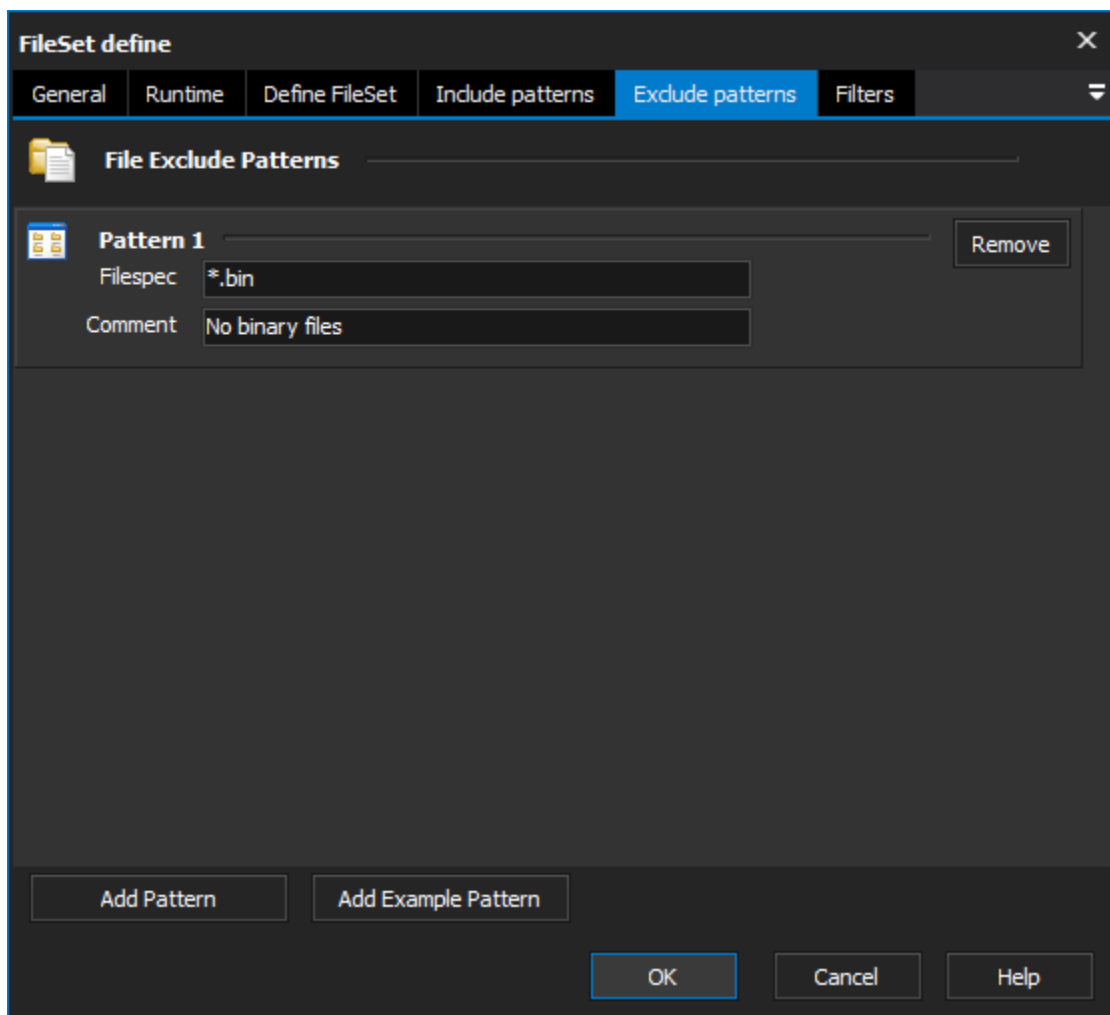
### Include patterns



## File include patterns

A list of patterns which will be used to find files. For more information refer to [FileSet Patterns](#).

## Exclude patterns



## File exclude patterns

A list of patterns used to exclude files. For more information refer to [FileSet Patterns](#).

## Filters

FileSet define

General

Runtime

Define FileSet

Include patterns

Exclude patterns

Filters

File filters

Filter 1

Select files that are of a certain size

Remove

Less than

Equal to

More than

Size 

10

 in units 

Megabytes (MB)

Filter 2

Select files that match certain attributes

Remove

Attributes 

ReadOnly

System

Hidden

Archive

Files must not be ReadOnly and System and Hidden and Archive

Add Filter

OK

Cancel

Help

## File filters

A list of filters used to refine the selection of files based on different criteria. For more information see [FileSet Filters](#).