

Tray Icon

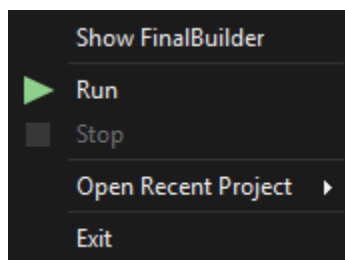
System Tray

FinalBuilder can optionally show in the System Tray:



System Tray Context Menu

The FinalBuilder Tray Icon provides the following menu on Right-Click:



Show FinalBuilder [<project>]

This will restore FinalBuilder if it is minimised. The current open project name is shown in brackets.

Run <project>

This will start the build.

Stop

Stops the build.

Open Recent Project

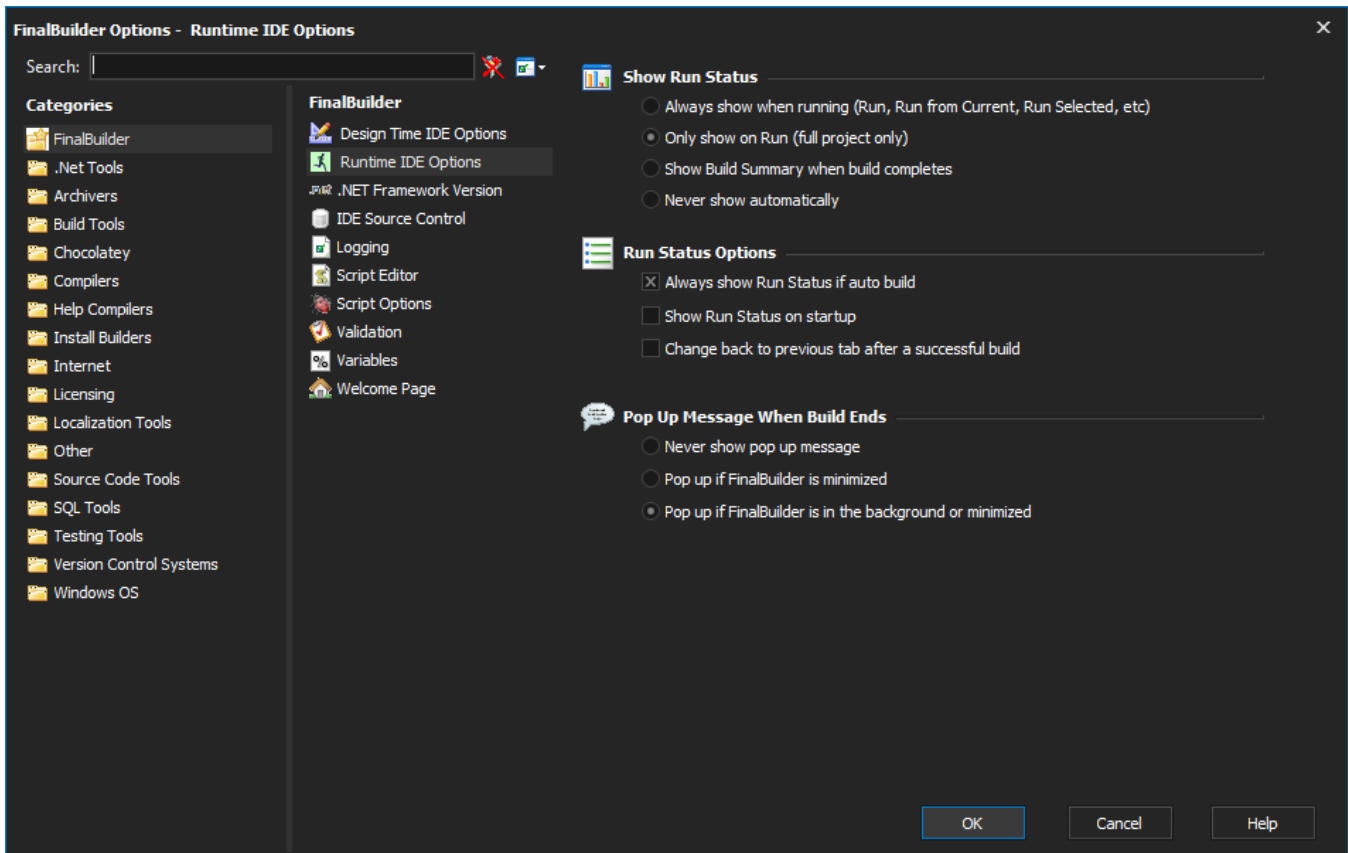
This allows you to open a project from the MRU (Most Recently Used) list of FinalBuilder projects.

Exit

Closes FinalBuilder.

System Tray Settings

To change the System Tray settings:



Always show in System Tray

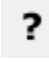
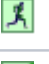




The tray icon will show at all times, regardless of the windows state (Minimised, Maximised, etc)

Minimize to System Tray

When minimised, FinalBuilder will not show on the task bar or the task manager, but will show on the system tray. To restore it, double click the tray icon.

System Tray Icon States

The Tray Icon will also display the state of the build:

Icon	Description
 Unknown Attachment	FinalBuilder is currently idle
	Build is currently running
	Build completed successfully
	Build completed with an error
	Build failed validation
	Build is paused