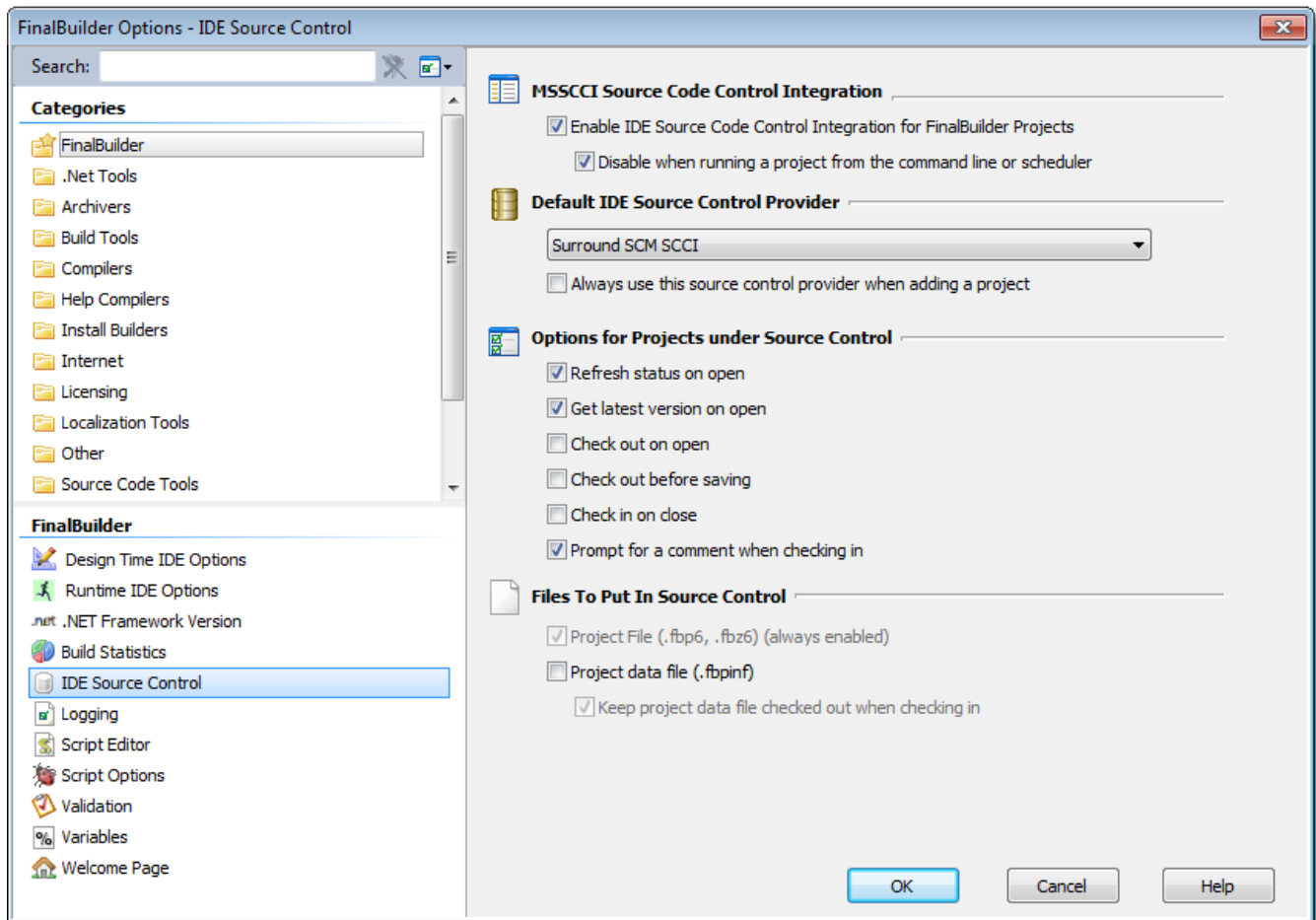


Source Control Options

To edit FinalBuilder's Source Control Integration options, go to Tools menu | Options then click on the FinalBuilder category and the "IDE Source Control" item.



MSSCCI Source Code Control Integration

Enable Source Code Control Integration

If this option is disabled, no SCC integration will be offered. FinalBuilder Projects which are bound to Source Control will have these bindings ignored.

Disable when running a project from the command line or scheduler

If this option is enabled, no SCC integration will be offered when the FinalBuilder IDE is running a project passed in on the command line, or running from the scheduler.



This option only applies to the FinalBuilder IDE. No SCC Integration is available at all when running from the [FBCMD command line application](#). This is because most SCC Integration Provider Plugins display graphical dialogs which FinalBuilder cannot control.

Default Source Control Provider

This option will default to the last source control provider you selected, and is the provider which will be selected the next time the "Choose Provider" dialog is shown. Select "Always use this source control provider..." to skip the "Choose Provider" dialog when binding new projects.

Always use this source control provider when adding a project.

Options for Projects under Source Control

FinalBuilder can be set to automatically perform certain SCC operations when bound projects are opened, saved and/or closed.

Refresh status on open

When selected FinalBuilder will refresh the source control status of opened projects.

Get latest version on open

When selected FinalBuilder will get the latest version of the project from source control when a project is opened.

Check out on open

When selected FinalBuilder will automatically check out a project from source control when its opened.

Check out before saving

When selected FinalBuilder will automatically check out a project from source control just before it is to be saved.

Check in on close

When selected FinalBuilder will automatically check in a project to source control just before it is closed.

Prompt for a comment when checking i

When selected FinalBuilder will automatically prompt for a comment when checking in a change to source control.

Files To Put In Source Control

By default, only Project Files are operated on by the SCC operations. You can optionally include the Project Data File (.fbpinf)

Project data file (.fbpinf)

Enable this option to add project data files to source control when the project file is added.

Keep project data file checked out when checking in

Enable this option to add the project data file to source control, but keep it permanently checked out (checkins will still update the copy in Source Control.)



When using this option, if a new project data file appears is not yet in source control, the FinalBuilder IDE will report that the entire project is not bound to source control. Choose the "[Add Project to Source Control...](#)" command to add the missing file and restore normal SCC status. It should not be necessary to re-enter provider or binding information.



Log Files cannot be automatically added to Source Control. It is recommended that FinalBuilder Log Files are never added to Source Control under any circumstances, as they are likely to impact detrimentally on the Source Control system's performance. Log files are large binary files which change substantially during a run.