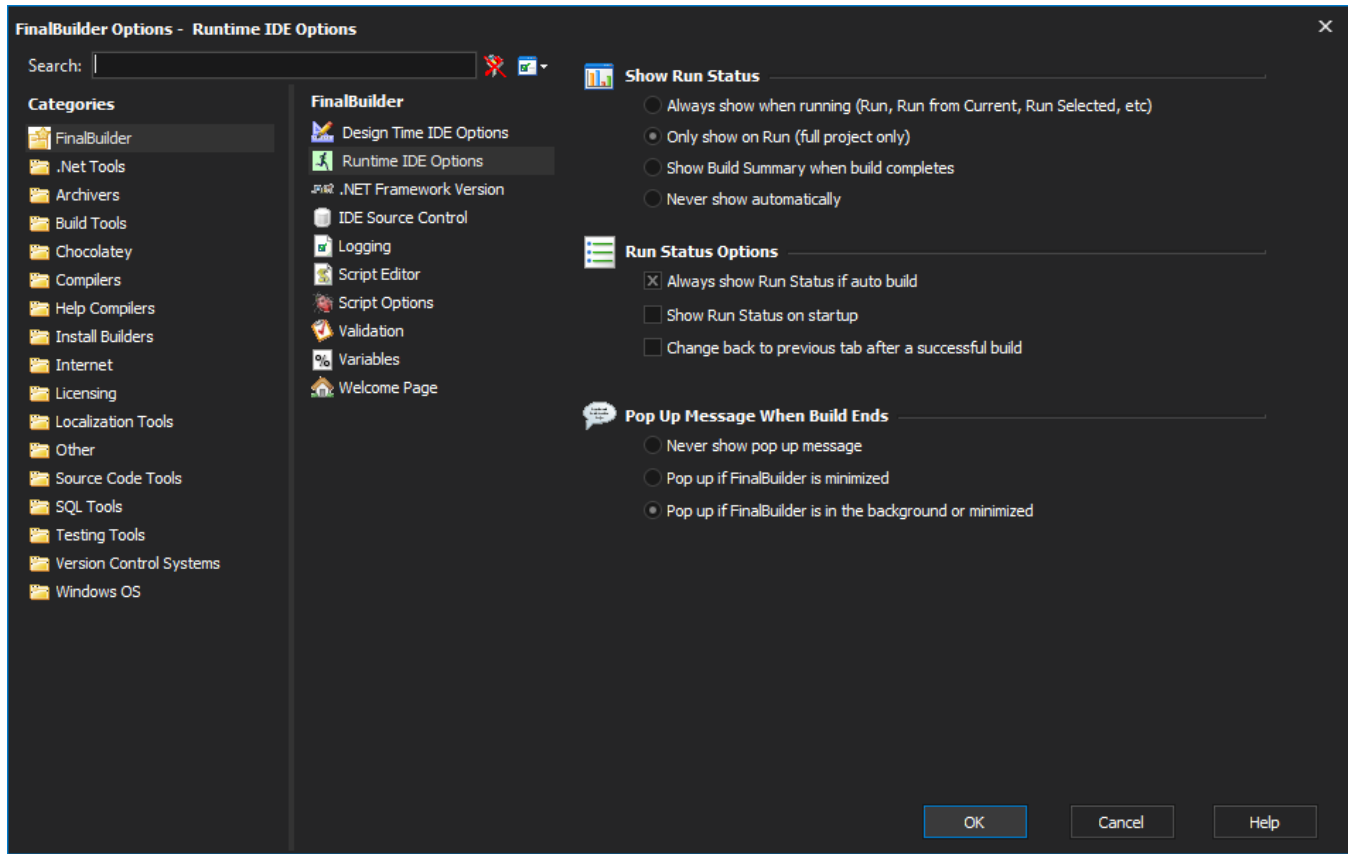


Runtime Options



Show Run Status

Automatically switches to the [Run Tab](#) in certain situations:

- Anytime a build is running
- Only when a build is run from scratch ("Run" menu item)
- When the build completes
- Never

Run Status Options

Always show Run Status if auto Build

If running from the command line, shows the Run Tab.

Show Run Status on startup

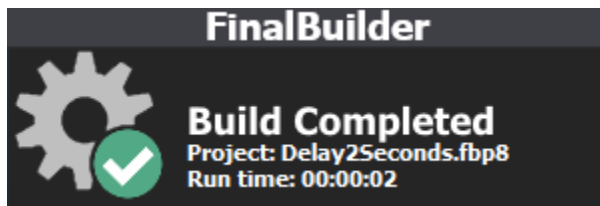
Automatically chooses the Run Tab when FinalBuilder is first run.

Change back to previous tab after a successful Build

If the Run Tab is automatically chosen for a build which completes successfully, returns to the previously selected tab.

Pop Up Message When Build Ends

FinalBuilder can pop up a message notifier above the system tray, whenever a project stops running:



The message disappears when you click on it, or on the FinalBuilder IDE window.

You can choose to popup this message only if the FinalBuilder IDE is minimized, or whenever FinalBuilder is either minimized or in the background (ie not the current focused application.)