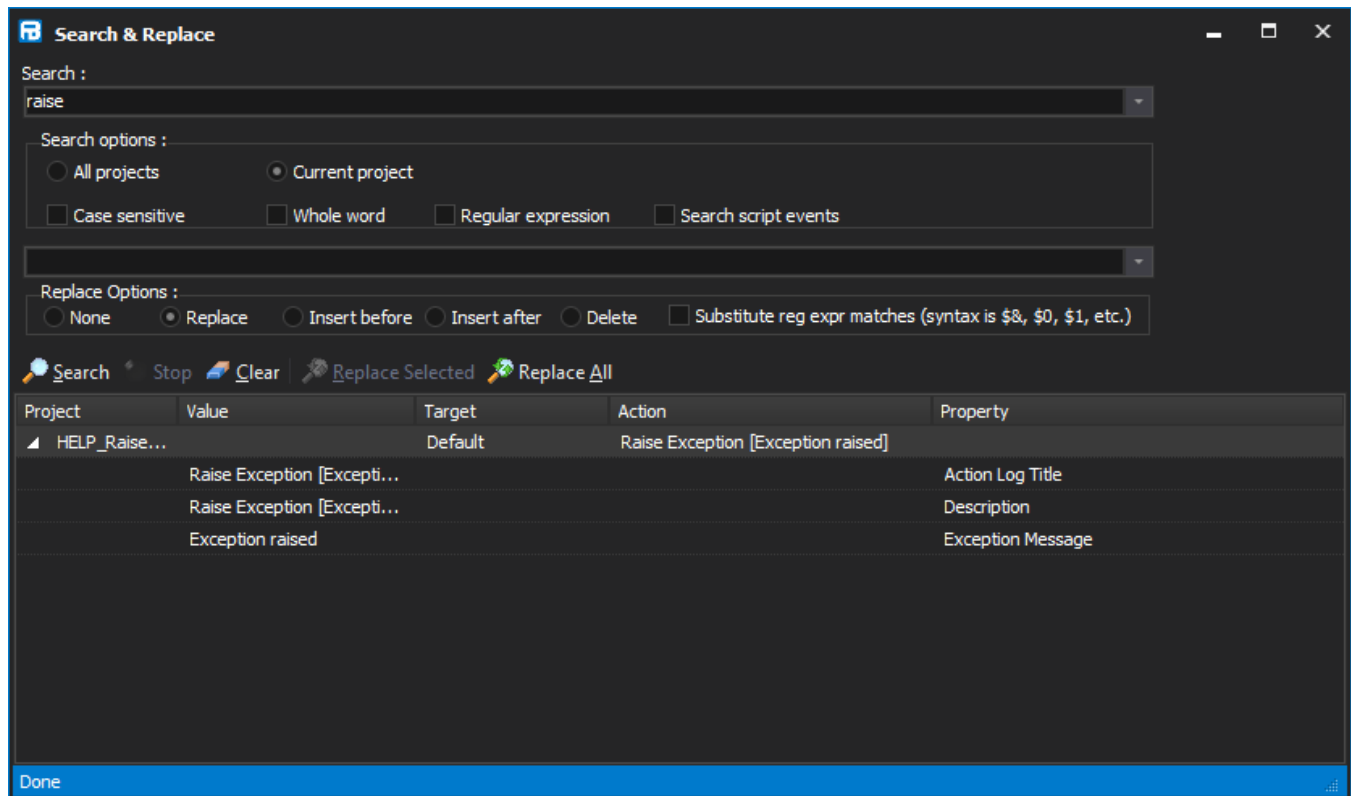


# Search & Replace

The Search & Replace window is a powerful way of finding actions and also changing text in a number of actions at once, regardless of which property the text occurs in. Launch the Search & Replace window from the Edit menu, or with the keyboard shortcut Ctrl+F.



## Searching Options

### Search

Enter the search term to be searched for.

### Case sensitive

If selected, BOOK will not match book.

### Whole word

The search string must not appear as part of another word: book will not match mybook.

### Regular expression

If selected, the search term becomes a [regular expression](#). For example, b.\*k would match book.

### Search Script Events

If selected, the text of script events on actions is also searched. This is important if renaming a variable, for instance.

## Replace Options

To replace matches, first perform a search as above.

### Replace

The string that search matches will be replaced with.

### None

No replacements can be made. Functions as a sort of "safety catch".

## **Replace**

Replacements will be made as normal.

## **Insert before**

Replacement text is added before the search text.

## **Insert after**

Replacement text is added after the search text.

## **Delete**

Search term is replaced with nothing.

## **Substitute regular expression matches**

If using the "regular expression" search option, use this option to allow subexpressions to be substituted

Example of using regular expression substitution:

- Search for "rm (\*.\*)txt" with Regular Expression flag on.
- Replace with "del \$1.xml" with Substitute Regular Expression Matches flag on.
- A match such as "delete file.txt" will be replaced with "del file.xml"

# **Controls**

## **Search**

Press <Enter> or click the Search button to search for your specified term. For each match, the Target, action, property and value are shown. A single action usually matches several times, because the string is contained in the title, the log title, and so forth.

Double-click on a match to highlight the action in the Design & Debug window. You can then use the keyboard shortcuts F3 and Shift+F3 to move forward and backward through matches.

## **Stop**

Aborts the search, if it is taking too long.

## **Clear**

Removes search results.

## **Replace Selected**

Select the matches you wish to replace first. The replacements are made, and the matches removed from the list.

## **Replace All**

All matches are replaced at once.