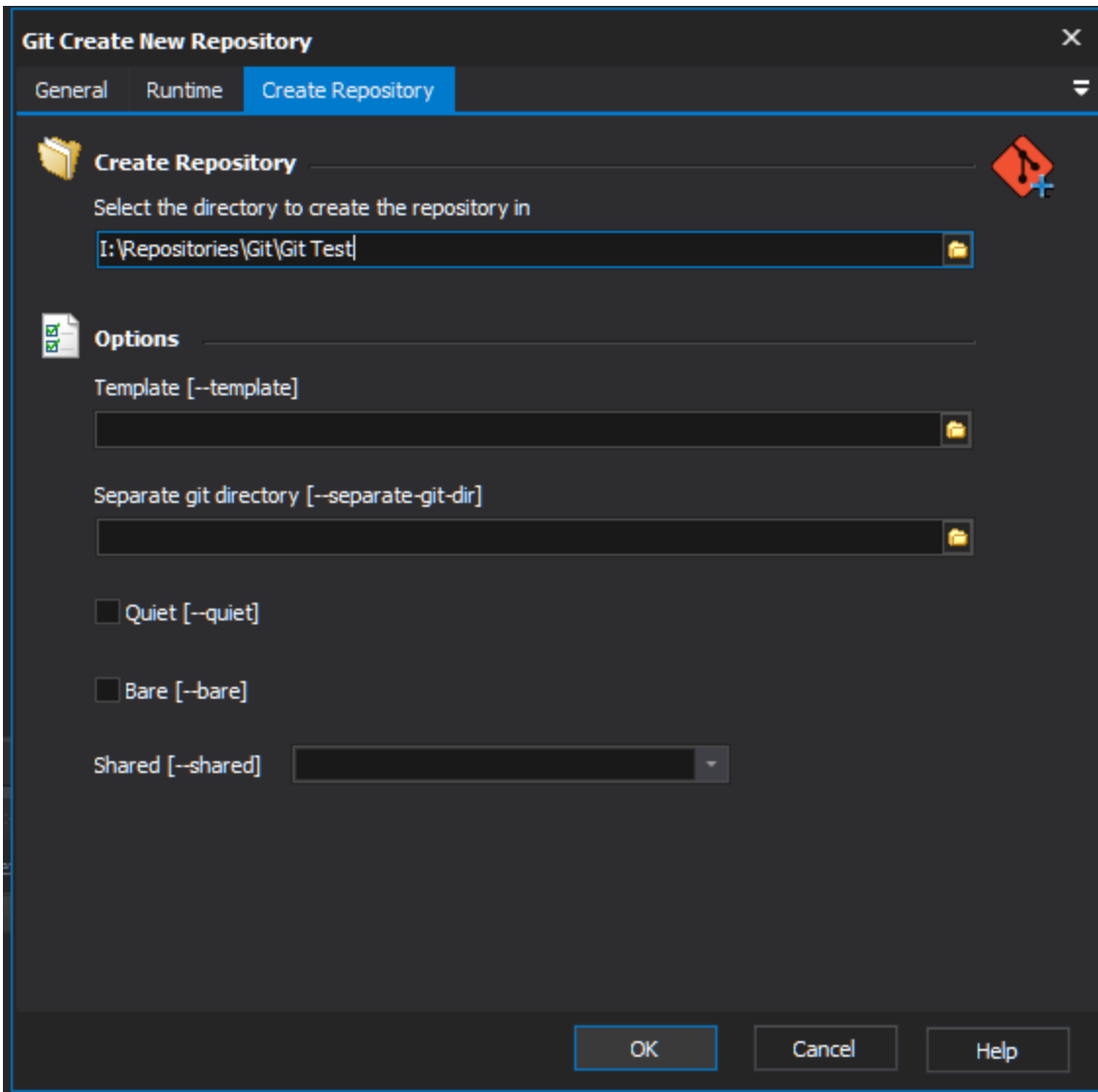


Git Create Repository Action

The Git Create Repository action allows you to initialize a new local repository on your machine or reinitialise an existing local repository. This action is a wrapper for the git command line. For more information on the use and options for this action, refer to the [git init command line documentation](#).

To run this command, you will need to specify the directory to create the local repository in.



You need to select a directory that exists, otherwise the action will fail. If you run this action against a directory that already contains a repository, no information will be lost or re-written. It can be useful to do this in order to pick up recently added templates.

Template - Specify the directory to copy the repository templates from. This overrides the default of <git installation directory>/share/git-core/templates/.

Separate git directory - Specify the directory to create the repository administrative files in instead of the .git subfolder. A text file will be created in the .git subfolder containing this path to act as a symbolic link to the repository. If this is reinitialization, the repository will be moved to the specified path.

Quiet - Suppress output from git.

Bare - Create a bare repository; rather than place the repository administrative files in .git subfolder place all the repository files in the destination working directory.

Shared - This option only has relevance on linux and will be deprecated.

For more information on creating a git repository, see the [git init command line documentation](#).