

Using Output Monitors

Here we use [Output Monitors](#) to solve the problem of finding the most recent file in a directory. In this example, we want to find the most recently changed file in the `c:\builds\source` directory. This DOS command lists the files in order from oldest to newest: "`dir /b /od /a-d c:\builds\source*`".

The output is as follows:

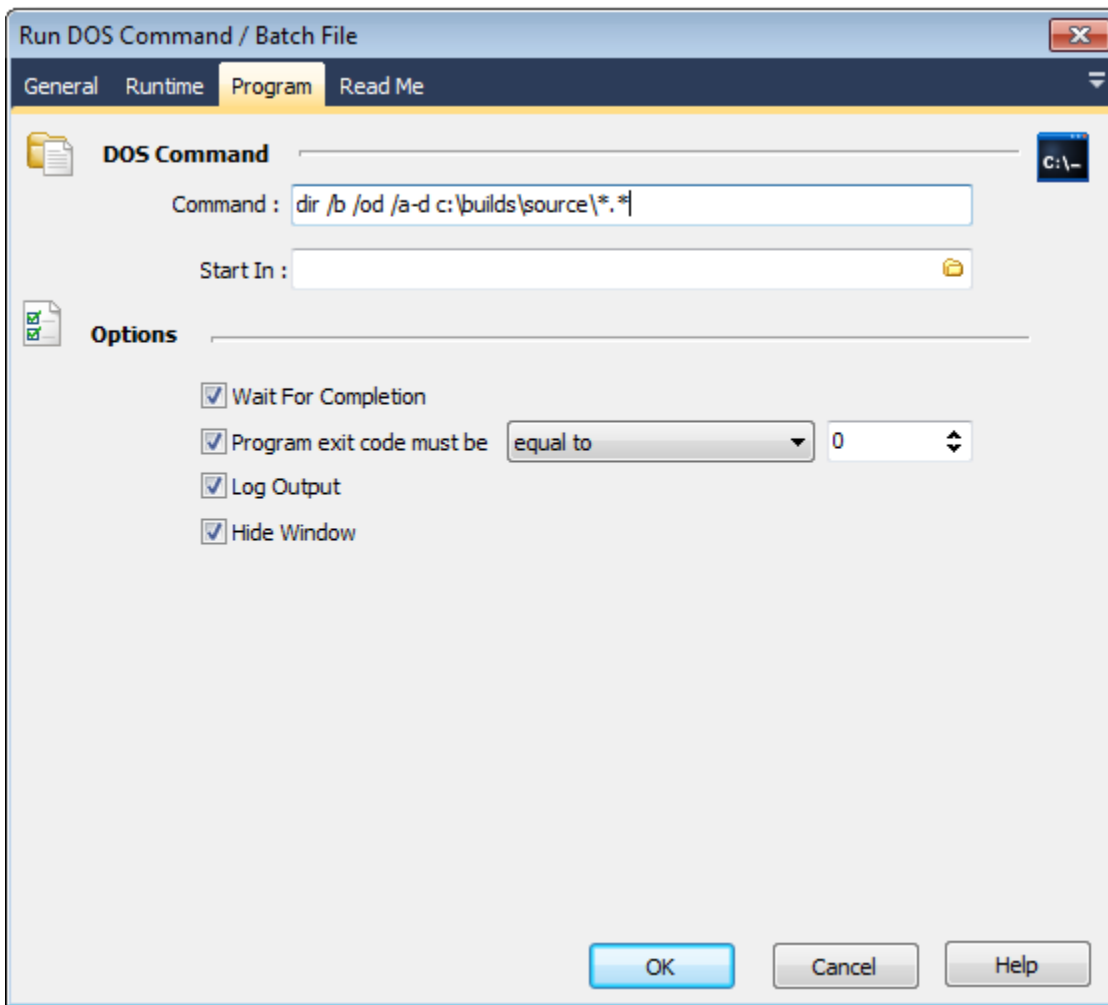
```
LOGOSTRS.PAS
LOGOMAIN.PAS
ABOUT.PAS
hello.pas
BBXAbt.pas
bbxmain.pas
ttree.pas
logging.pas
servtest.pas
```

Thus, we use an Output Monitor to retrieve the last line of the output.

1. Create a variable

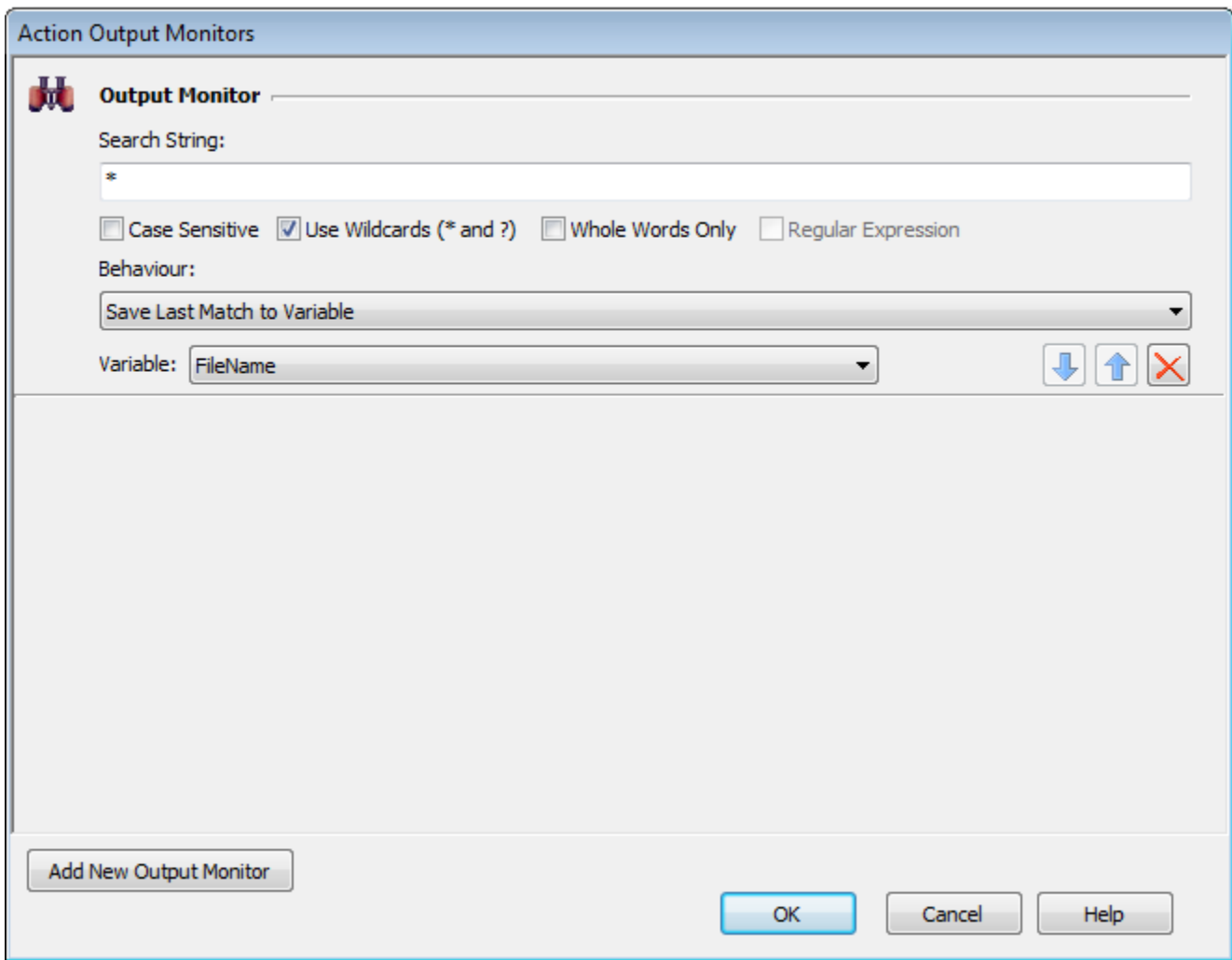
First, [create a variable](#) to hold the name of the most recent file. Call it "filename".

2. Create a [Run DOS Command / Batch File](#) action



3. On the Runtime tab, click the Output Monitors ellipsis button (...)

Click "Add a New Output Monitor" then set the options as shown:




The **Search String** defines what lines of text are selected. In this case, we don't care what the text is - we just want the last one. So the *, combined with **Use Wildcards** matches any text.

The **Behaviour** lets you choose options like failing if the text doesn't match. The **Save Last Match to Variable** option is obviously the appropriate one here.

4. Choose the Variable you created - Filename.

The final result looks like this:

Run



Build Running
 Start time: 17:24:29
 Run time: 00:00:11

Welcome x New Project x.fbz7 x

Description	Enabled	Ignore Failure	Status
Run DOS Co...	<input checked="" type="checkbox"/>	<input type="checkbox"/>	Completed
MessageBox ...	<input checked="" type="checkbox"/>	<input type="checkbox"/>	Running

Main OnFailure

Build Log

Live Log View Show Full Log Show all

Message

- New Project x.fbz7
 - Main
 - Run DOS Command / Batch File [dir /b /
 - Executing external process: C:\W
 - Output Monitor : Matching string for
 - MessageBox [Most recent file] 17:24:29:957

Most recent file

The most recent file is: .MySCMServerInfo

OK

Context	Search:	End Time	Run Time
		17:24:29:957	00:00:00:205

Watches Script Editor Build Log

Version : 7.0.0.229