

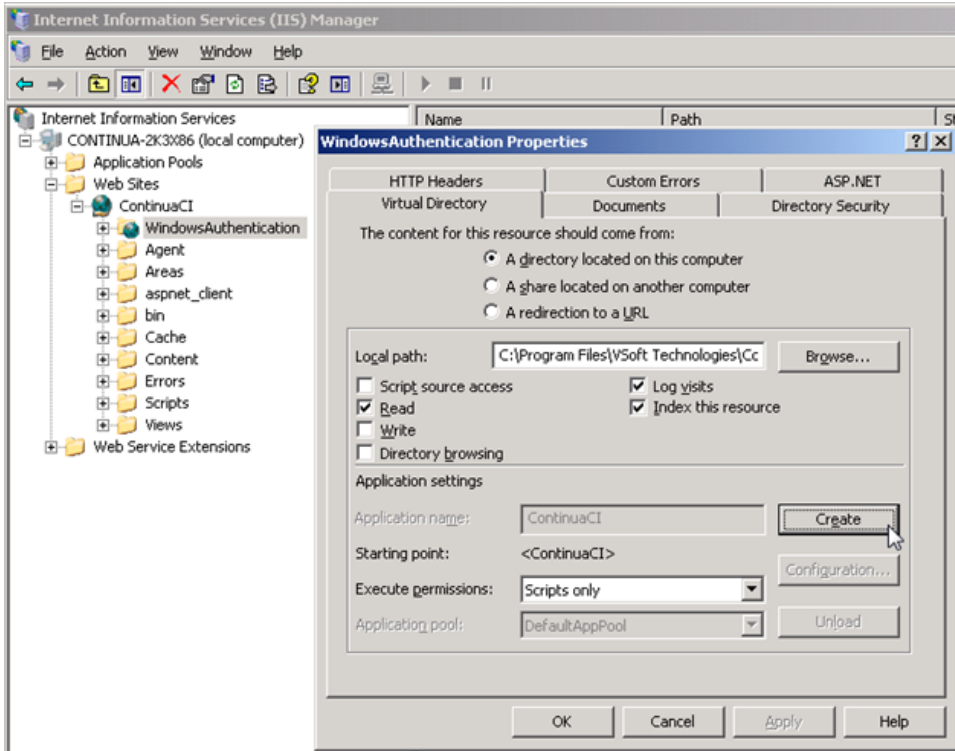
# IIS 6 Configuration

The Continua application includes LDAP and Mixed authentication modes which support using Windows authentication to connect to the web application. Providing the Windows Authentication feature is installed when you run the installer, the Continua website will be automatically configured to support these modes. The Continua application service will also be configured based on the option you choose on the Authentication page of the installer.

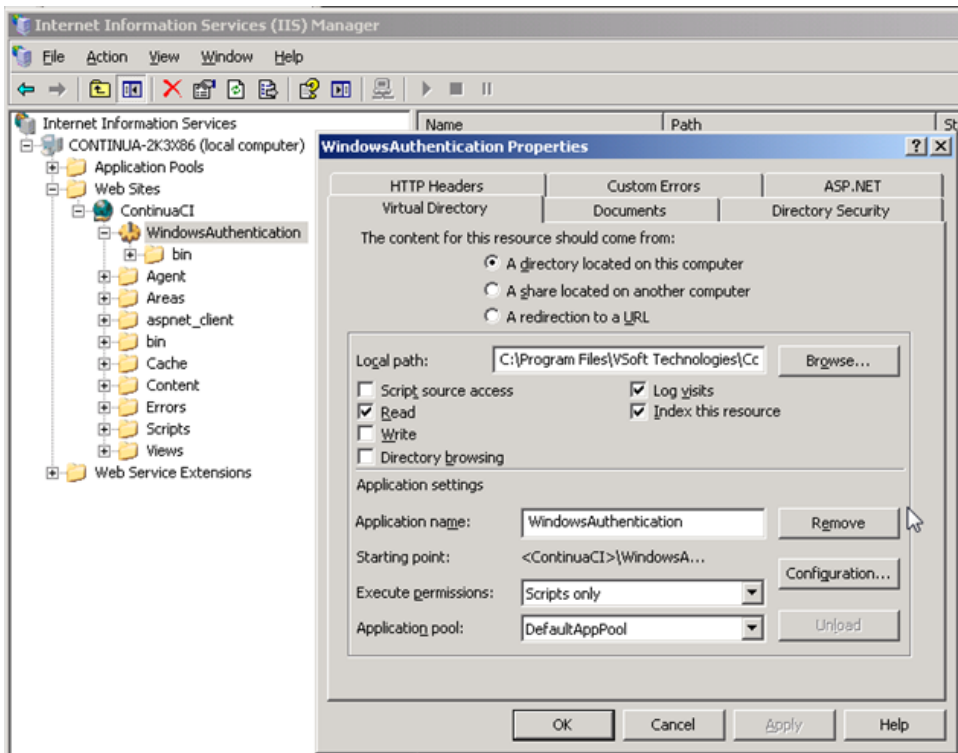
This guide will step you through the manual configuration of IIS 6 and the Continua application to use LDAP and Mixed authentication modes.

## Step by Step

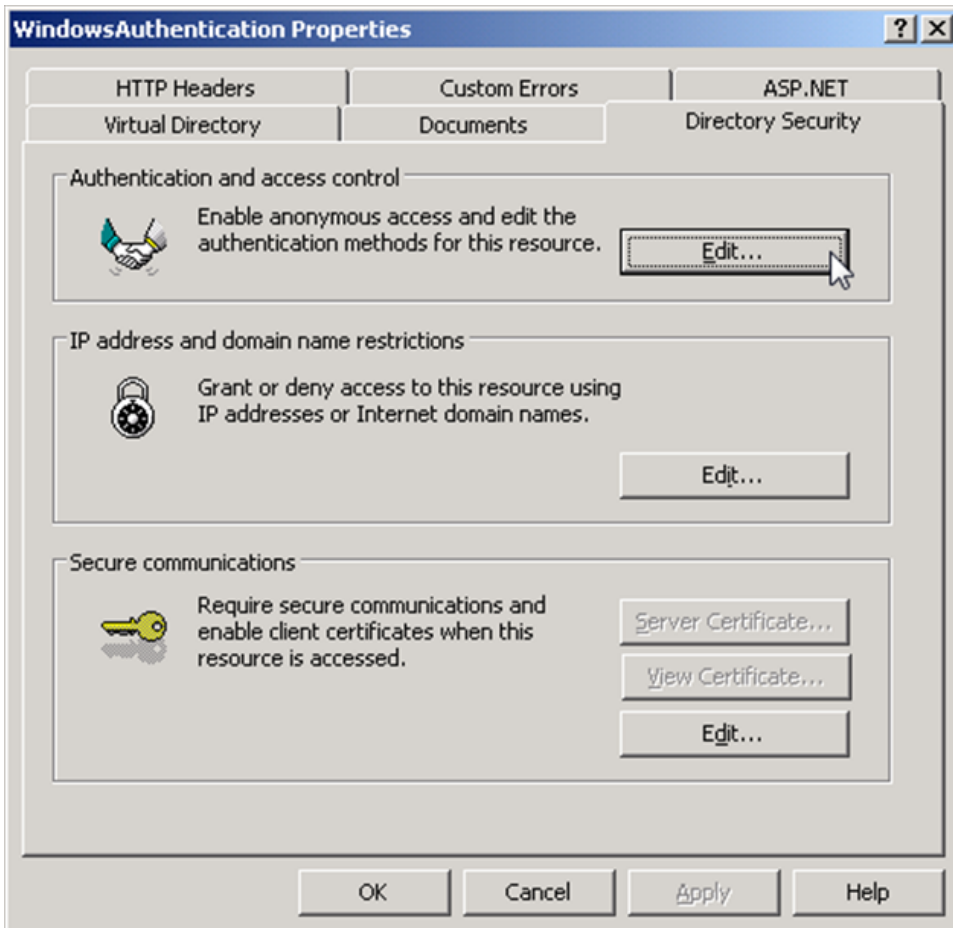
1. Open Internet Information Services (IIS) Manager and navigate to the Continua website created by the installer or manually see [IIS 6 \(Windows 2003\)](#).
2. Right click on the 'WindowsAuthentication' folder located directly under the ContinuaCI website in the 'Web Sites' tree and select 'Properties'. Click 'Create' under 'Application settings'.



The directory will then be converted to an application and the icon for the 'WindowsAuthentication' folder will change to show this.



3. Select the Directory Security tab and click the Edit button for Authentication and access control.



Ensure that Integrated Windows authentication is enabled and anonymous access is not enabled.

**Authentication Methods** [X]

☐ **Enable anonymous access**

Use the following Windows user account for anonymous access:

User name:

Password:

**Authenticated access**

For the following authentication methods, user name and password are required when:

- anonymous access is disabled, or
- access is restricted using NTFS access control lists

☒ Integrated Windows authentication

☐ Digest authentication for Windows domain servers

☐ Basic authentication (password is sent in clear text)

☐ .NET Passport authentication

Default domain:

Realm: