

# Signtool Sign Files Action

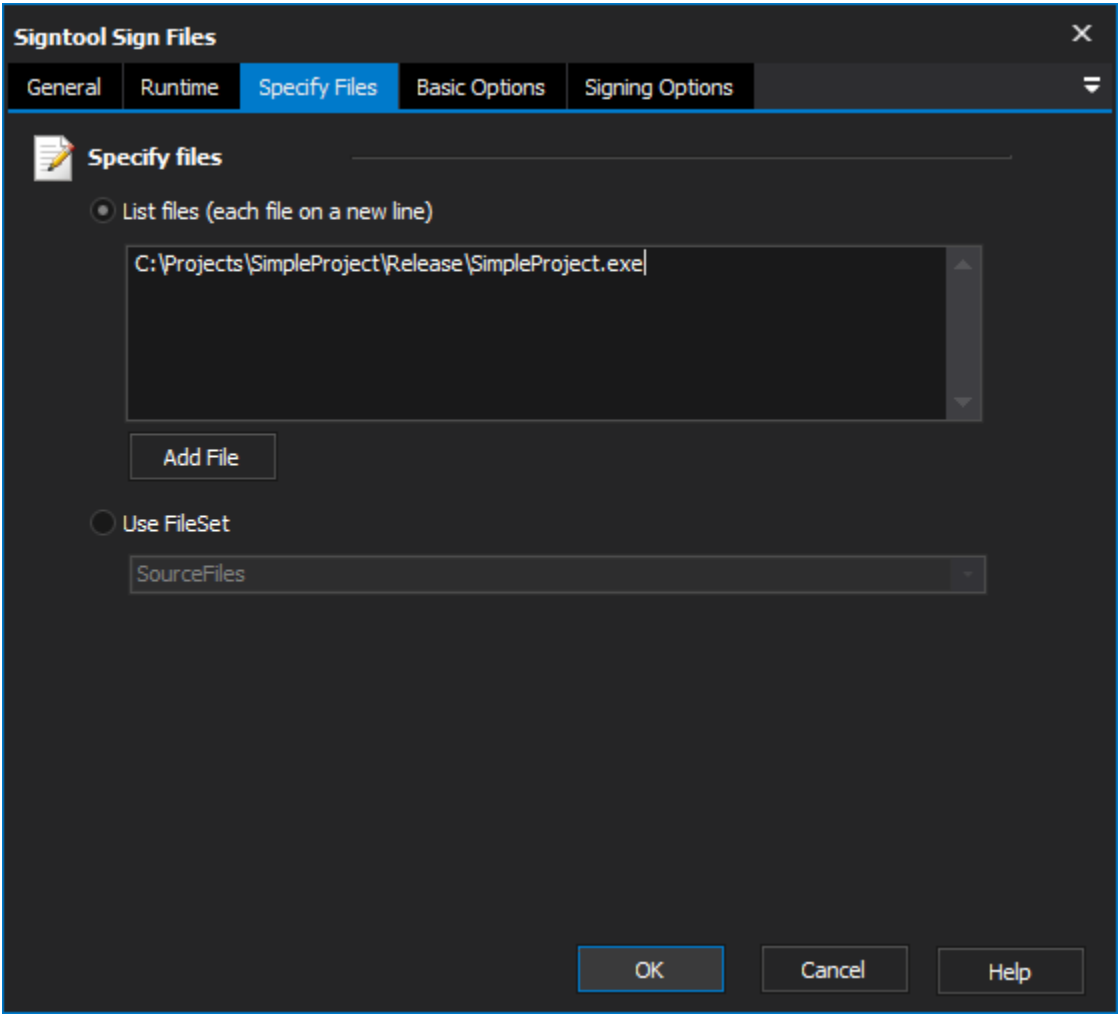
The Signtool Sign Files action allows you to digitally sign files.

From the Specify Files tab specify the files that you wish to sign (each entry on a new line).

Specifies the Enhanced Key Usage that must be present in the signing certificate.

On this page:

## Specify files



## Specify files

### List files

List of files that are to be signed. Each file is included on a separate line.


### Use FileSet

The FileSet that contains all the files to be signed. Note that the FileSet needs to be defined before this action is executed.

## Basic Options

**Signtool Sign Files** [X]

General Runtime Specify Files **Basic Options** Signing Options [v]

 **Options**

☐ Verbose output

☐ Automatically select the best signing certificate

☐ Use Computer store rather than user store

☐ Signed content description ☐ Signed content description (URL)

☐ Use timestamp service URL ☐ Enhanced key usage

☐ Generate page hashes for executable files (where supported)

This option is not supported in versions before .NET v4

OK Cancel Help

## Options

### Verbose Output

Self Explanatory.

### Automatically select the best signing certificate

Self Explanatory.

### Use Computer store rather than User store

Self Explanatory.

### Signed Content Description

A text description of the signed content.

### Signed Content Description (URL)

A URL to the full description of the signed content.

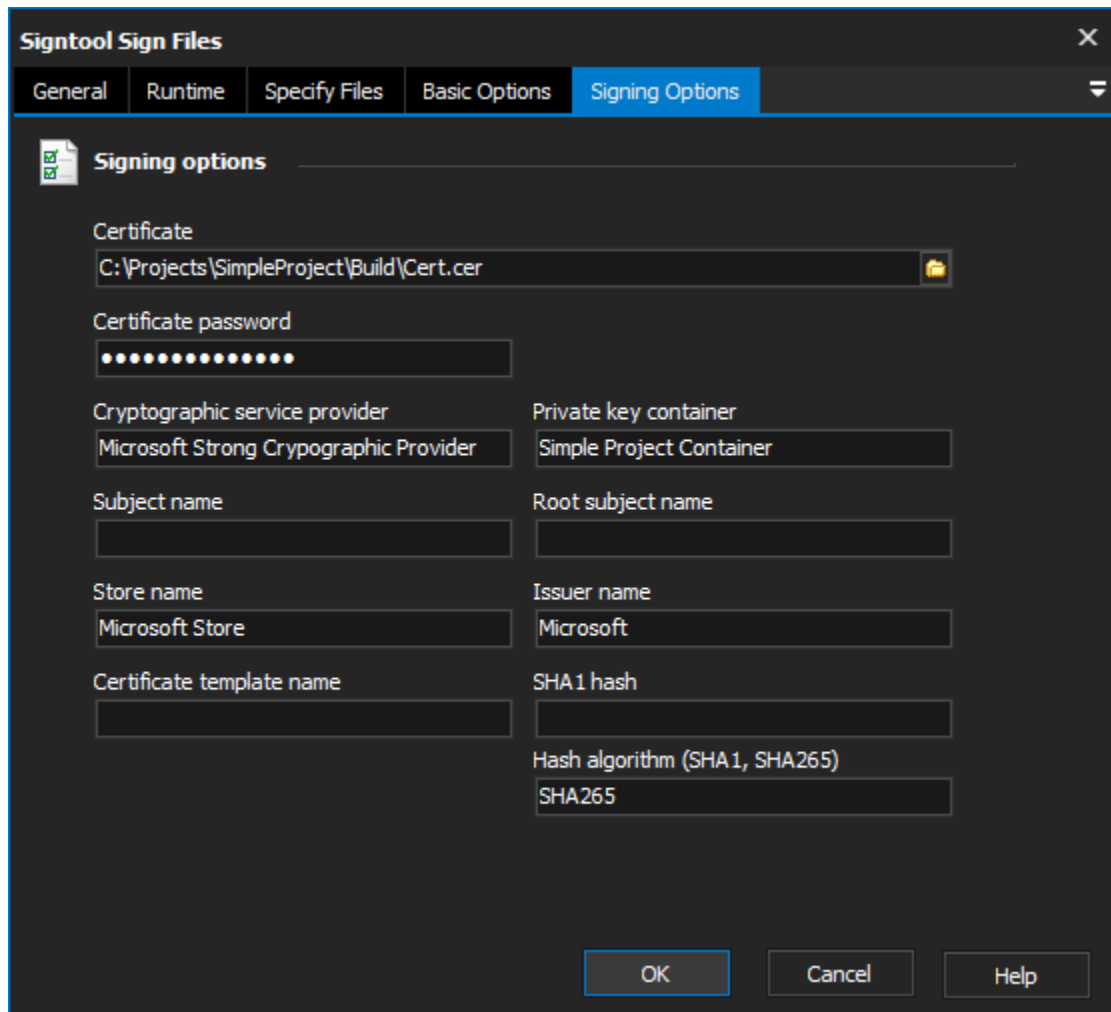
### Use Timestamp Service URL

The URL of the timestamp server.

### Enhanced Key Usage

### Generate page hashes for executable files

## Signing Options



The screenshot shows the 'Signtool Sign Files' dialog box with the 'Signing Options' tab selected. The dialog has a title bar with a close button (X) and a tab bar with 'General', 'Runtime', 'Specify Files', 'Basic Options', and 'Signing Options'. The 'Signing Options' tab contains the following fields:

- Certificate:** A text box containing 'C:\Projects\SimpleProject\Build\Cert.cer' with a browse button (folder icon) to its right.
- Certificate password:** A text box filled with 12 dots.
- Cryptographic service provider:** A text box containing 'Microsoft Strong Cryptographic Provider'.
- Private key container:** A text box containing 'Simple Project Container'.
- Subject name:** An empty text box.
- Root subject name:** An empty text box.
- Store name:** A text box containing 'Microsoft Store'.
- Issuer name:** A text box containing 'Microsoft'.
- Certificate template name:** An empty text box.
- SHA1 hash:** An empty text box.
- Hash algorithm (SHA1, SHA265):** A text box containing 'SHA265'.

At the bottom of the dialog are three buttons: 'OK', 'Cancel', and 'Help'.

## Signing Options

### Certificate

Specify the file to use as the signing certificate. When using a Personal Information Exchange (.pfx) which is protected by a password, use the Certificate Password option to specify the password. If the file does not contain private keys use the Cryptographic Service Provider and Private Key Container options to specify the private keys to be used.

### Certificate Password

The password to use when opening a password protected Personal Information Exchange (.pfx) file.

### Cryptographic Service Provider

The Cryptographic Service Provider that contains the private key container.

### Private Key Container

The private key container name.

### Subject Name

The subject name of the signing certificate.

### Root Subject Name

Specify the subject name of the root certificate that the signing certificate must link to.

**Store Name**

Specify the name of the store to open when searching for the certificate.

**Issuer Name**

Specify the issuer name of the signing certificate.

**Certificate Template Name**

The certificate template name for the signing certificate.

**SHA1 Hash**

Specify the SHA1 hash of the signing certificate.

**Hash Algorithm (SHA1, SHA265)**

The hash algorithm to use when signing the files.