

# Two Environments

A common build script situation is that of developing a build script on one machine (typically a developer machine) and needing it to also run on a second machine (the production machine). Unless the two machines are set up identically, this can be tricky. For centralised control and easier version control, you may wish to use a single shared INI file as follows:

Let's assume that whenever you do a build using the development machine (named John), you want it to take place in "**C:\Builds\Testing**". When you do a build on the production machine (named Build), it takes place on "**J:\Builds\Latest**".

## 1. Create an INI file with the differences

First, create a .ini file in a shared location with the parameters. Give each section the name of the machine it applies to:

```
[Build]
```

```
BuildHome=J:\Builds\Latest
```

```
[John]
```

```
BuildHome=C:\Builds\Testing
```

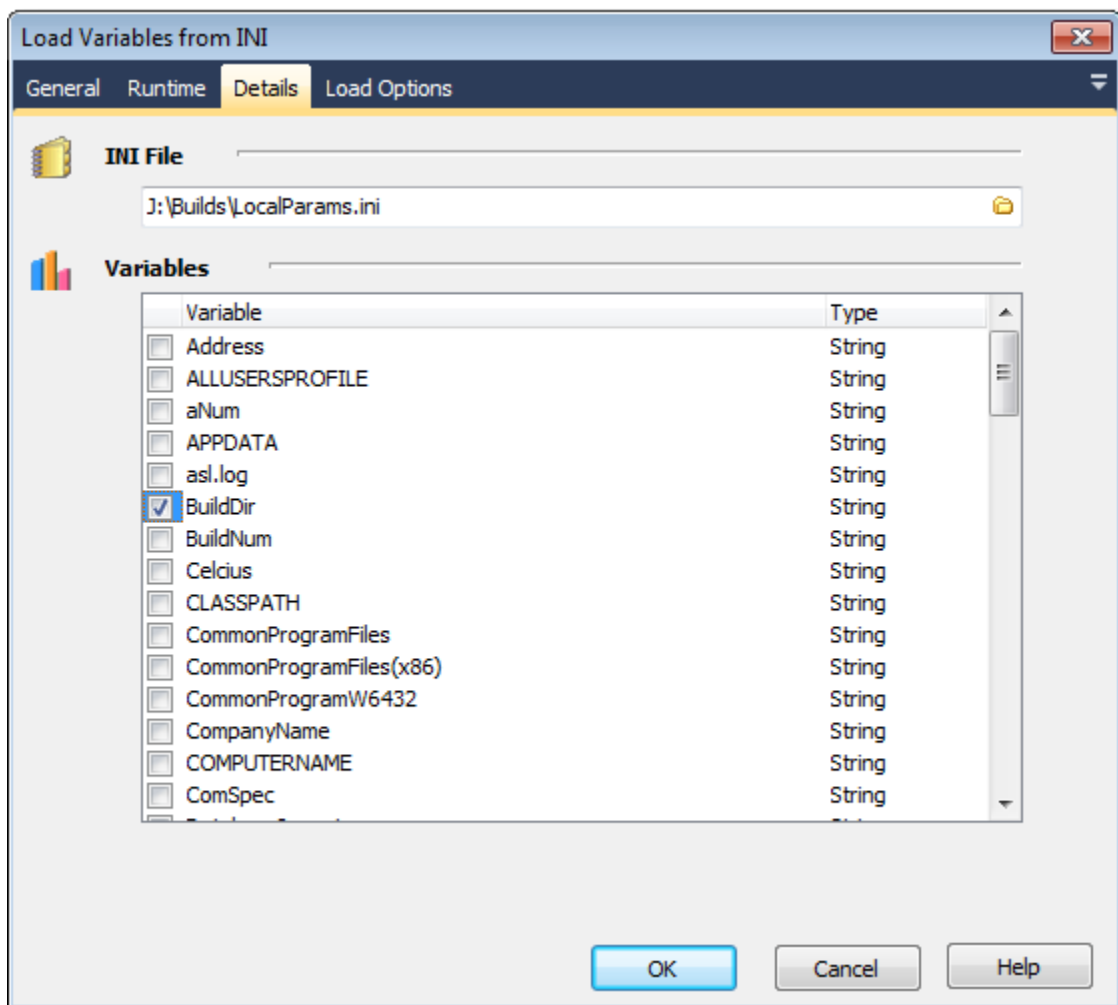
Name the file something like "**LocalParams.ini**".

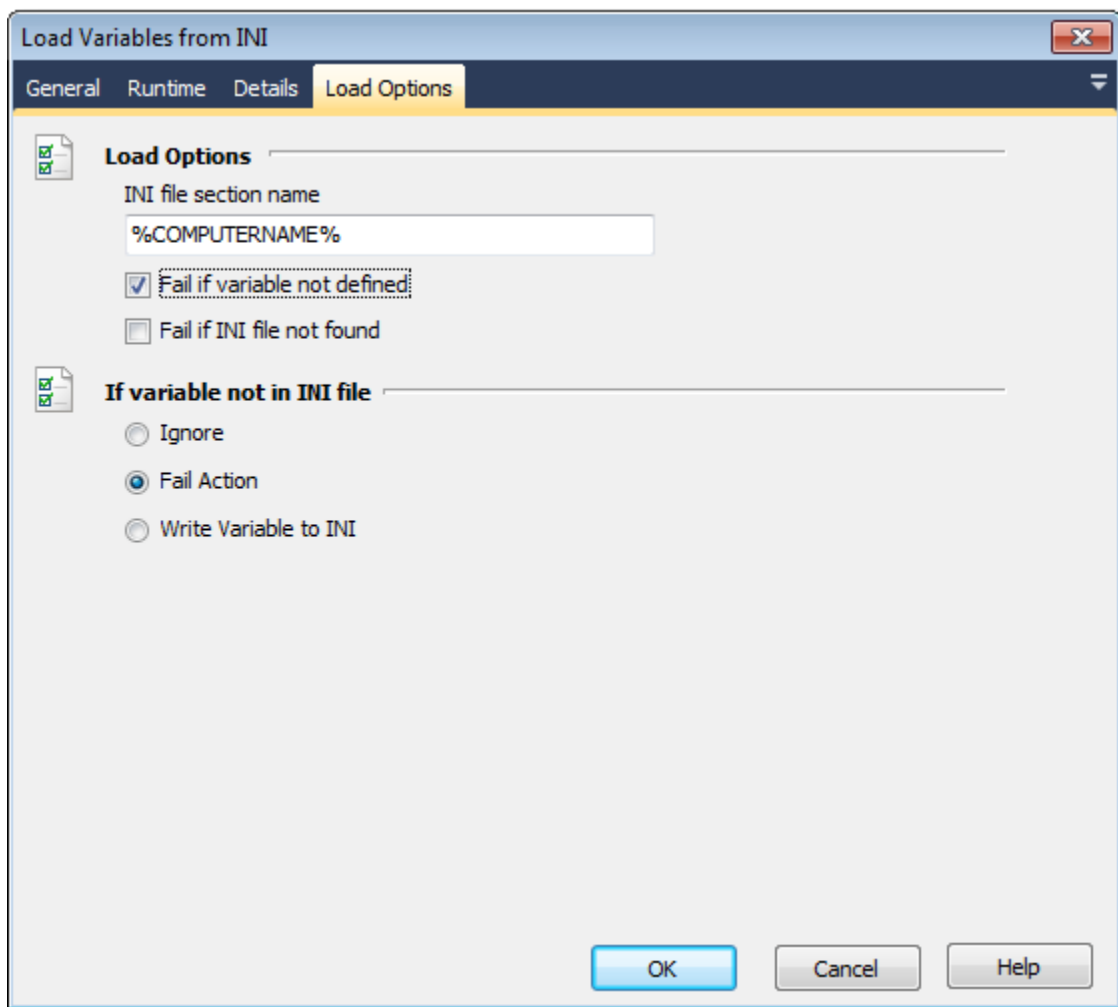
## 2. Make your build depend on these parameters

Define variables with the names you used in the INI file. Update all actions that use these locations to use the variables instead.





## 3. Load the INI file as the first step in the build

At the start of the build, add a "Load Variables from INI" that loads the relevant variables from the INI file. Use the %COMPUTERNAME% variable to load from the right section:





#### 4. The finished product

Description	Enabled	Ignore Failure	Status
 Load Variables from INI [J:\Builds\LocalParams.ini, Variables: BuildHome]	<input checked="" type="checkbox"/>	<input type="checkbox"/>	
 Delete Tree [ %BuildHome% ]	<input checked="" type="checkbox"/>	<input type="checkbox"/>	
 Create Directory [ %BuildHome% ]	<input checked="" type="checkbox"/>	<input type="checkbox"/>	
 Subversion Export	<input checked="" type="checkbox"/>	<input type="checkbox"/>	