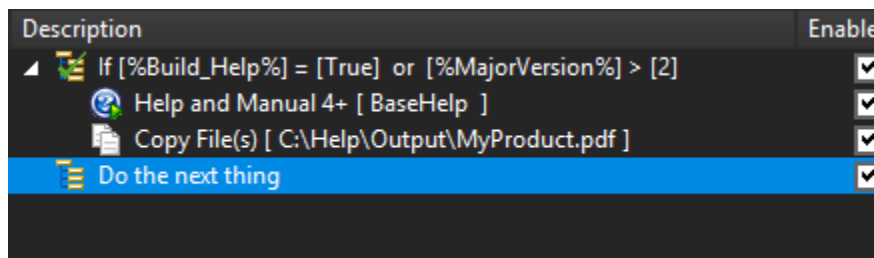


If .. Then Action

This action uses a boolean expression to determine if its child actions should run or not.

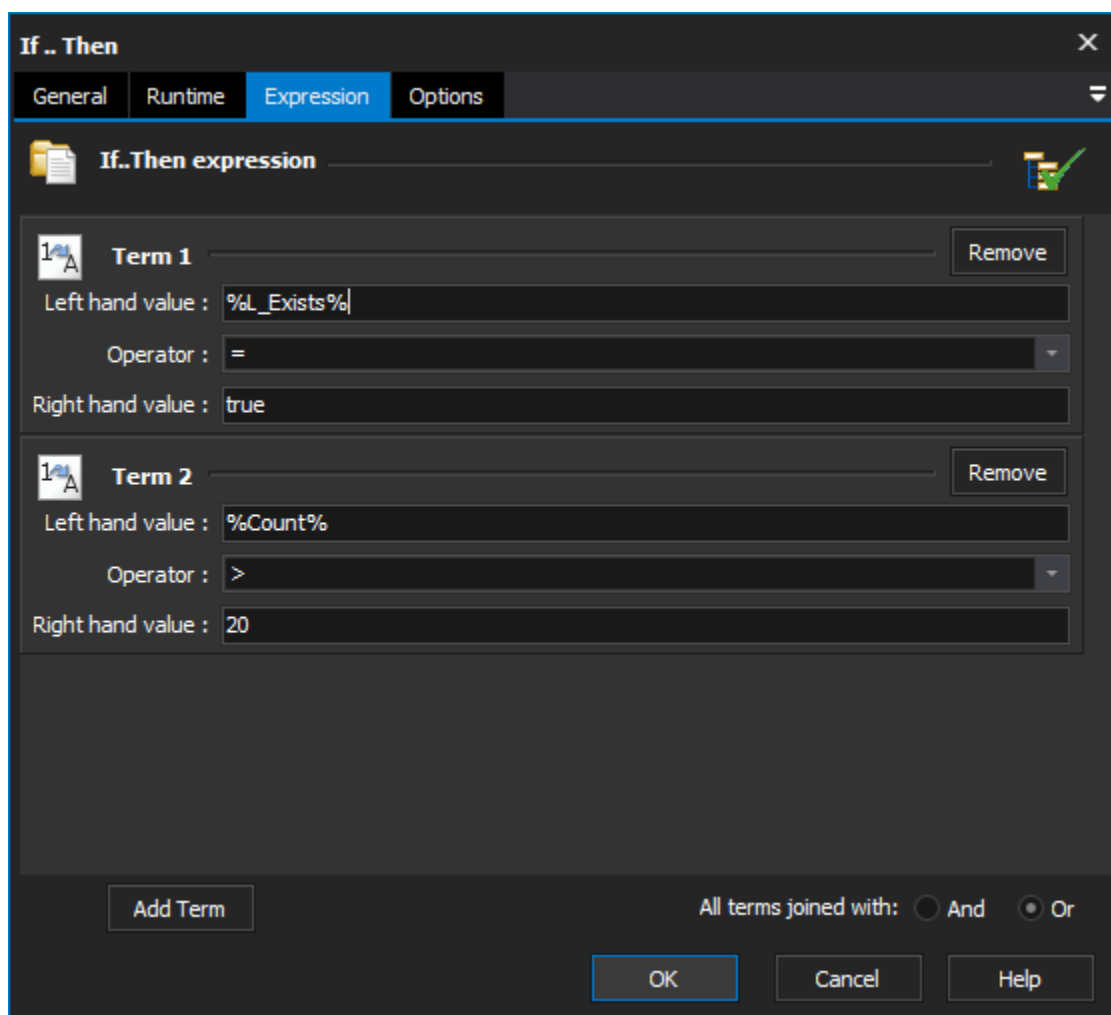


The Help and Manual action and the Copy Files(s) action will only be run if the expression: %Build_Help% = True or %MajorVersion% > 2

The "Do the next thing" action will be run regardless of whether the If..Then action runs it's child actions or not.

Expression

If..Then Expression



Each term is comprised of a left hand side, a right hand size, and a comparison operator. Use %VariableName% syntax to compare the values of variables. String, integer or floating point values can all be compared.

Each expression can have an unlimited number of terms. Click on the "Add Term" button to add a new term. Terms can be joined together with boolean "And" or "Or" directives.

The available boolean operators are:

- Equal =
- Not Equal <>
- Less Than <
- Less Than or Equal <=
- Greater Than >
- Greater Than or Equal >=
- Matches Regular Expression
- Is Substring Of
- Is Not Substring Of
- Is Member of Comma-Separated List
- Is Not Member of Comma-Separated List



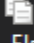

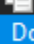

Options

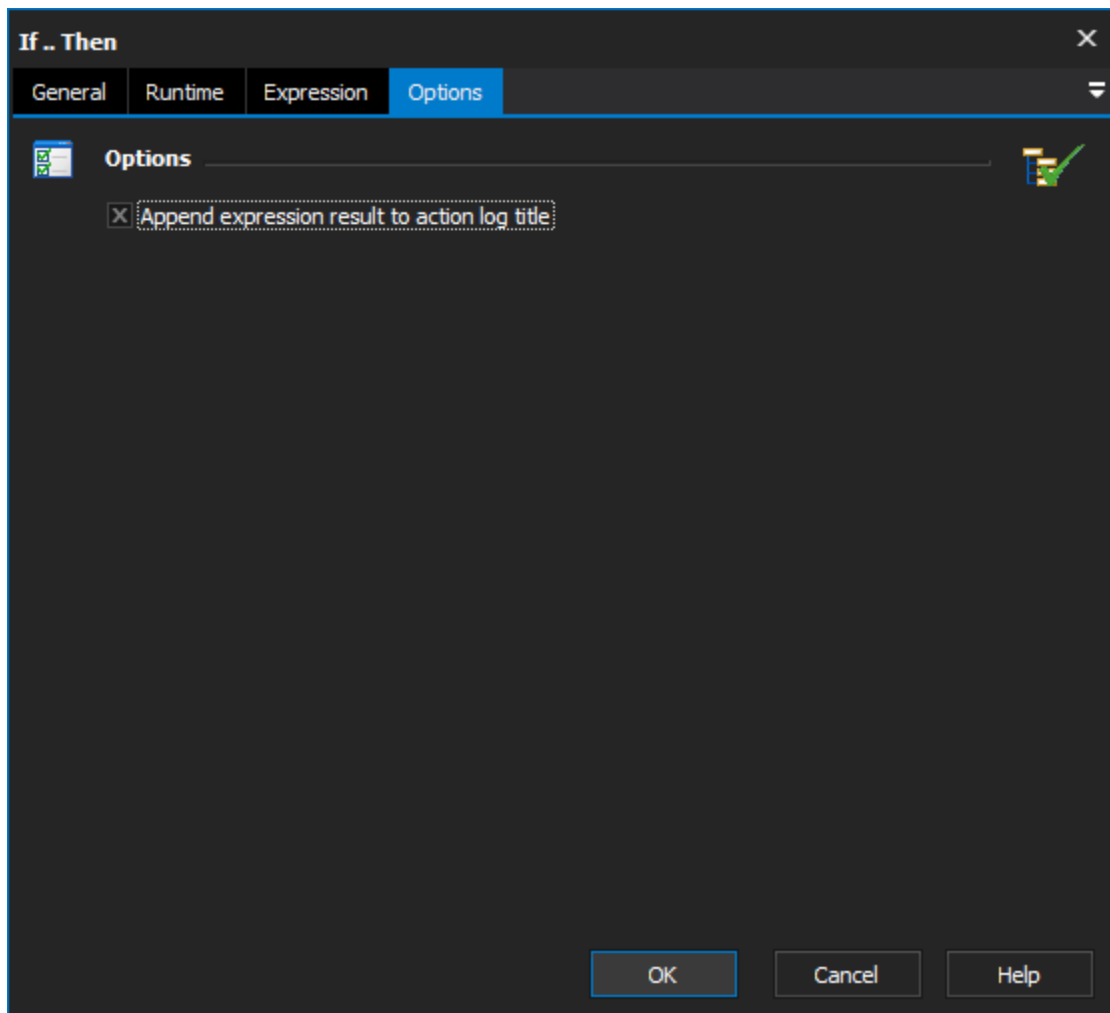
Append expression result to action log title

Example

The following If... Then action will execute its children when variable J is equal to 4, 5, 6, 7 or 9:

You can also use If...Then with the Else action, to provide an alternative set of actions to run. See the [Else Action](#) for details.

Description	Enabled
 If [%Build_Help%] = [True] or [%MajorVersion%] > [2]	<input checked="" type="checkbox"/>
 Help and Manual 4+ [BaseHelp]	<input checked="" type="checkbox"/>
 Copy File(s) [C:\Help\Output\MyProduct.pdf]	<input checked="" type="checkbox"/>
 Else	<input checked="" type="checkbox"/>
 Copy File(s) [C:\Help\CurrentOutput\MyProduct.pdf]	<input checked="" type="checkbox"/>
 Do the next thing	<input checked="" type="checkbox"/>



The "Append expression result to Action Log Title" will show the result (True or False) as part of the action's log title when it runs. The result is appended to the normal log title.

See also

[If Prev Action Failed Action](#)