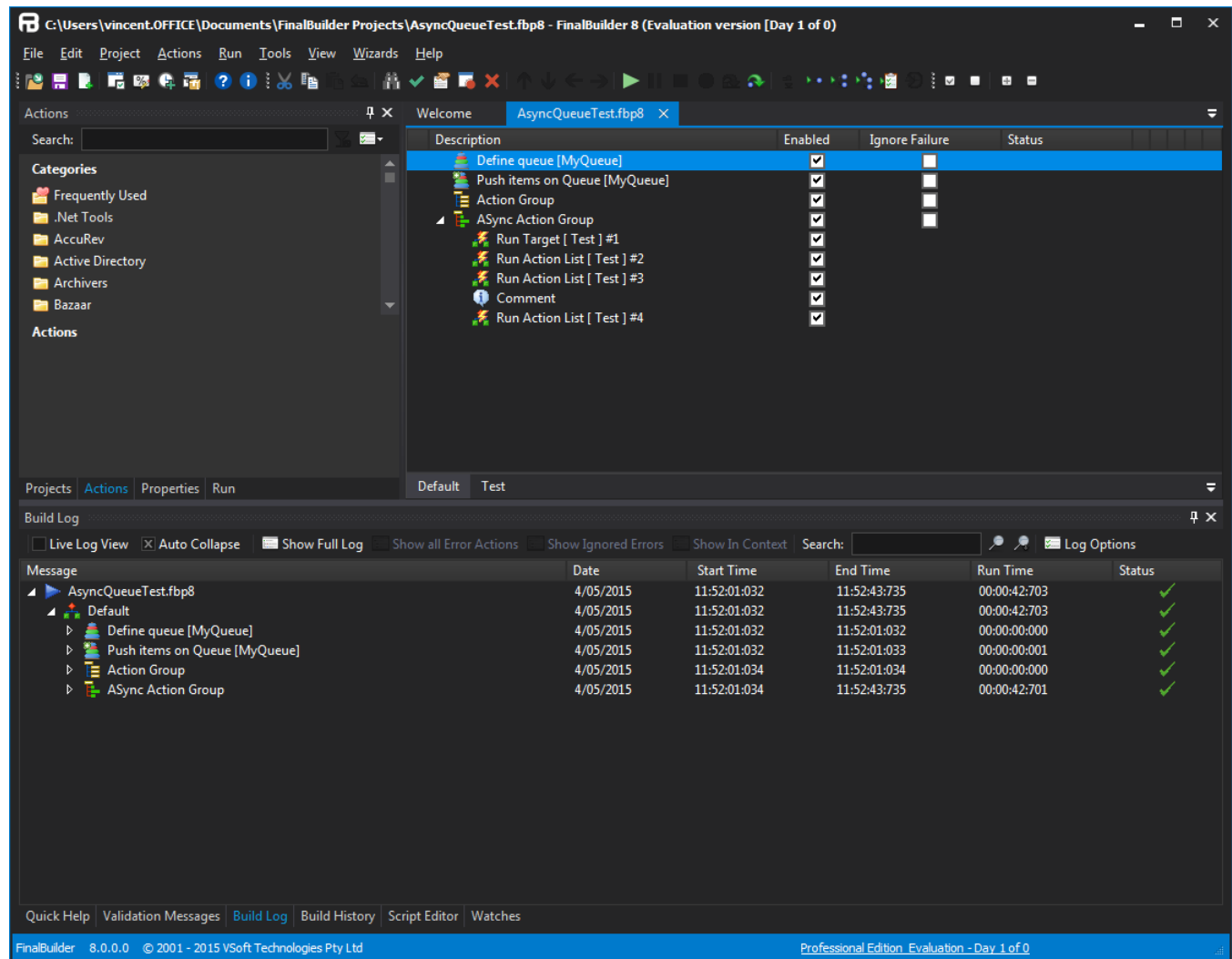


IDE Design Mode

FinalBuilder's Design mode consists of three main sections:



Project / Action Types / Action Inspector

This section contains four tabs:

- **Project:** Contains a tree of the action lists, global script and variables in your project.
- **Actions:** Lets you add new actions to your project.
- **Properties:** Lets you edit any property of any action, as an alternative to using the properties dialog.
- **Run Tab:** Shows progress and statistics while projects are running.

Action Lists

This is where you create and edit the actions of your project. There are two built-in action lists, Main and OnFailure. You can also add extra [Working with the Action Types Panel](#).

Log/Script Editor

There are several tabs in the bottom section, but the most relevant ones during design of your project are the [Quick Help](#).